

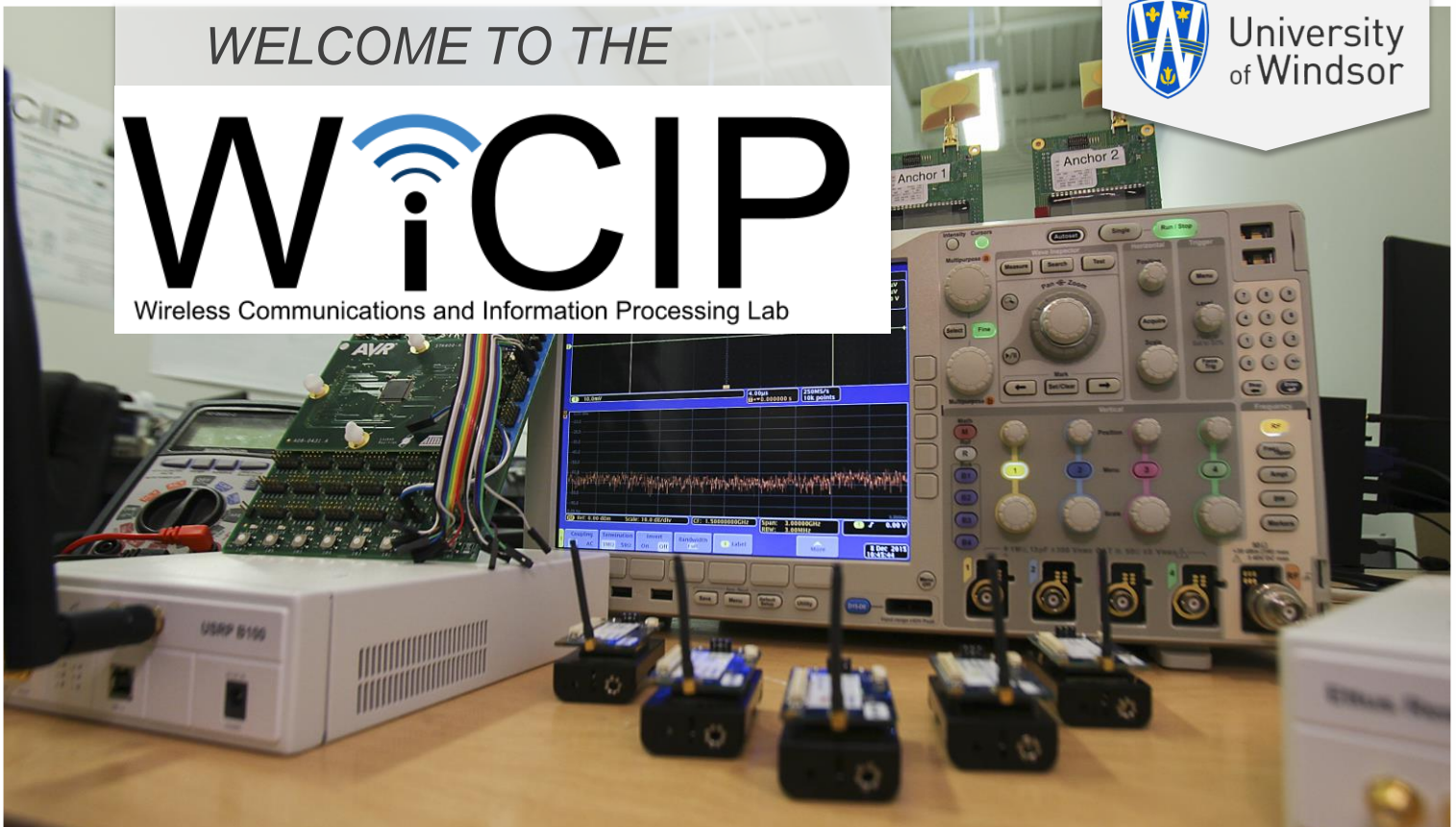
WELCOME TO THE

# WiCIP

Wireless Communications and Information Processing Lab



University  
of Windsor



## Wireless Communications and Information Processing Research Laboratory at the University of Windsor:

- Focuses on 3 major research areas of wireless and computer networking: (1) Internet of Things (IoT), Machine to Machine (M2M), Sensor Networks, and Ultra-Wide Band precise indoor positioning; (2) Vehicle to Vehicle (V2V) and Vehicle to Infrastructure (V2I) communications, connected vehicles; (3) Wireless networks, mobile networks, and network security.
- Develops real-time, reliable and energy efficient protocols for mobile and wireless networks designed for smart systems communications, smart grids, robotics and industrial networking applications.
- Innovative and transformative research project of WiCIP are funded by NSERC, FedDeV, CFI, and Communication Research Centre of Canada as well as industrial partners.
- Equipped with Network Analyzers, sensor network testbed, DSRC communication systems, vector signal analyzer, state-of-the-art wireless communication modules and systems.
- Know how in network simulation with Omnet++, NS2/3, and Matlab, simulation experience with mobility models and networks.
- Rapid prototyping of network gateways, communication protocols, wireless communications systems up to 15 thousand nodes. Rapid prototyping of protocol with real-time operating systems and off-the-shelf hardware and systems.

To learn more about how you can get involved with WiCIP Research Lab., contact Dr. Kemal Tepe of the Department of Electrical and Computer Engineering by email at [ktepe@uwindsor.ca](mailto:ktepe@uwindsor.ca) or call 519.253.3000 ext. 3426.