

Your Work at UWindsor

One-Minute Elevator Pitches



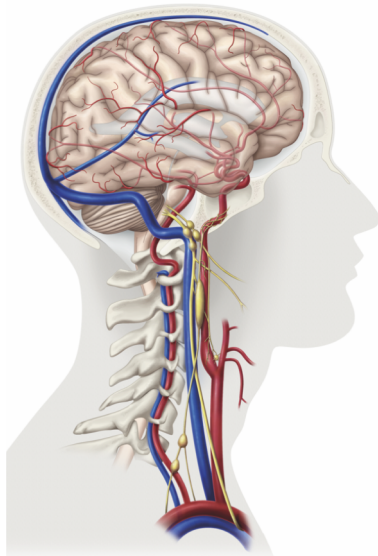
August 8, 2018

Anthony Bain



Integrative cardiovascular physiologist

Cerebrovascular function



Exercise

Heat stress

Competitive apnea

High altitude

Hypertension

Sleep

Vascular endothelial function



Mohamed Belalia, PhD
Department of Mathematics and Statistics

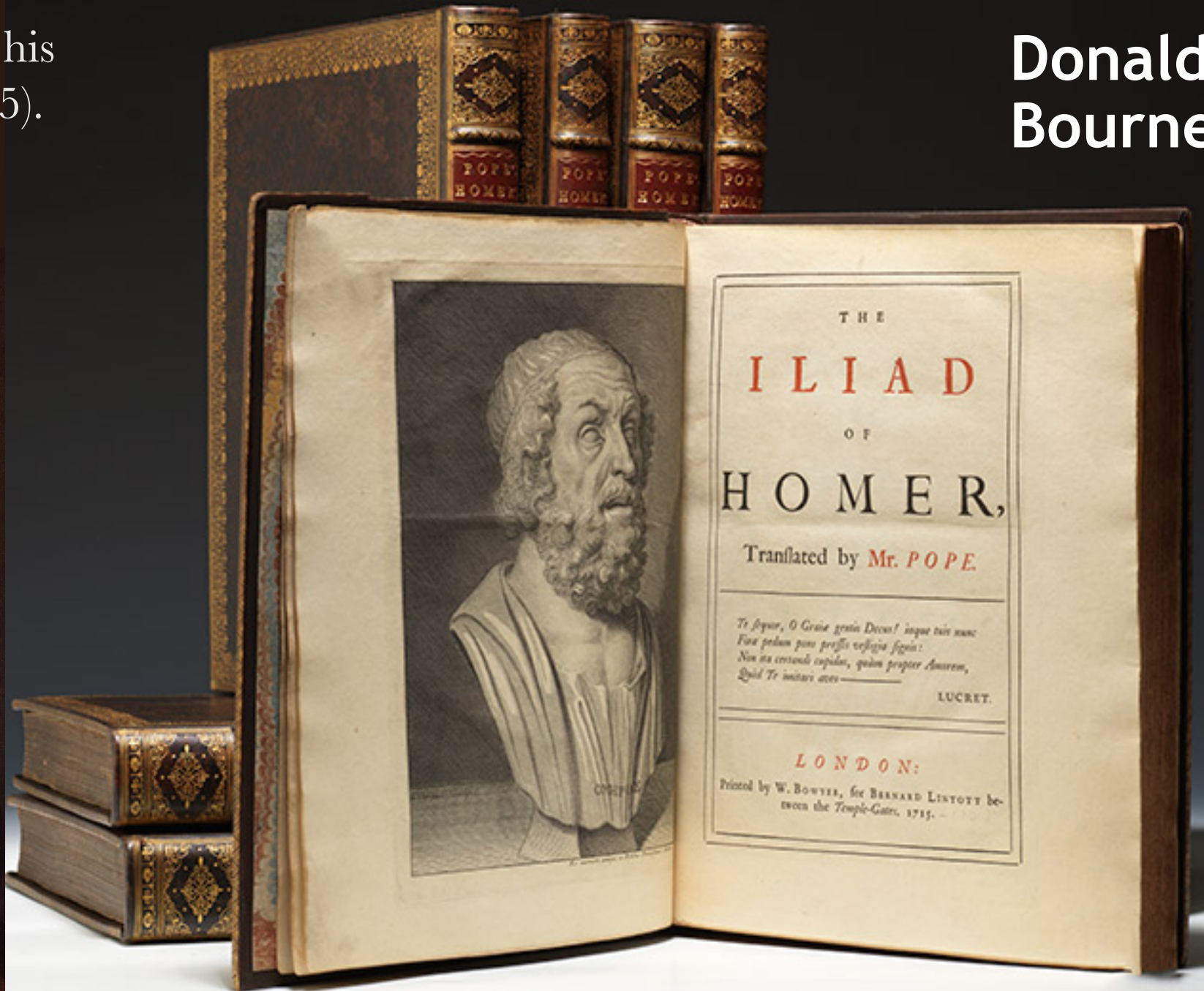
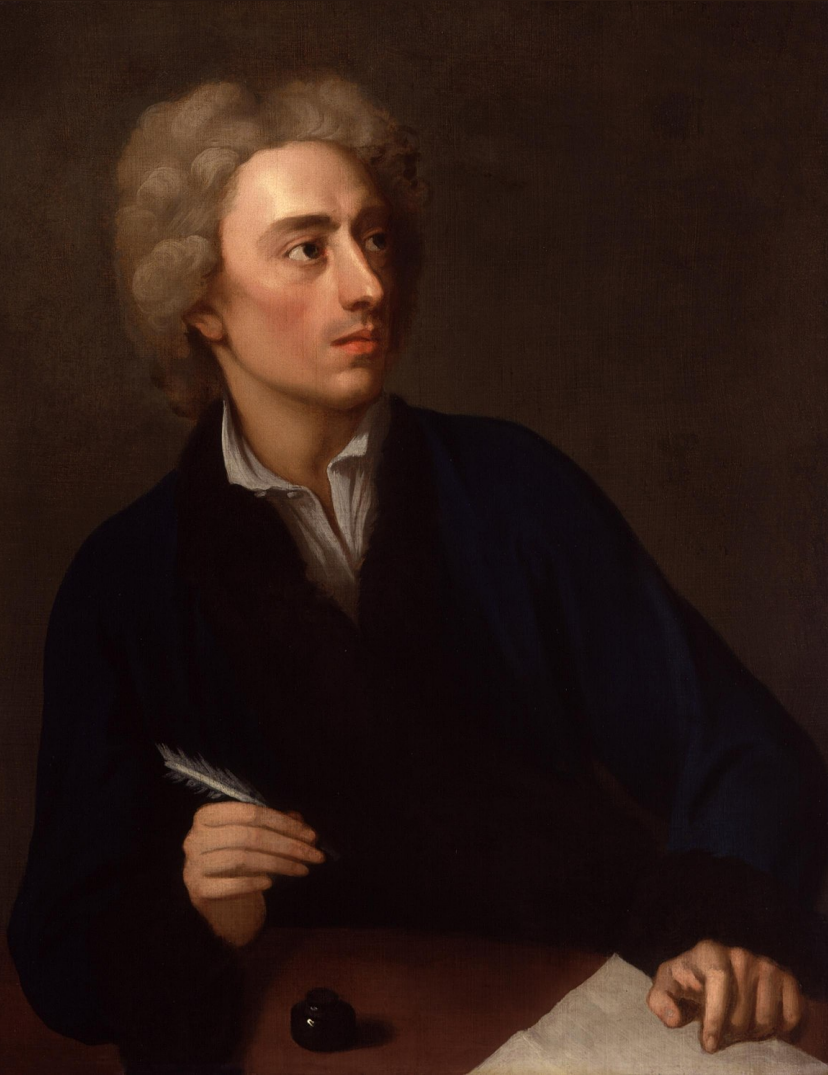
Research interests:

1. Dependence modeling
2. High dimensional data analytics
3. Nonparametric statistics
4. Statistical genetics



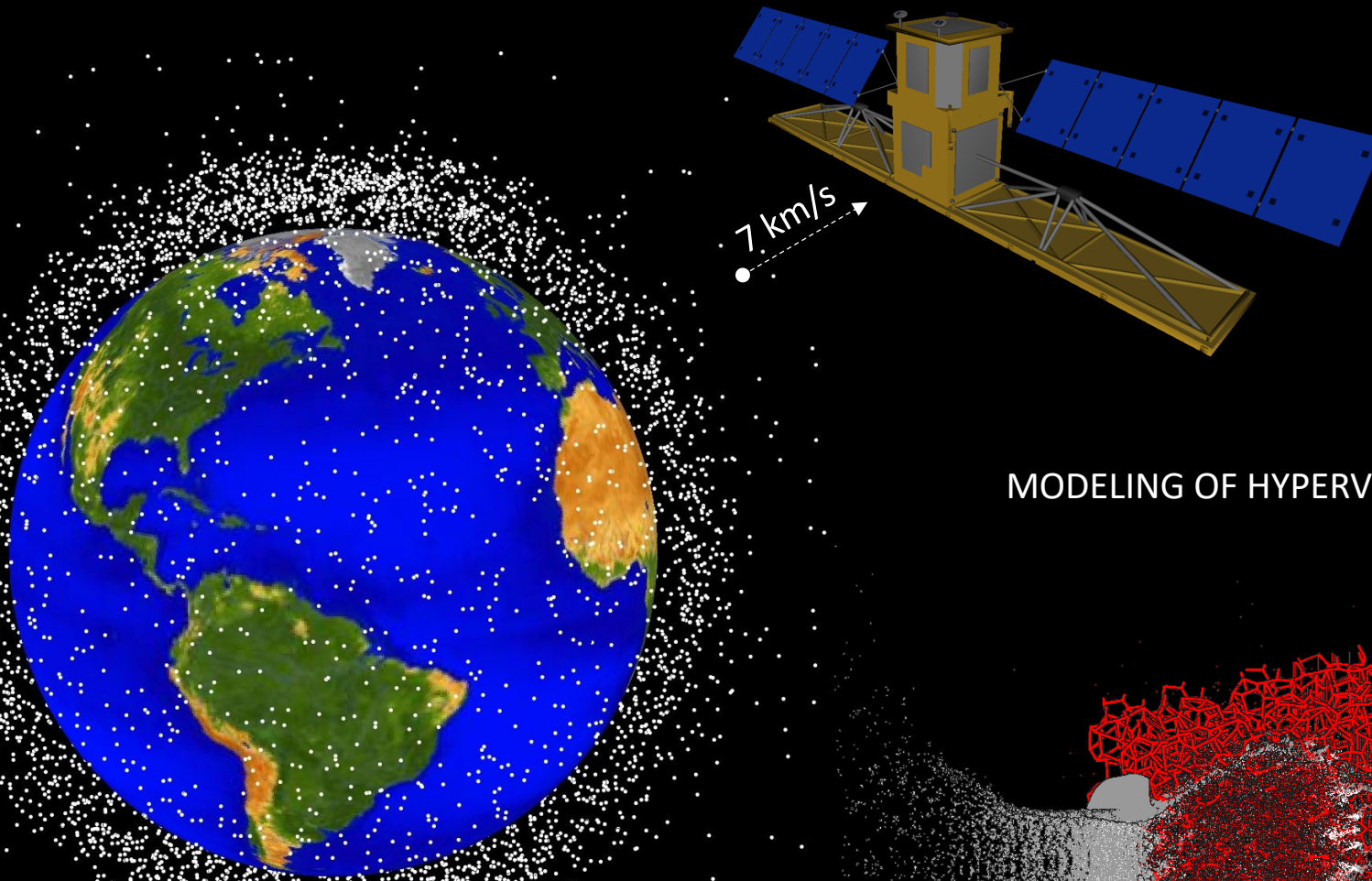
Alexander Pope, his Footnotes, his Texts, and his Verse (1709–1745).

Donald Bourne

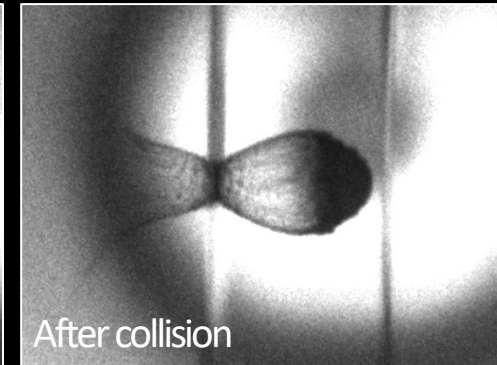
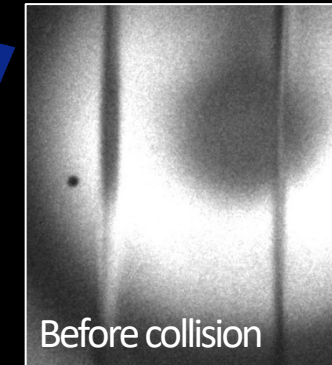


Alexander Pope by Michael Dahl (1727). National Portrait Gallery, London, UK (www.npg.co.uk). Pope's *Iliad*, First Edition (1715) in Quarto. Bauman Rare Books (www.baumanrarebooks.com).

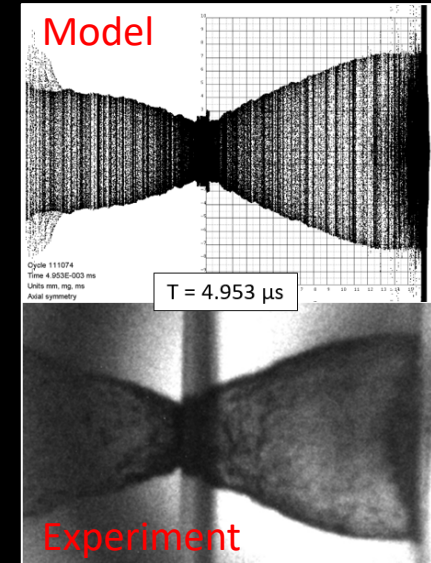
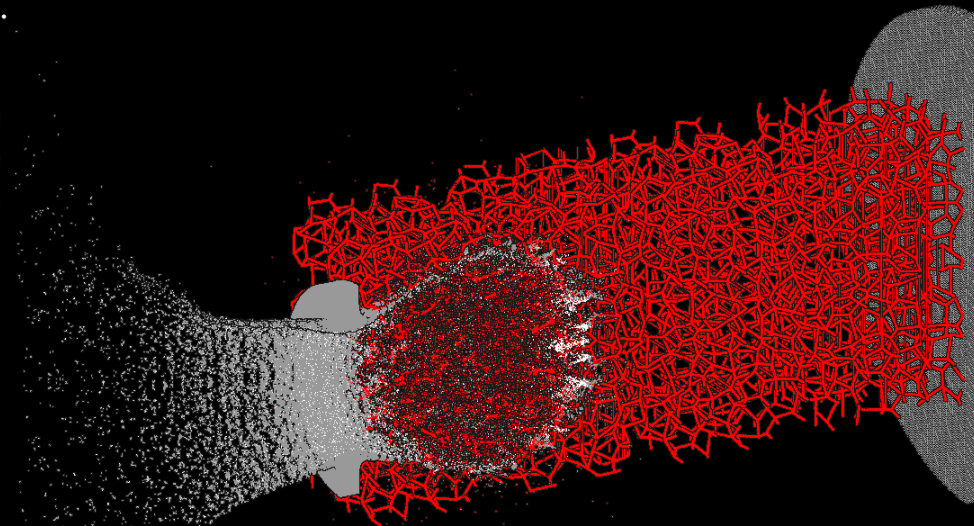
Dr. Alex Cherniaev (MAME): Impact Mechanics, Advanced Materials



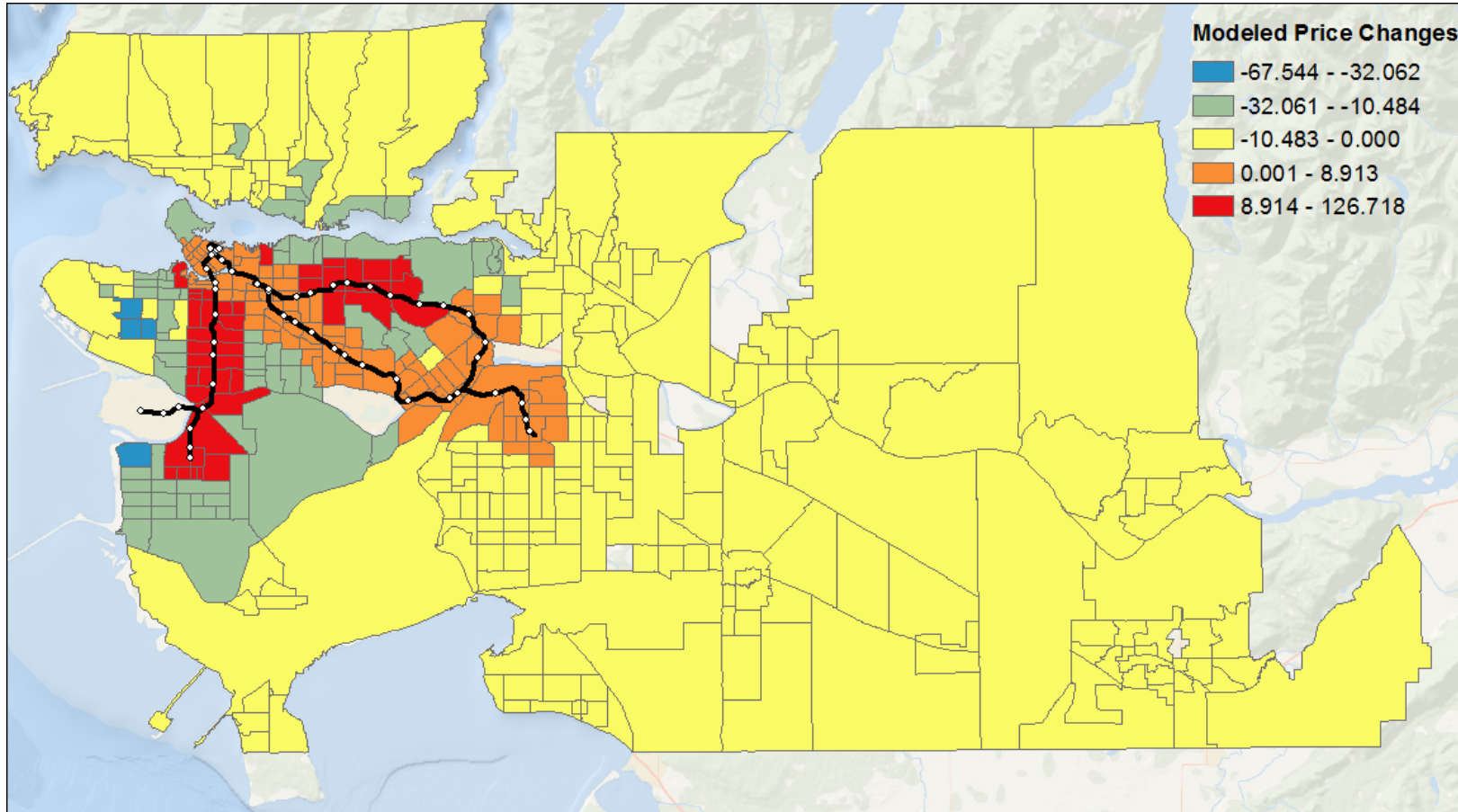
HYPERVELOCITY IMPACT EXPERIMENTS



MODELING OF HYPERVELOCITY IMPACT ON ADVANCED MATERIALS



Commuting and Residential Location Choice



Chernoff and Craig (2018)

Edward Cruz, RN, PhD



- Health Workforce Migration
 - Internationally Educated Nurses
- Immigrant Health
- Interprofessional Education and Collaboration
- Nursing Education

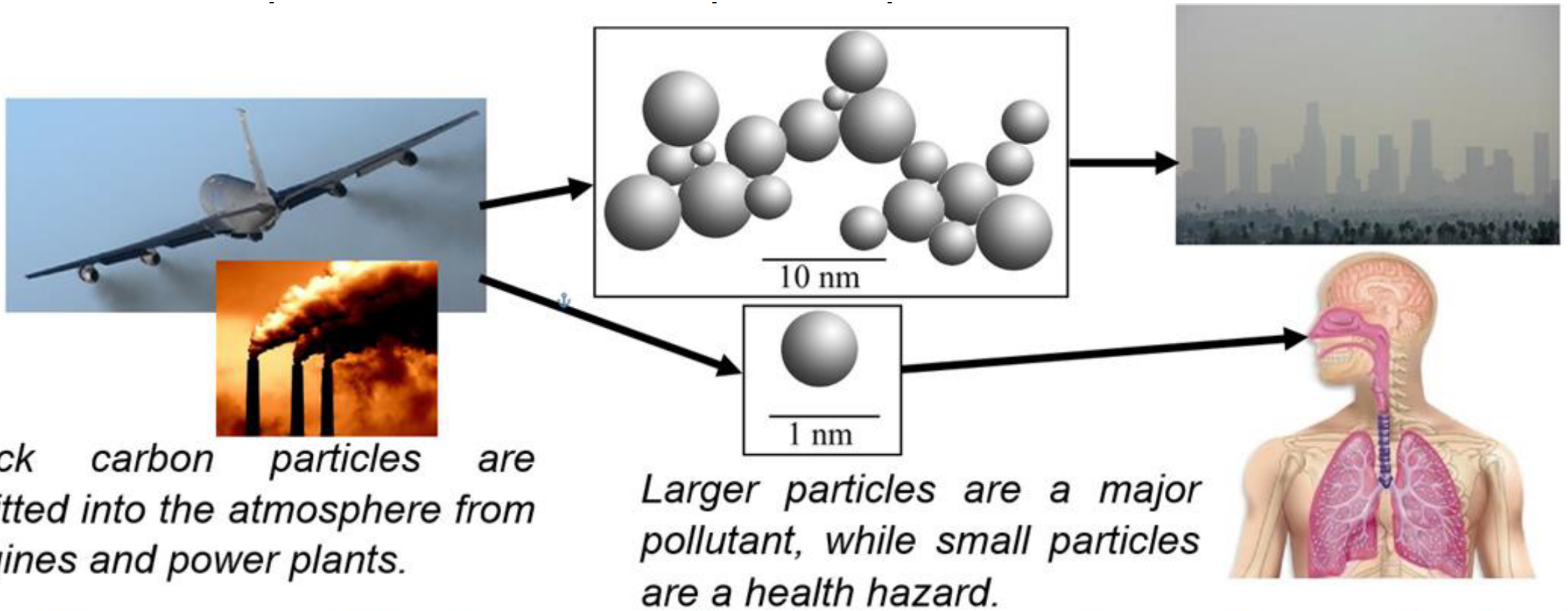
To Err is Human

To reduce risk is divine

-adapted from A. Pope



Susan Dennison RN, MScN, CPPS
Faculty of Nursing, AAS II Clinical Learning Specialist



Nickolas Eaves

Environmental Challenges Do Not Respect Legal Boundaries



Patricia Galvão Ferreira, Windsor Law, Summer 2018

Max Ganzin

Entrepreneurs' Prospective Sensemaking: Path of a Magical Realist

How do entrepreneurs cope with risk and uncertainty?

How do entrepreneurs project successful future?

Values, Worldviews

Different Types of Rationalities

- **Motivation for Entrepreneurs:** money and meaning
- ✓ Not just Entrepreneurs



Odette School
of Business
University of Windsor

Ashley Glassburn Falzetti

- Women's and Gender Studies

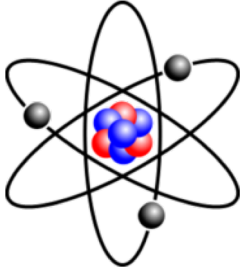
James Gravelle - Volleyball

What are we trying to achieve in the next five years?

- 100% graduation rate
- Win our first OUA championship in program history
- Win our first IG Champions Cup for on-court and community achievement
- Turn out some great young men
- I plan to be Team Leader for Team Canada Men's Volleyball at the next Universiade in Naples, July 2019

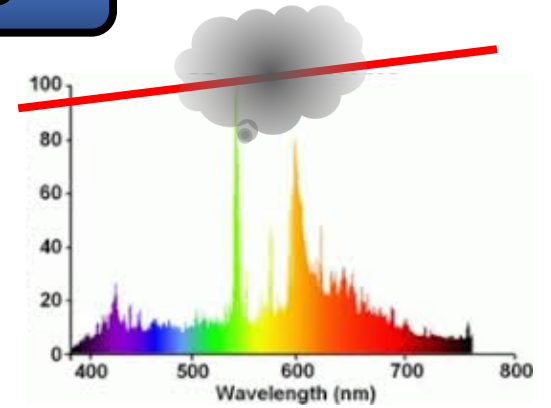


Attosecond Science and Remote Sensing



Attoscience measures electronic motion on an attosecond timescale

Remote sensing detects chemical and biological samples

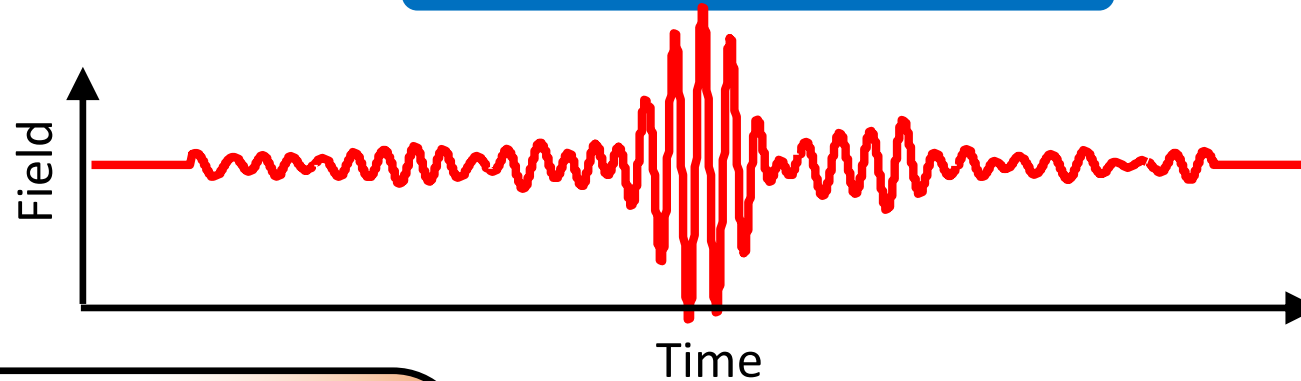


Single-shot application for light monitoring by optical nonlinearity



SALMON

Measures laser waveform



TJ Hammond
Dept of Physics

Time Domain

Physics

- Induced polarization
- Transient electronic states
- Relaxation times

Engineering

- PHz technologies
- Materials science
- Nanophotonics

Frequency Domain

Measures spectra

Air/water: pollutants

Interfaces: adsorption

Breath/urine/skin: cancers

Chemistry

Biology

Nick Hector

“Digital cinéma-vérité”

Developing creative and technological strategies
for independent and emerging documentary filmmakers.



Practice Ready...

- Balance of academic and practical skills
- Connections into the community
- Collection development that supports life-long skills
- Accessible and inviting resources (website, etc)

Meris James

Research Interests

- Adult attachment in relationships
- Recovery from Substance Use Disorder (SUD)
- Gratitude, prosocial behavior, self-efficacy
- Personal growth & development



Research Questions

- Which PPI's are most effective at facilitating change?
- Why are gratitude & prosocial behavior important?
- Does attachment help or hinder recovery process?
- How do people change after entering recovery?



Onawa LaBelle

Psychology Department
University of Windsor



REBECCA MAJOR

- Metis and non-status Mi'kmaq person
- Current research: Indigenous Policy learning and change in Canada
- Other research: Identity
- Other research: Indigenous ways of knowing and understanding



Alice Nelson



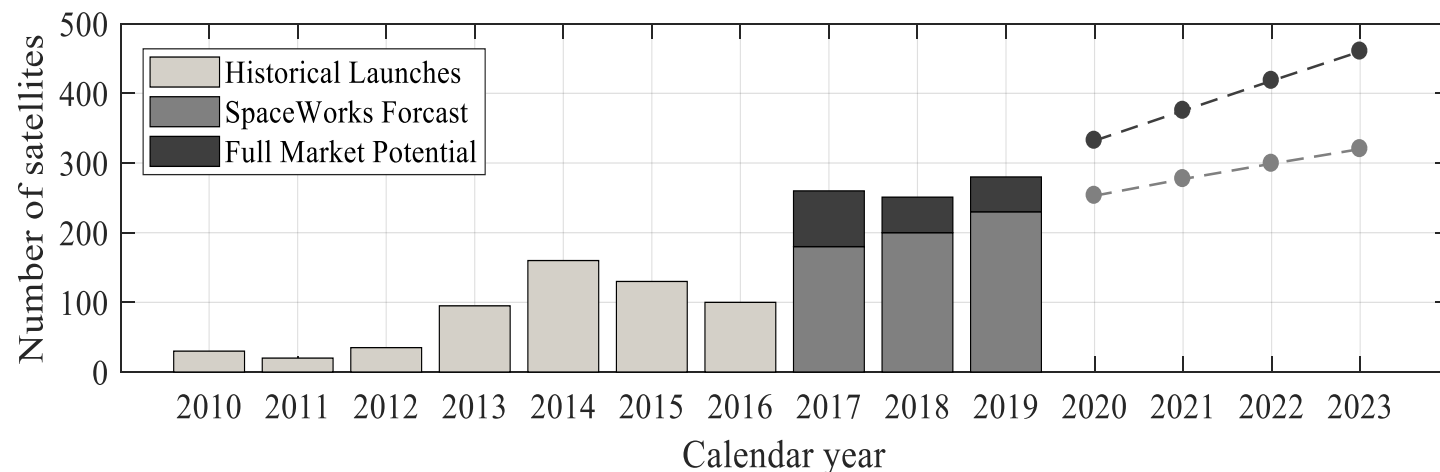


Elevator Pitch

One Minute
Summer 2018

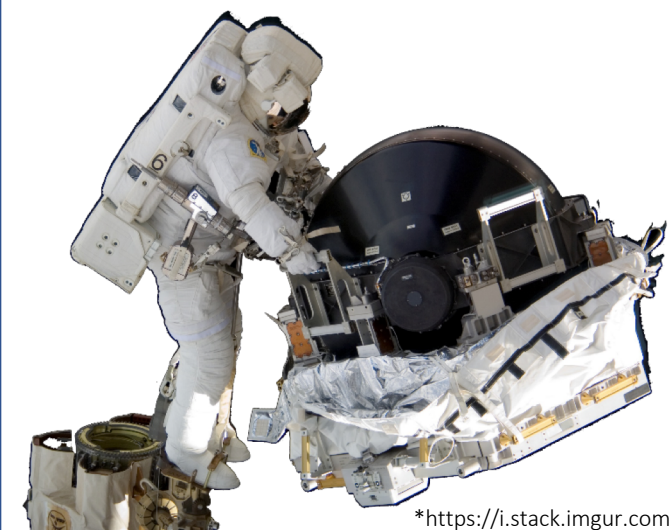
Dr. Afshin Rahimi

Assistant Professor
Aerospace Engineering

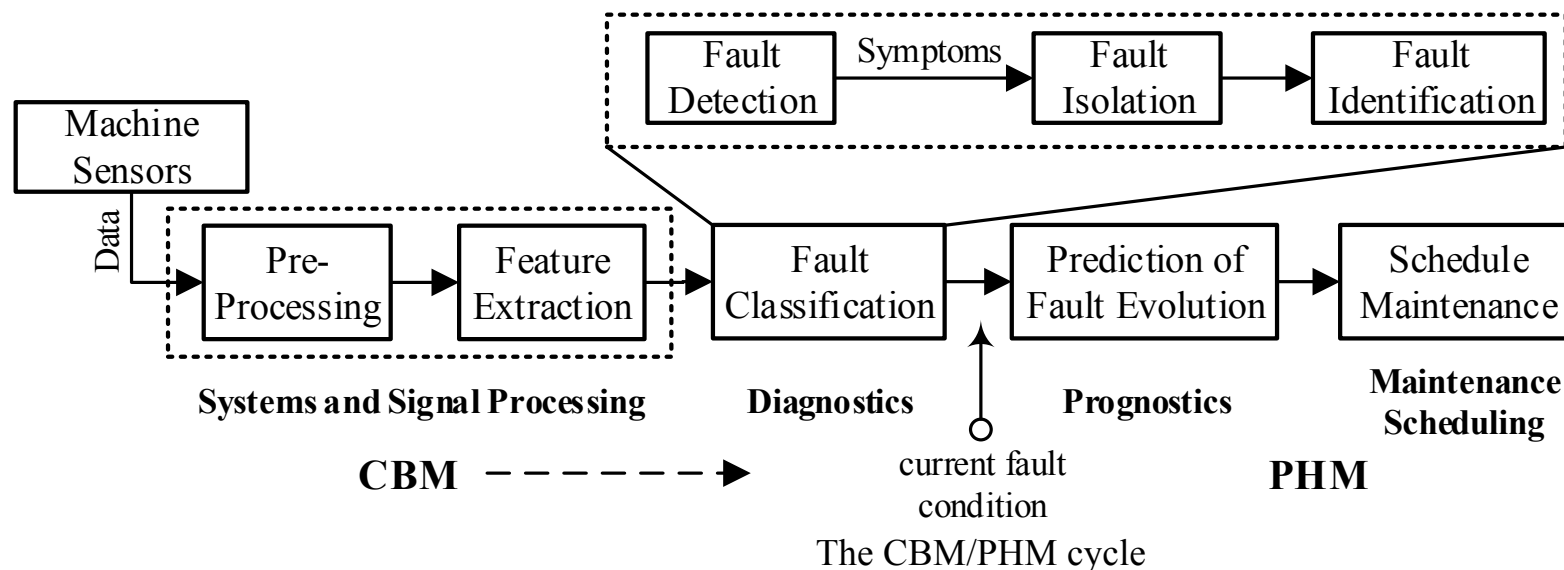


SpaceWorks small satellites launch historical, current, and future projections data

The increasing demand for smaller and more complex units, calls for more intelligent system health monitoring frameworks

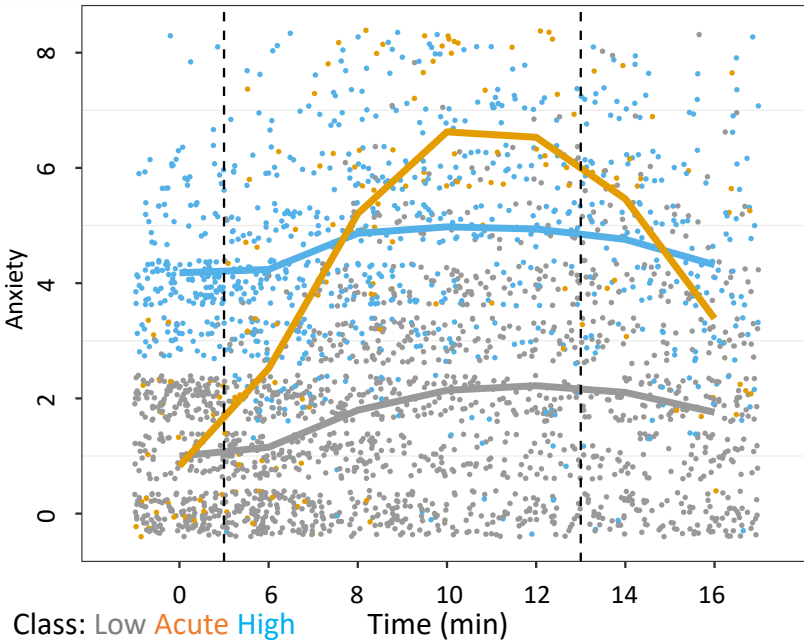


*<https://i.stack.imgur.com>

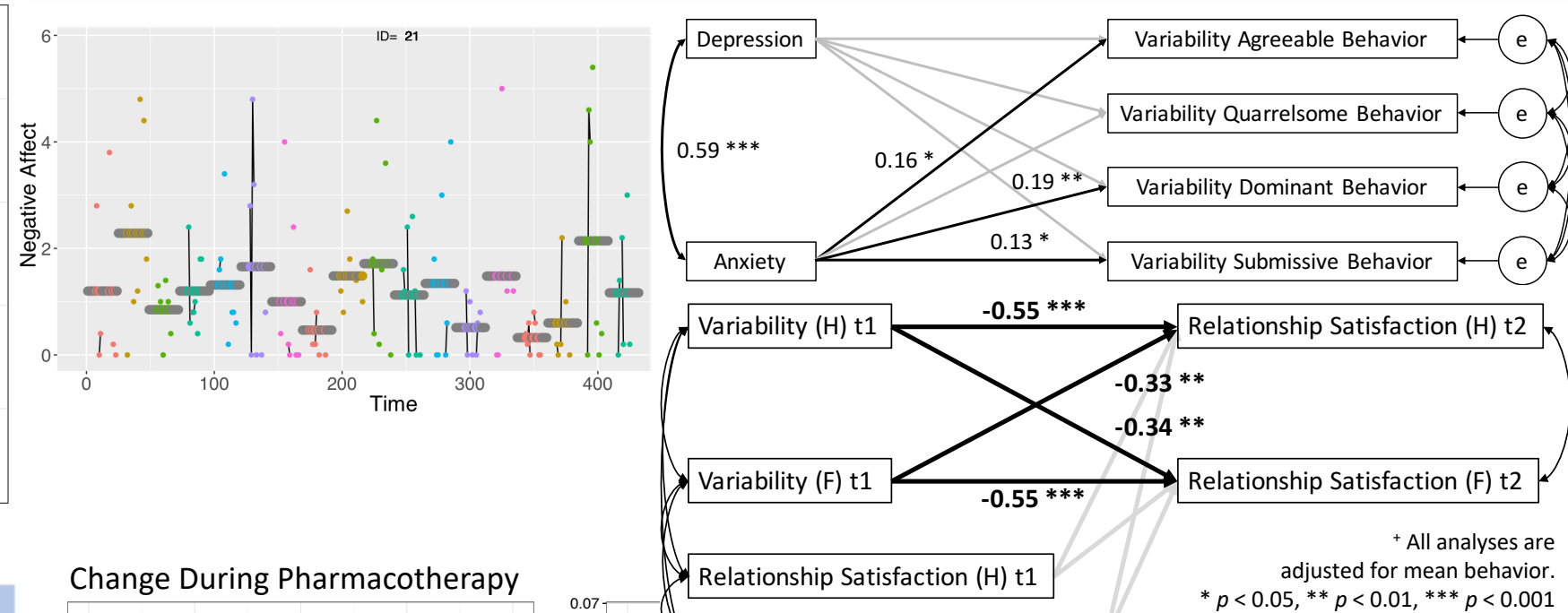


Affective and Interpersonal Mechanisms in Pediatric Mental Health

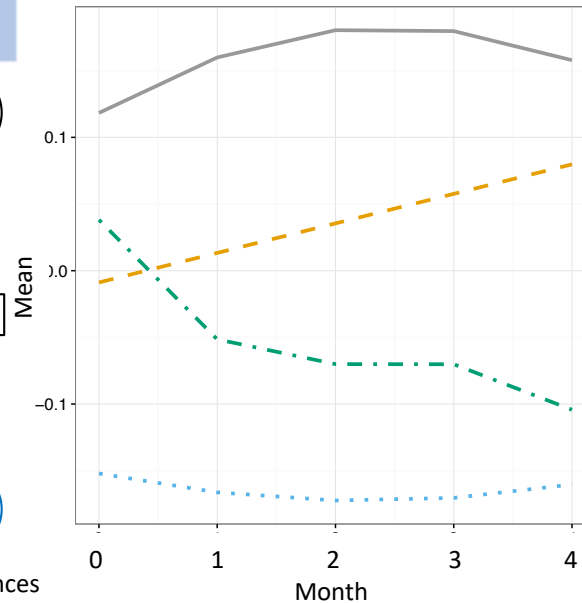
Response to Laboratory Stressor



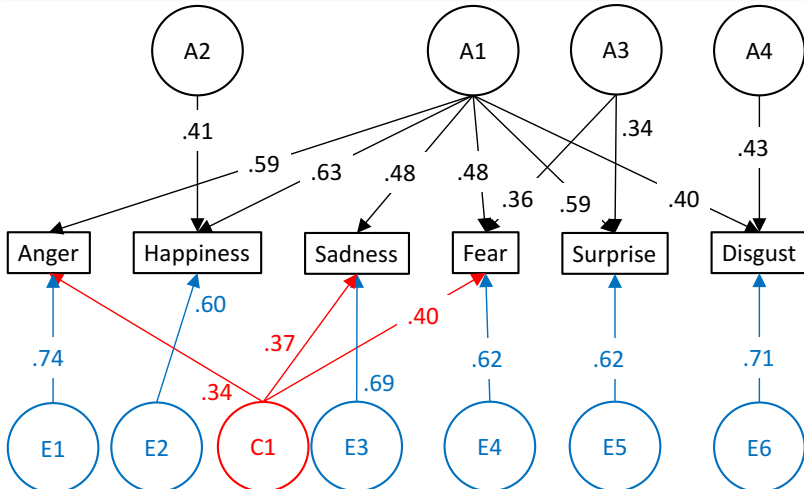
In Vivo Anxiotypic Dynamics of Affect, Interpersonal Behavior and Cognition



Change During Pharmacotherapy



Etiology of Emotion Recognition



Note. Genetic (A) and Common (C) and Unique (E) Environmental Influences

References

(counter-clockwise from top left)

Rappaport et al. (2017)

J. Am. Acad. Child Adolesc. Psychiatry

Rappaport et al. (in press)

J. Am. Acad. Child Adolesc. Psychiatry

Rappaport et al. (in press)

J. Psychiatry Neurosci.

Sadikaj et al. (2015) JPSP

Rappaport et al. (2014)

J. Couns. Psychol.

Lance M. Rappaport, Ph.D.

Email: Lmr@uwindor.ca

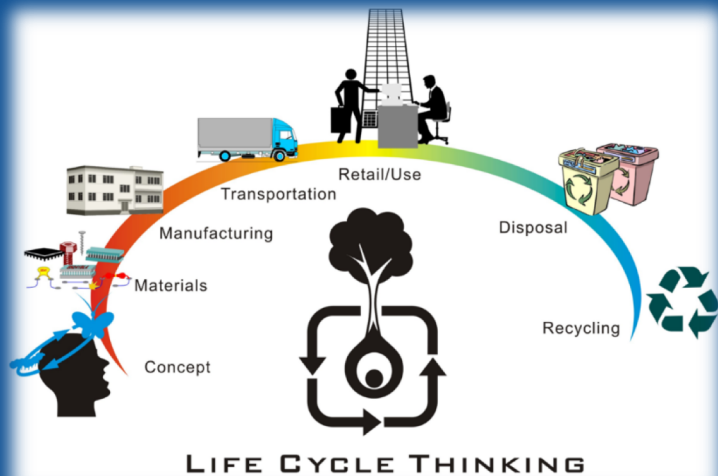


Roger Reka

Science Data Librarian

roger.reka@uwindSOR.ca

New Faculty Orientation: Summer 2018





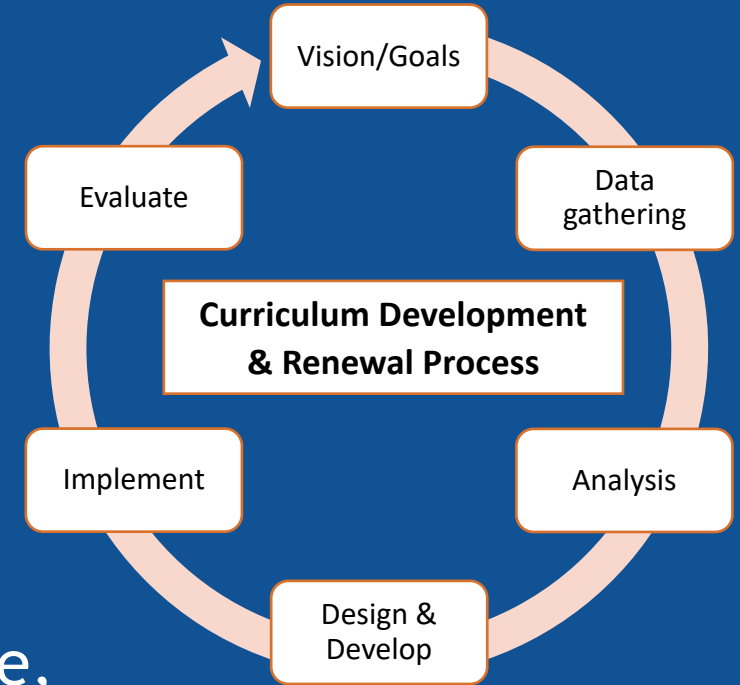
ANTIGONISH 2.0

Media Literacy | Community | Citizenship

DR. BONNIE STEWART
Faculty of Education

Christie Stewart - Learning Specialist - Centre for Teaching and Learning

- Curriculum Development and Mapping
 - Learning outcomes, curriculum development and renewal
 - Support
 - Consult
 - Facilitate
- Impacts
 - *Students*: Ongoing improvement of student experience, student engagement and educational quality
 - *Faculty*: Engage faculty in collegial dialogue about teaching, learning and curriculum
 - New faculty - where do my courses fit in?
- Collaborators - all faculty/staff, including you!



Adapted from University of
Saskatchewan GMCTL, University of
Dalhousie CTL

Analogical Reasoning

- Use in Scientific Discourse
- Analogical Models and Metaphors
- Experimental Design
- Potential to Mislead

Indigenous & Feminist Philosophy

- Allies and Allyship
- Indigenous Knowledge
- College Preparation Programs (ISHIP)



Summer 2017

Andrea Sullivan-Clarke, Philosophy
President's Indigenous Peoples Scholar
Andrea.Clarke@uwindor.ca



Tess Sheldon, Faculty of Law

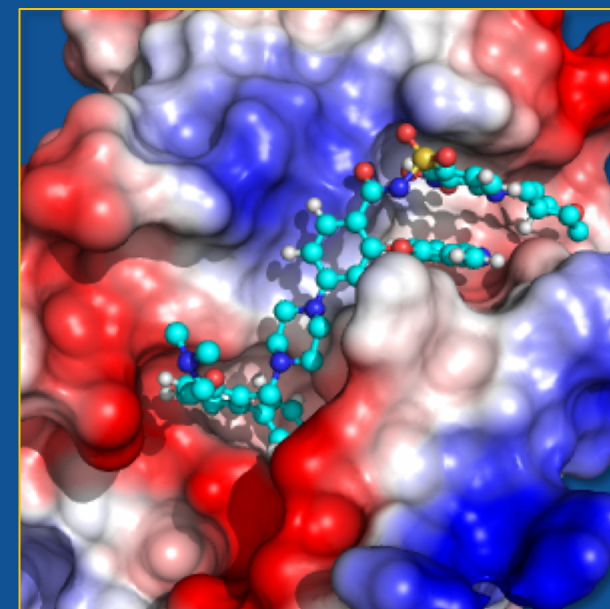
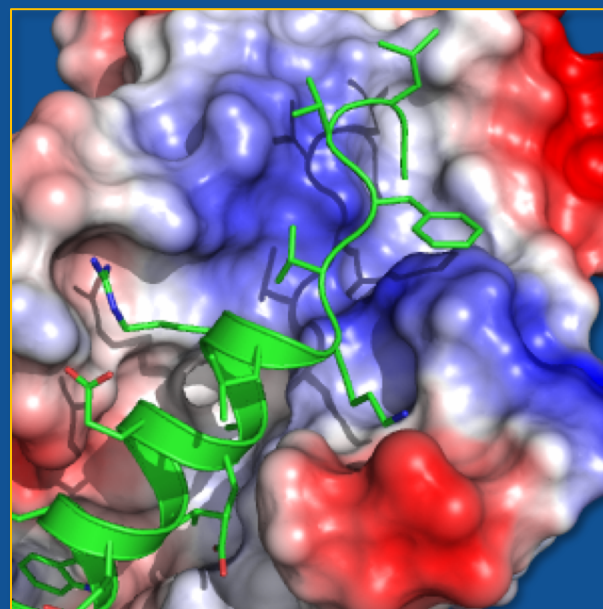
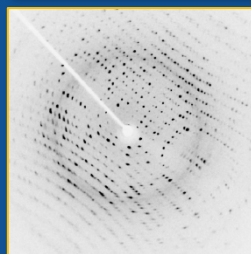
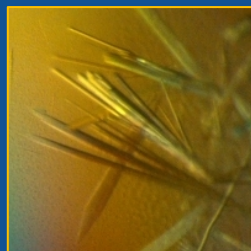
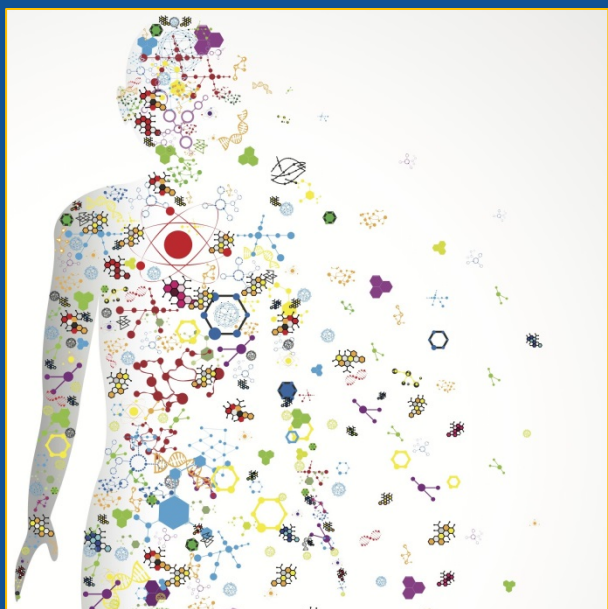
Can the law do what it needs to do
to make sure that communities have
what they need to be **healthy**?

Wait! What does “healthy” even mean to **people with disabilities**?

....especially people with mental health issues/disabilities or lived
experience of the psychiatric system?



Understand Human Health at Atomic Level Using Structural Biology



Yufeng Tong, Department of Chemistry and Biochemistry

Summer 2018



Seismic Base Isolation

