



NEW FACULTY ORIENTATION

Your Campus Network



University
of Windsor

Welcome to Windsor!

Dr. Douglas Kneale

Provost and Vice-President, Academic

Building and Navigating Your Campus Network

Erika Kustra, Director, Teaching and Learning Development, Centre
for Teaching and Learning

Heather Pratt, Executive Director, Research and Development,
Office of Research and Innovation Services

Bev Hamilton, Academic Initiatives Officer
Office of the Provost

Opening Challenge

For each of the challenges described on your chart...

1. Find a service or department who can help you.
2. If they agree that they can help you, get them to stamp your chart.
3. Pick up their info sheet!

Tip: Use the posted Campus Network Maps if you get stuck! There's also a description of each unit's services in your binder.

Finding Your Campus Network

Your Campus Network: Problem Solving

At your tables:

- Review each problem
 - Identify questions and ask for clarifications
 - Identify challenges
 - Using Campus Network Services list and online A-Z Directory, identify who you might contact for advice or help
- We'll debrief them as a group

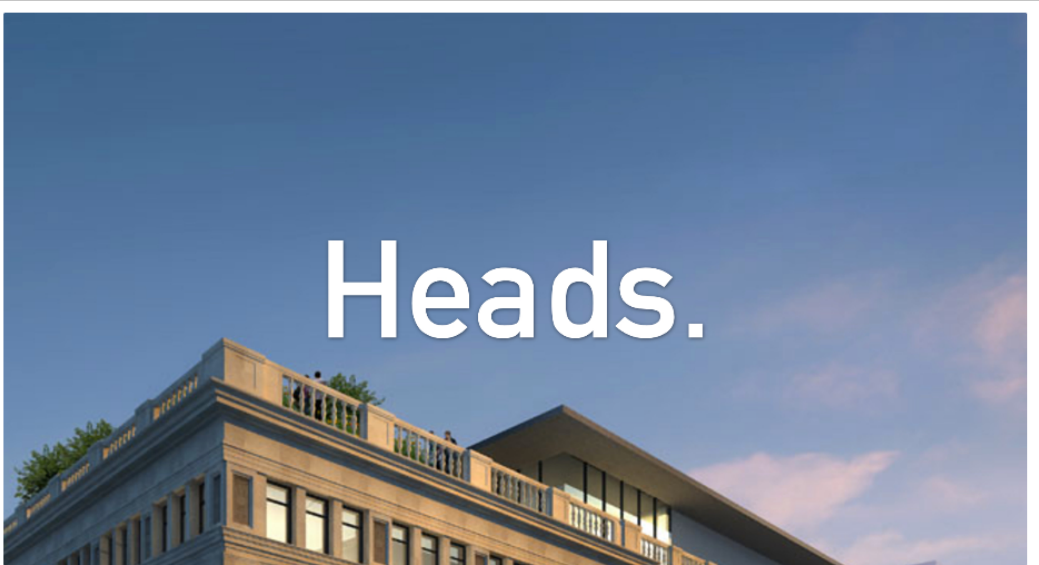
Starting Points

Your Campus
Network: Guide
to Services
Binder, Orange
Tab, p. 3

Your Campus Network: Guide to Services

Service	Description
Aboriginal Education Centre	Provides support to self-identified Aboriginal students to reach their highest potential in a culturally supportive atmosphere
Academic Advising Team, Student Success and Leadership and Leadership Centre	Provides academic advising related to course and program changes, assessment of academic progress, academic procedures, and the development of plans to deal with academic difficulties
Academic Integrity and Student Conduct Officer	Promotes a culture of academic integrity and respect for others, assuming an administrative role when academic (or non-academic) misconduct is alleged to have occurred
Animal Care Committee	Ensures that all research with animals is conducted in accordance with the highest ethical and humane standards and that the animals, the public, the researchers, and the University of Windsor are all protected from harm
Blackboard Learning Management System Team	provides support for the ongoing functioning of the University of Windsor's Learning Management System an online application to support teaching and learning activities, including training, end-user support, technical support, review of current pedagogical and technical research, and online self-help.
Campus Community Police	Work in partnership with the University community to provide a safe and secure environment to all students, staff, faculty and visitors by providing a 24-hour presence on our campus to respond to routine and emergency calls for service
Career and Employment Services	Offers a variety of programs, services, and resources that can enhance student's university experiences and contribute to their employment and career goals
Centre for Teaching and Learning	Works with members of the campus community to enhance the practice, culture, and scholarship of teaching and learning; to support the integration of effective teaching practices and technologies that extend and enrich learning; and to support to instructors using the University's Learning Management System, Blackboard Learn
Chemical Control Centre	Promotes the safe use of hazardous materials by the University community through controlled acquisition, distribution, disposal, and training services
EPICentre	The Entrepreneurship Practice and Innovation Centre (EPICentre) is a campus-wide initiative created to encourage entrepreneurship on campus, and support students and graduates interested in launching their own businesses
Faculty of Graduate Studies	Brings together a community of scholars and researchers committed to supporting graduate education and fostering student development

<http://www.uwindsor.ca/aauheads/resources/>



Heads.

Budgets & Finance

Employment & HR

Committees & Strategies

Facilities & Maintenance

Outreach & Recruitment

Research & Innovation

Student Services

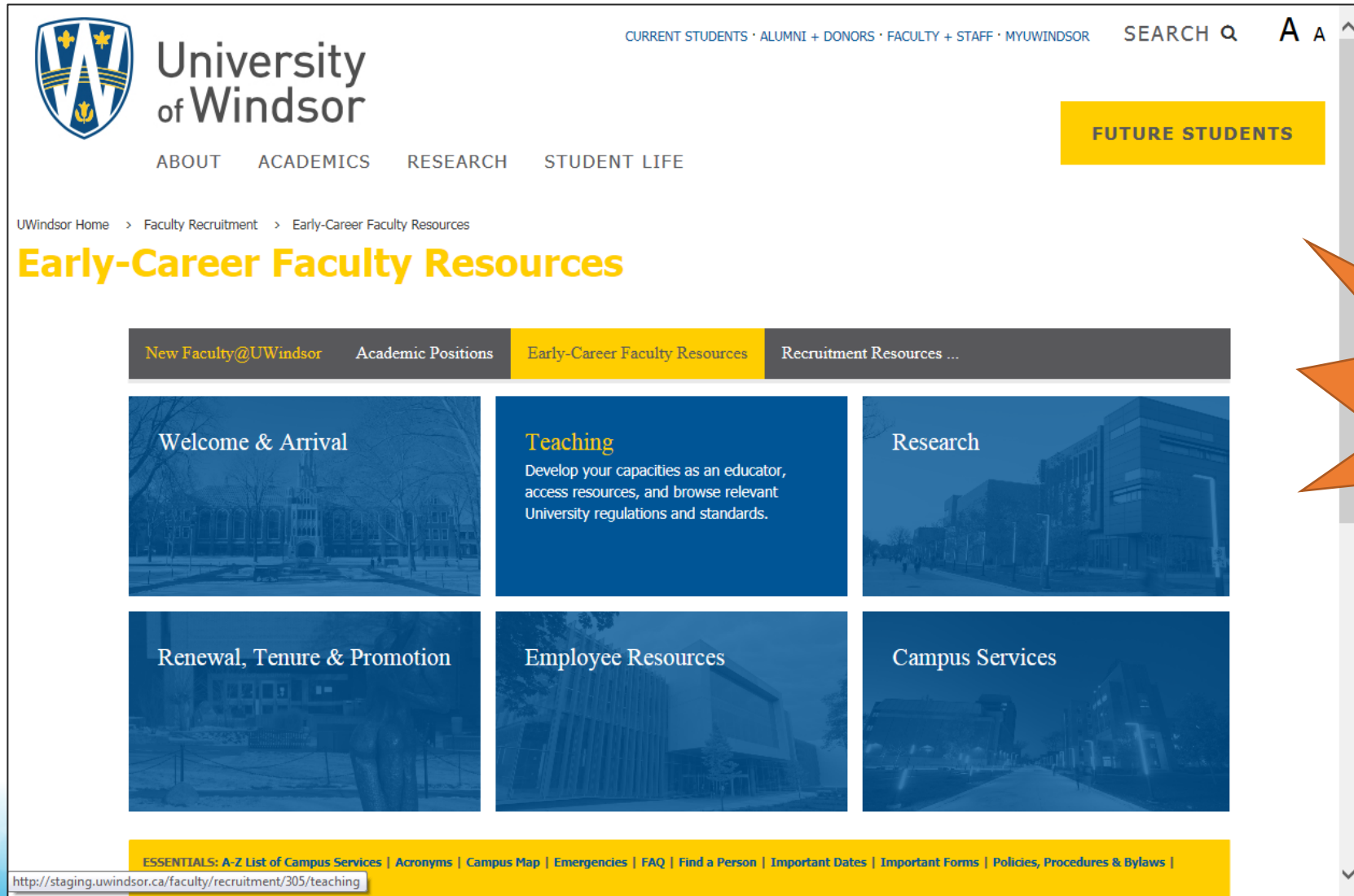
Teaching & Programs

NEW: Resources from AAU Heads Orientation 2017

[ESSENTIALS: A-Z List of Campus Services](#) | [Acronyms](#) | [Campus Map](#) | [Emergencies](#) | [FAQ](#) | [Find a Person](#) | [Important Dates](#) | [Important Forms](#) | [Policies, Procedures & Bylaws](#) | [Workshops & Campus Events](#)

ESSENTIALS: [A-Z List of Campus Services](#) | [Acronyms](#)
| [Important Dates](#) | [Important Forms](#) | [Policies, Pro](#)

Coming Soon: Searchable Online Resources for New & Early-Career Faculty



University of Windsor

CURRENT STUDENTS · ALUMNI + DONORS · FACULTY + STAFF · MYUWINDSOR SEARCH A A ^

ABOUT ACADEMICS RESEARCH STUDENT LIFE

UWindsor Home > Faculty Recruitment > Early-Career Faculty Resources

Early-Career Faculty Resources

New Faculty@UWindsor Academic Positions **Early-Career Faculty Resources** Recruitment Resources ...

Welcome & Arrival

Teaching
Develop your capacities as an educator, access resources, and browse relevant University regulations and standards.

Research

Renewal, Tenure & Promotion

Employee Resources

Campus Services

ESSENTIALS: A-Z List of Campus Services | Acronyms | Campus Map | Emergencies | FAQ | Find a Person | Important Dates | Important Forms | Policies, Procedures & Bylaws |

<http://staging.uwindsor.ca/faculty/recruitment/305/teaching>

**COMING
SOON!**

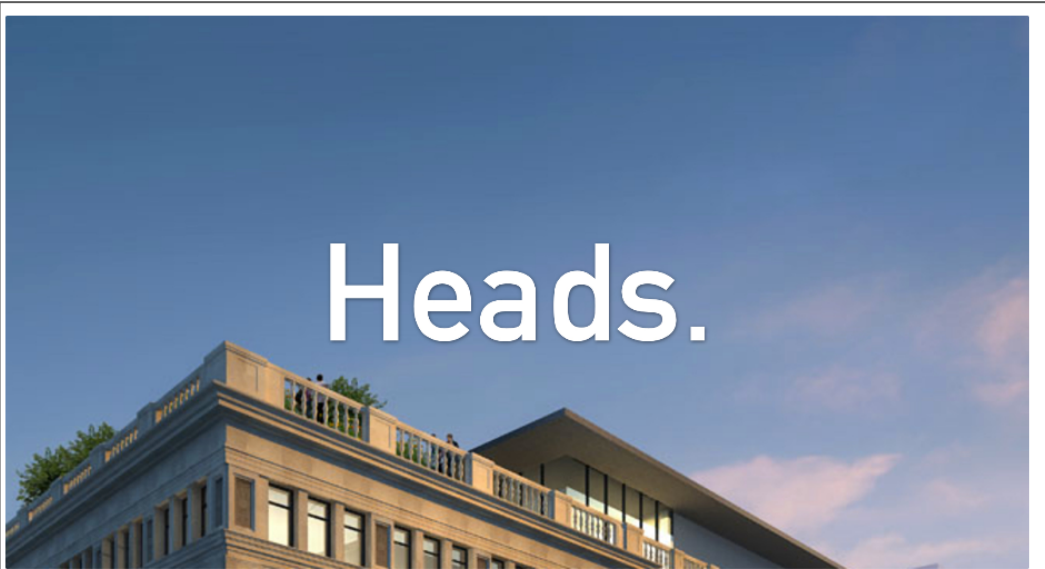
Starting Points

Your Campus Network: Guide to Services Binder Section 1

Your Campus Network: Guide to Services

Service	Description
Aboriginal Education Centre	Provides support to self-identified Aboriginal students to reach their highest potential in a culturally supportive atmosphere
Academic Advising Team, Student Success and Leadership and Leadership Centre	Provides academic advising related to course and program changes, assessment of academic progress, academic procedures, and the development of plans to deal with academic difficulties
Academic Integrity and Student Conduct Officer	Promotes a culture of academic integrity and respect for others, assuming an administrative role when academic (or non-academic) misconduct is alleged to have occurred
Animal Care Committee	Ensures that all research with animals is conducted in accordance with the highest ethical and humane standards and that the animals, the public, the researchers, and the University of Windsor are all protected from harm
Blackboard Learn Learning Management System Team	provides support for the ongoing functioning of the University of Windsor's Learning Management System an online application to support teaching and learning activities, including training, end-user support, technical support, review of current pedagogical and technical research, and online self-help.
Campus Community Police	Work in partnership with the University community to provide a safe and secure environment to all students, staff, faculty and visitors by providing a 24-hour presence on our campus to respond to routine and emergency calls for service
Career and Employment Services	Offers a variety of programs, services, and resources that can enhance student's university experiences and contribute to their employment and career goals
Centre for Teaching and Learning	Works with members of the campus community to enhance the practice, culture, and scholarship of teaching and learning; to support the integration of effective teaching practices and technologies that extend and enrich learning; and to support to instructors using the University's Learning Management System, Blackboard Learn
Chemical Control Centre	Promotes the safe use of hazardous materials by the University community through controlled acquisition, distribution, disposal, and training services
EPICentre	The Entrepreneurship Practice and Innovation Centre (EPICentre) is a campus-wide initiative created to encourage entrepreneurship on campus, and support students and graduates interested in launching their own businesses
Faculty of Graduate Studies	Brings together a community of scholars and researchers committed to supporting graduate education and fostering student development

<http://www.uwindsor.ca/aauheads/resources/>



Budgets & Finance

Employment & HR

Committees & Strategies

Facilities & Maintenance

Outreach & Recruitment

Research & Innovation

Student Services

Teaching & Programs

NEW: Resources from AAU Heads Orientation 2017

ESSENTIALS: A-Z List of Campus Services

Acronyms | Campus Map | Emergencies | FAQ | Find a Person | Important Dates | Important Forms | Policies, Procedures & Bylaws | Workshops & Campus Events

ESSENTIALS: A-Z List of Campus Services | Acronyms
| Important Dates | Important Forms | Policies, Proc

And... Your Sounding Board!

Nick Baker

Director, Office of Open Learning

Jeff Berryman

Associate Vice-President, Academic

Ryan Flannagan

Associate Vice-President, Student Experience

Iva Gentcheva

Executive Assistant to the Provost and Vice-President, Academic

Erika Kustra

Director, Teaching and Learning Development

Heather Pratt

Executive Director, Office of Research and Innovation Services

Rob Nelson

Department Head, History

Renee Wintermute

University Secretary

Your Campus Network: Problem Solving

At your tables:

- Review each problem
 - Identify questions and ask for clarifications
 - Identify challenges
 - Using Campus Network Services list and online A-Z Directory, identify who to contact for advice or help
- We'll debrief them as a group

Online Resource: <http://www.uwindsor.ca/aauheads/resources/>

The Challenging First-Year Course

“Hit the Ground Running!”
Says everyone.

Launching Your Research

K.W. Michael Siu, Vice-President, Research and Innovation Services

Heather Pratt, Executive Director, Research and Development
Office of Research and Innovation Services

Strategic Research Plan

Four Grand Challenges



Healthy Great Lakes

- Advance and communicate fundamental knowledge of Great Lakes science;
- Develop technologies that improve water quality and biota health;
- Contribute to a culture that values and prioritizes activities that enhance the health of the Great Lakes;
- Understand and help develop the policies and regulations to safeguard the Great Lakes;
- Mitigate and adapt to the effects of natural and societal impact to the Great Lakes and lead remediation efforts in the Great Lakes region and beyond; and
- Train highly qualified personnel who will become next-generation scholars and leaders.



Sustainable Industry

- Collaborate with multi-sector industrial stakeholders to help build sustainable industries;
- Mobilize knowledge and technologies to collaborating industry partners;
- Accommodate and facilitate the collaboration with participating industrial partners to support developing next-generation ideas and products;
- Provide business, legal and technical advice to industries on a collaborative basis; and
- Train highly qualified personnel who will become next-generation industrial entrepreneurs, leaders, scientists and engineers.



Understanding Borders

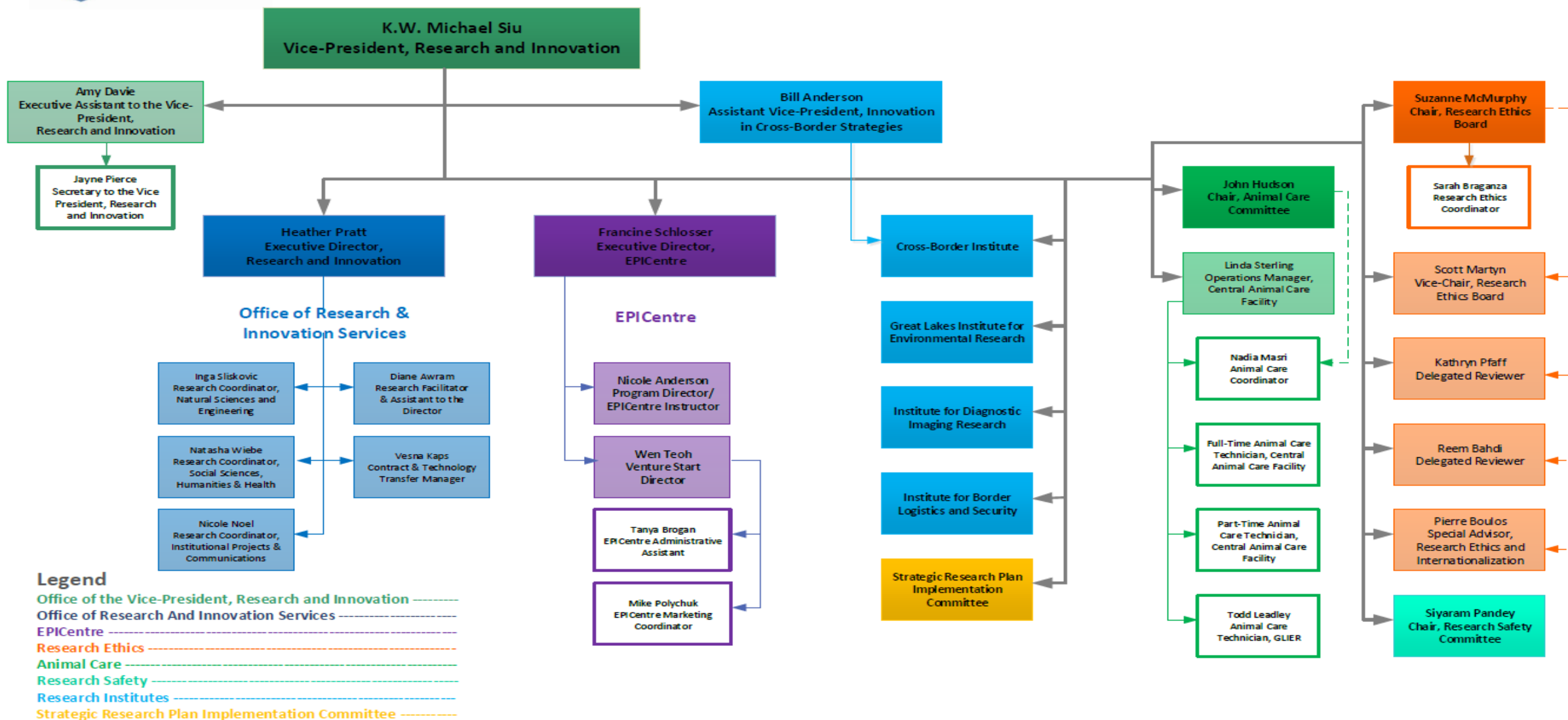
- Understand issues;
 - logistical, economical, societal, human, cultural, political, legal and trade, associated with borders and border-crossing;
- Understand and support the development of policies, regulations and best practices that will facilitate border crossing;
- Develop the science, technology and engineering that will facilitate safe and secure border crossing, including that of knowledge, goods, certifications, regulations and people;
- Train highly qualified personnel who will become next-generation scholars and leaders; and
- Understand and support bi-national coordination of environmental and emergency management in border regions.



Viable, Healthy & Safe Communities

- Explore and understand the social, economic and health conditions that will lead to VHS communities;
- Advance knowledge about the lives of designated groups and diverse people, not only of problems, but also of strengths and resiliencies to maximize the health of people and the vibrancy of communities;
- Advance the humanities, arts, social and natural sciences, technologies and engineering that will enhance our community;
- Build synergy from various stakeholders and sectors that will enhance the above goals; and
- Train HQP who will become next-generation social and technological entrepreneurs, scholars & leaders.





Office of Research & Innovation Services (ORIS)



Office of Research & Innovation Services (ORIS)

The Office of Research and Innovation Services staff members provide services in:

Research Funding

- Identifying funding sources and research opportunities for faculty;
- Providing information about funding sources, programs, deadlines, application material, regulations and policies;
- Acting as liaison with funding agencies on behalf of researchers;
- Reviewing applications for research grants to ensure consistency with the agency's conditions and the University's policies;
- Assisting in the development, submission and tracking of grant proposals and contracts.



Office of Research & Innovation Services (ORIS)

Research Funding *continued*...

- Providing assistance to faculty in structuring budgets of research proposals;
- Establishing research accounts with Research Finance;
- Administration of internal competitions for research support;
- Organizing and conducting workshops to assist in writing and preparing proposals;
- Maintenance of statistics on research funding at the University of Windsor;
- Publicizing opportunities and research related events to the University research community.



Office of Research & Innovation Services (ORIS)

Research Partnerships and Technology Transfer

- Assist in developing collaborations with industry and community organizations to bring new ideas and technologies into our region;
- Research Contract and Agreements, legal reviews;
- Providing advice and assistance pertaining to intellectual property matters, technology transfer and commercialization;
- Filing and maintaining IP/Patents that have been assigned to the University of Windsor;
- Identification of funding sources to further develop technology;
- Identification of industry receptors to license technology to.



Research Requiring Certification

University of Windsor resources available to researchers requiring certifications or approvals in order to conduct research include:

Research Ethics Board (REB)

- Oversees all matters pertaining to Research, funded or not, that involves human participants/subjects

Animal Care Committee (ACC)

- Oversees all matters pertaining to research, funded or not, that involves animals

Research safety Committee (RSC)

- Oversees all matters pertaining to biosafety, radiation, x-ray, laser and laboratory safety at the University



UWindsor Research & Innovation

Promoting and supporting Research, Scholarship and
Creative Activity

More Info: www.uwindsor.ca/oris

