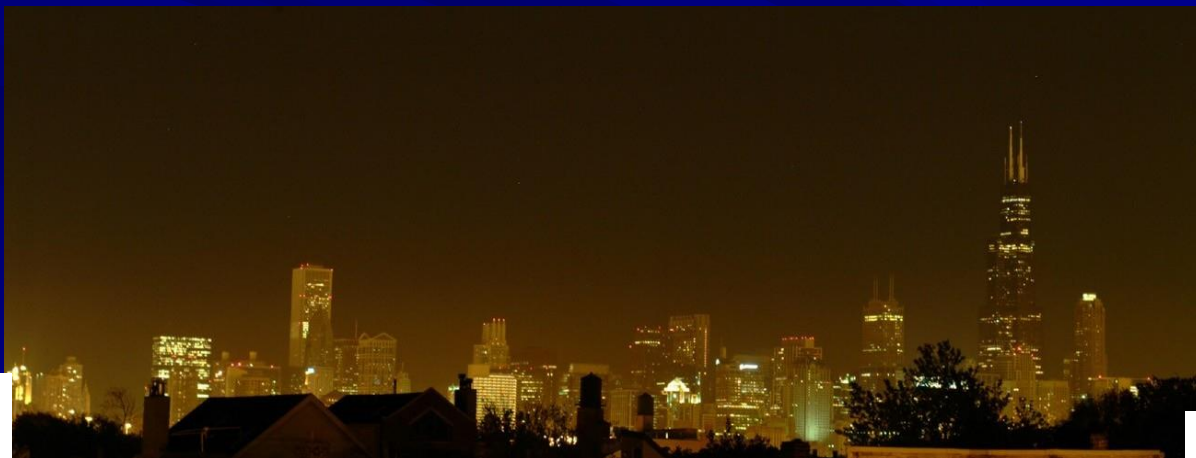


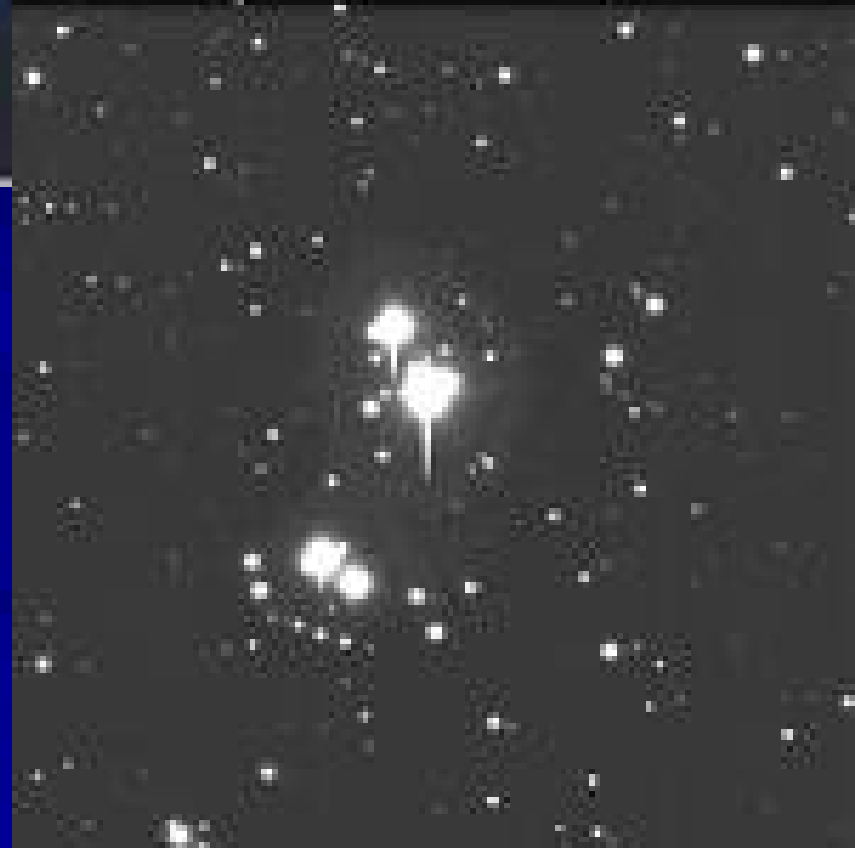
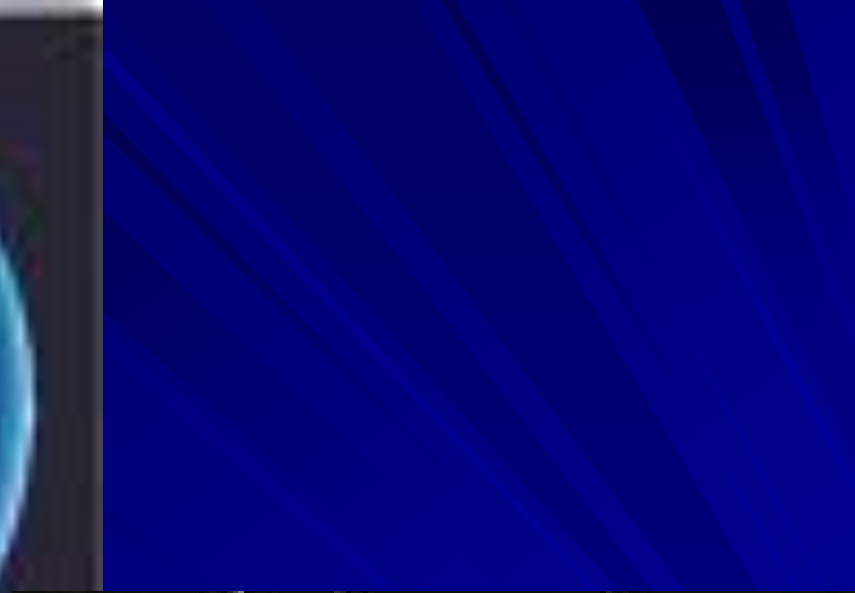
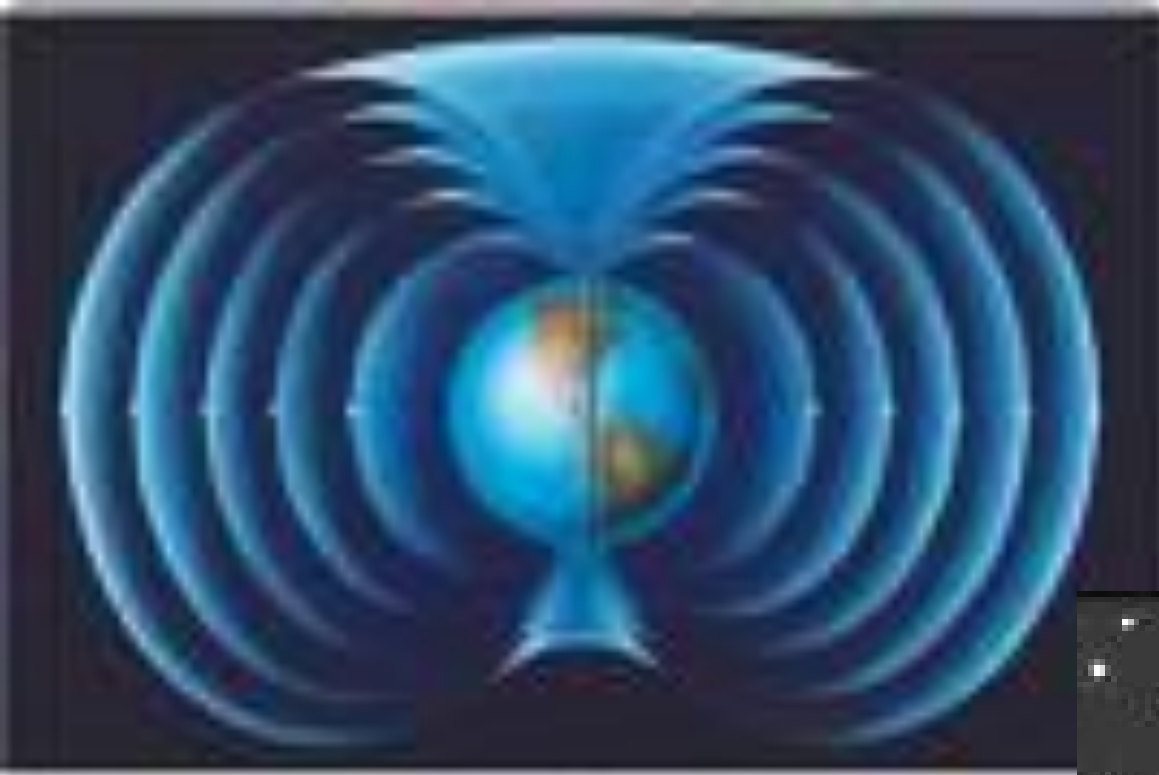
# CHICAGO BIRD COLLISION MONITORS

*Light reduction for the protection of  
migratory birds*



ANNETTE PRINCE











## **CHICAGO'S McCORMICK PLACE**

**2 year study found turning off lights resulted in 83% fewer birds deaths – 1,297 birds crashed into lit windows compared to 192 into unlit windows**

“Turning Off Building Lights Reduced Bird Window-Kill 83% Field Museum Scientists Release Data from Two-Year Study.” Field Museum Press Release, 2002





LIGHTS  
OUT  
CHICAGO

REDUCE COLLISIONS AND SAVE MIGRATORY BIRDS







LIGHTS ON



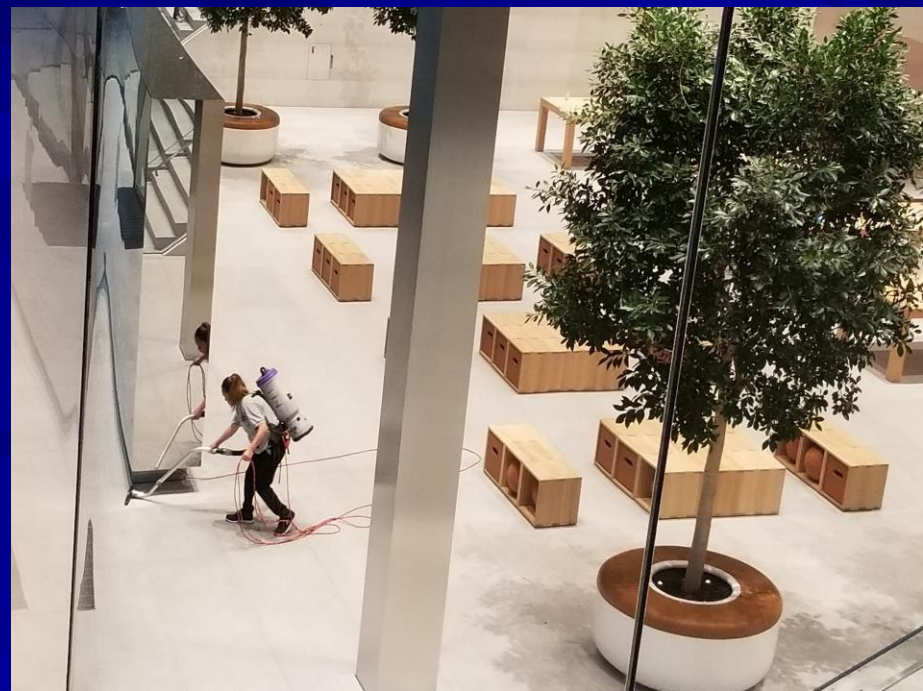
LIGHTS OFF





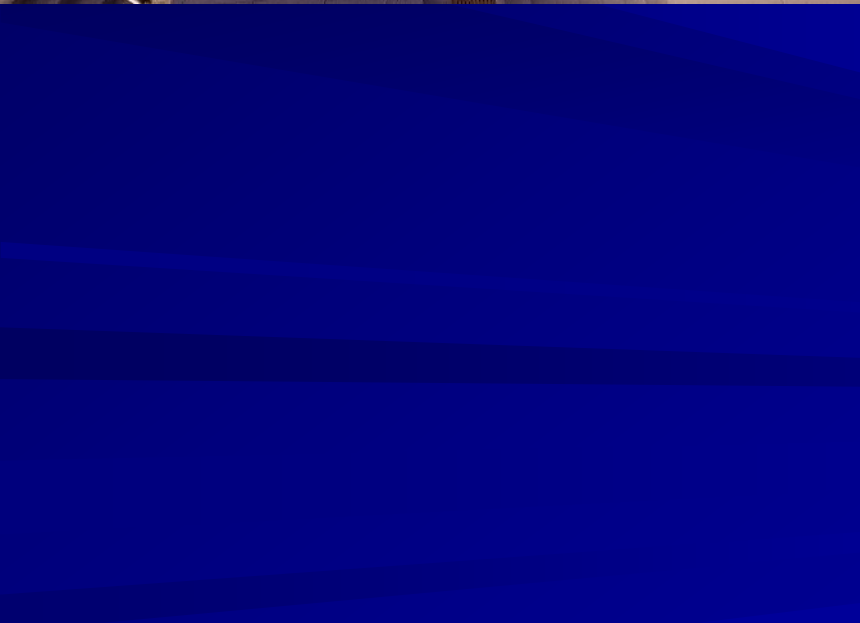


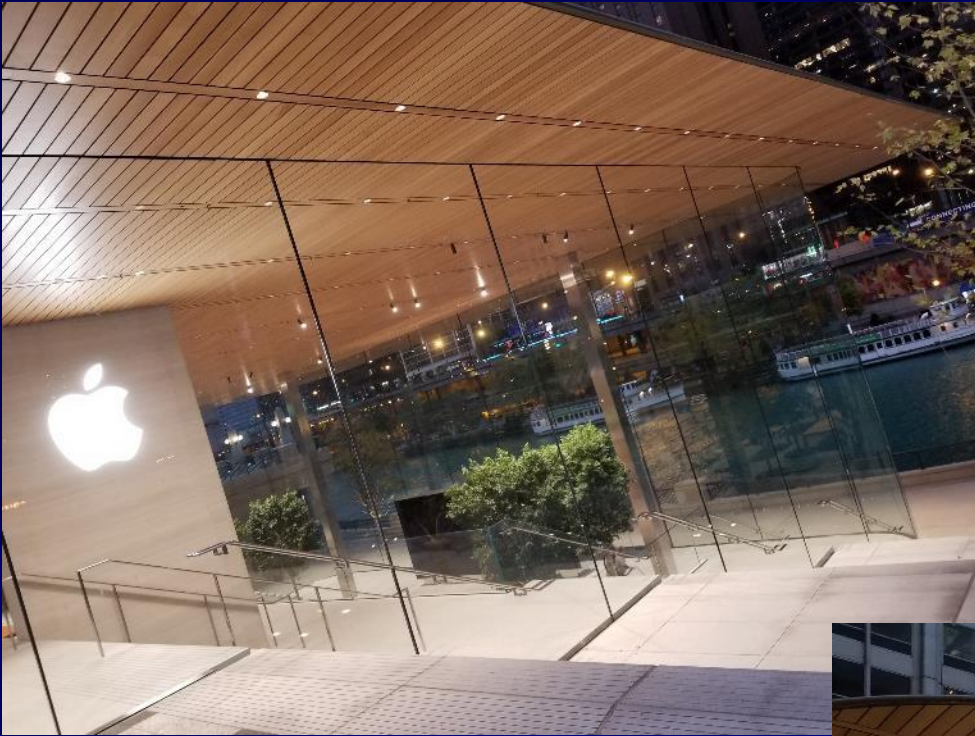












FROM THE CO-CREATOR OF KING CORN



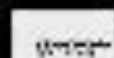
# THE CITY DARK

a search for night on a planet that never sleeps

"Gorgeous"  
-IndieWire



THE FILM WAS PRODUCED BY JACQUES PEREZ AND JOHN W. COLE  
DIRECTED BY JOHN W. COLE  
CASTING BY JACQUES PEREZ  
EDITED BY JACQUES PEREZ  
MUSIC BY JACQUES PEREZ  
EXECUTIVE PRODUCERS: JACQUES PEREZ, JOHN W. COLE  
PRODUCED BY JACQUES PEREZ  
WRITTEN BY JACQUES PEREZ  
DIRECTED BY JOHN W. COLE



WWW.BESTFILMS.COM  
WWW.WHISKEYCAT.COM

AMC+ CHANNEL





## Chicago Bird Collision Monitors - CBCM

### Migratory Bird Rescue and Protection

[Found an Injured Bird?](#)

[Found a Baby Bird?](#)

[HOME](#)

[ABOUT Us](#)

[GET INVOLVED](#)

[LIGHTS OUT](#)

[BIRD SAFE BUILDINGS](#)

[URBAN THREATS TO BIRDS](#)

[EDUCATIONAL PROGRAMS](#)

**It is estimated that a billion birds die and countless others are injured each year in North America as a result of window collisions!**

Chicago Bird Collision Monitors (CBCM) is an all-volunteer conservation project dedicated to the protection of migratory birds through rescue, advocacy and outreach.

CBCM works to protect and recover migratory birds that are killed and injured in the downtown Chicago area each spring and fall migration. Confusing lights and glass building design cause thousands of birds migrating along the lakefront to collide with downtown buildings. Our teams spend the early morning hours recovering these birds to save the injured and document the fatalities that have occurred.

We promote bird-safe lighting and building design to reduce bird collision hazards. Our project collaborates with building management, architects, planners and the public to prevent bird collisions.



Photo: Dolan Geiman