



**UNIVERSITY OF WINDSOR  
FACULTY OF LAW**

10<sup>th</sup> November 2021 (photos from 4<sup>th</sup> November )

**diamond  
schmitt**

DI MAIO DESIGN ASSOCIATES ARCHITECT  
INCORPORATED  
**DMA**

## **Guiding Principles for the Transformation of the Ron W. Ianni Law Building**

1. Create a welcoming and accessible place that instils pride in Windsor Law
2. Increase usable building space in a way that puts the student experience at the centre and that supports dynamic teaching, research, experiential learning, and service
3. Design flexible and multi-purpose spaces that are forward-looking and open to change
4. Connect the building to our local Indigenous peoples, physical environment, heritage, and communities
5. Promote environmental sustainability, health and well-being

## **TWL – DESIGN PRINCIPLES**

### **ACCESSIBILITY**

- a. New accessible entries to Ground Floor.
- b. Accessible circulation by one new elevator.
- c. Accessible classrooms and commons areas. Flat floor classrooms. Existing stepped Commons leveled.

### **ENTRANCE STRATEGY**

- a. West entrance with new accessible ramp to Ground Floor Commons.
- b. New accessible North entrance.

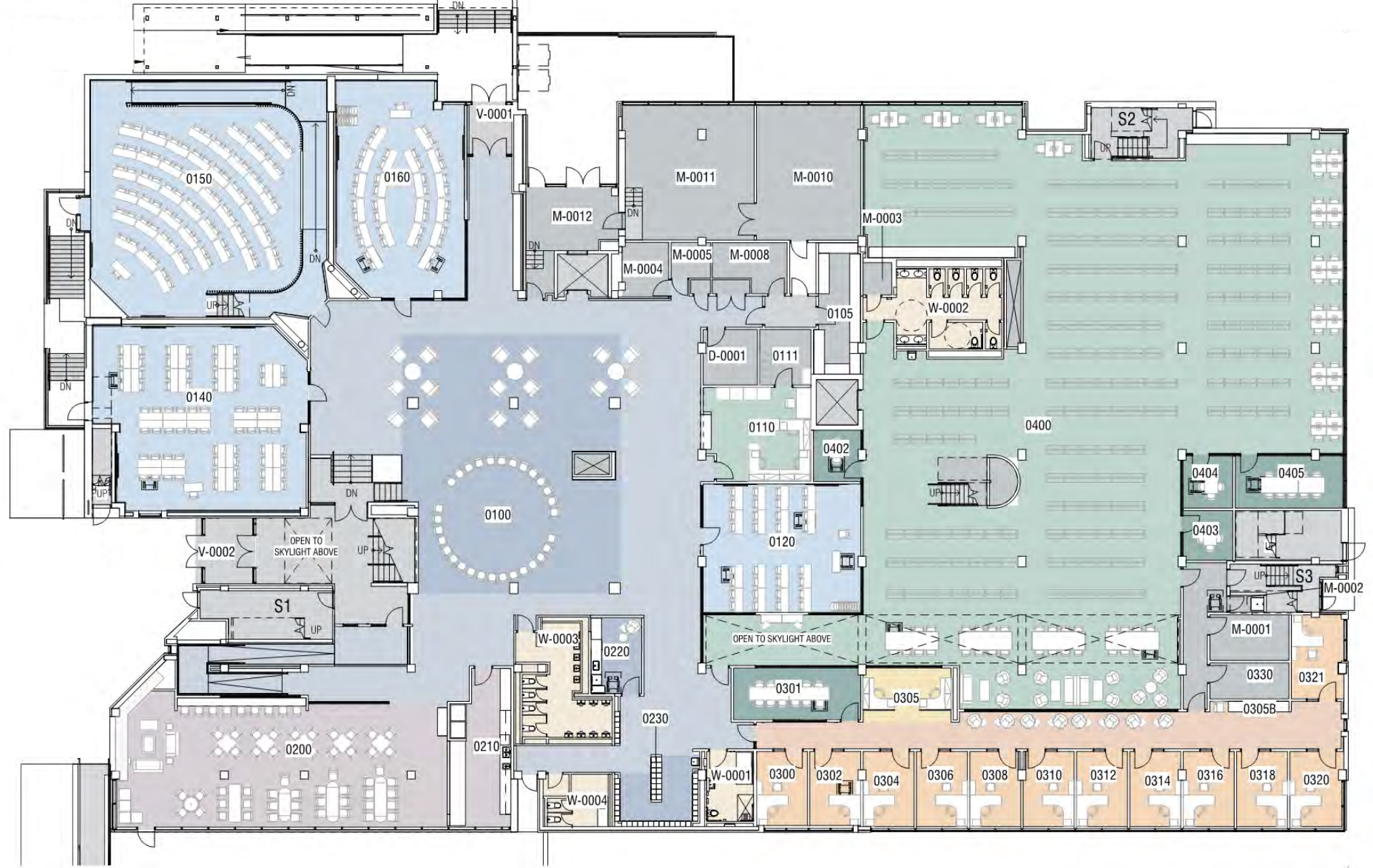
### **NATURAL LIGHT**

- a. New windows provide natural light to classrooms and workspaces.
- b. New visual connection between spaces. Interior solid walls replaced with new glass walls.
- c. New glazing around existing light wells allows natural light throughout interior.

### **INCREASE PROGRAM AREA WITHIN THE BUILDING FOOTPRINT**

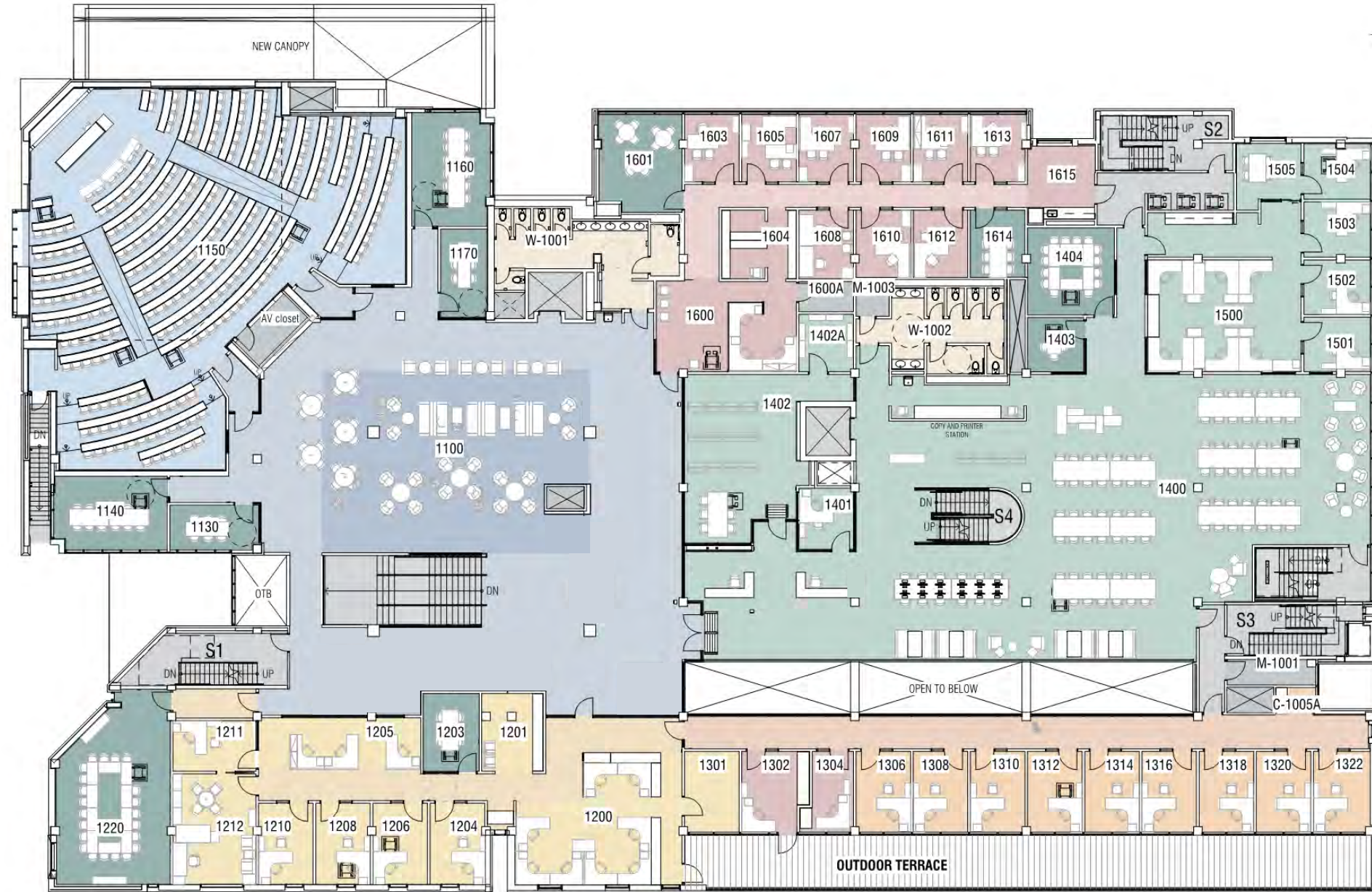
- a. Mechanical room relocated to the roof level. Mezzanine becomes a student collaborative space.
- b. Exterior café terrace captured as useable interior space.
- c. Unused roof terraces at first floor to become part of the classroom area.





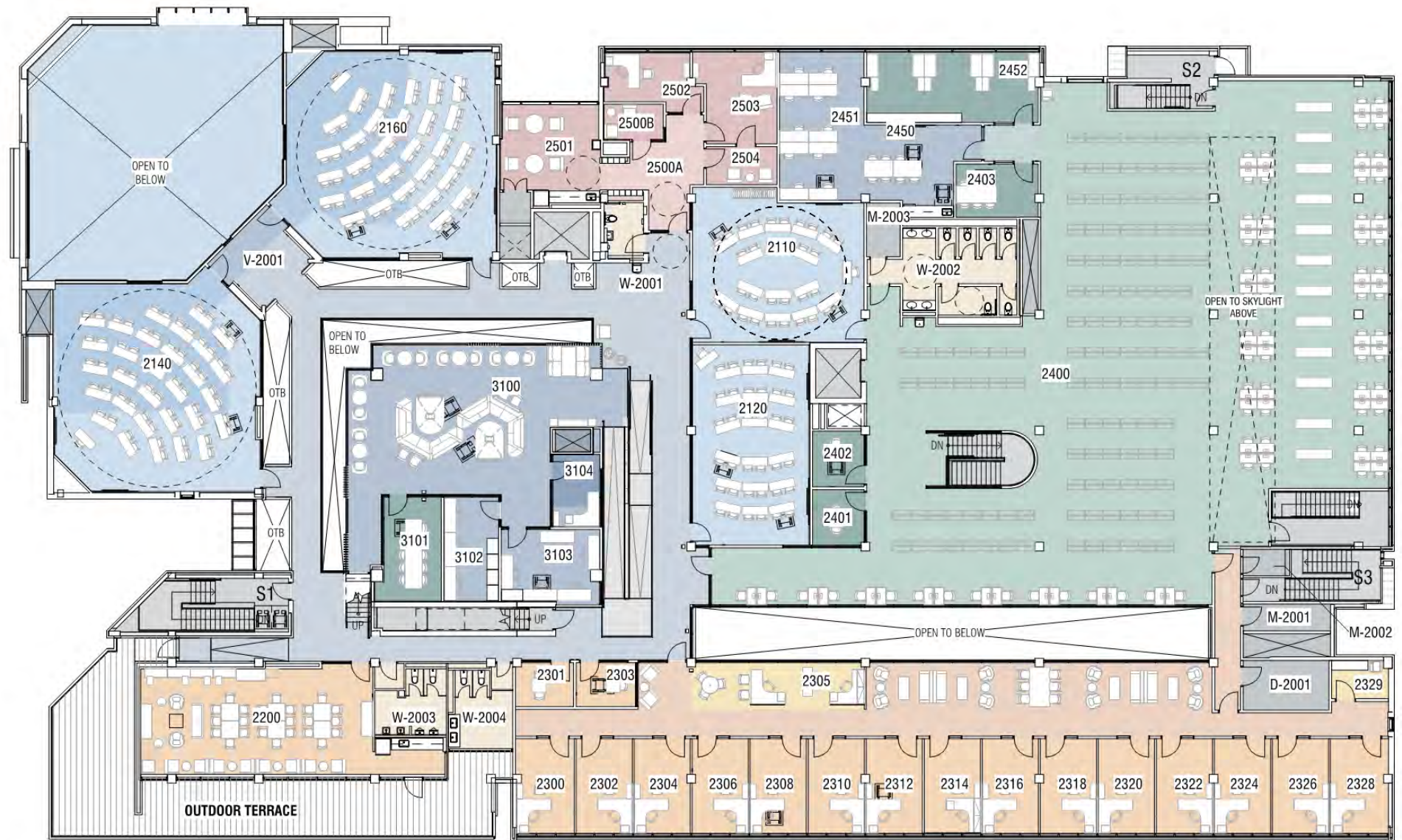
GROUND LEVEL PLAN





## LEVEL 1 PLAN





LEVEL 2 PLAN



# Exterior



SOUTH-WEST APPROACH





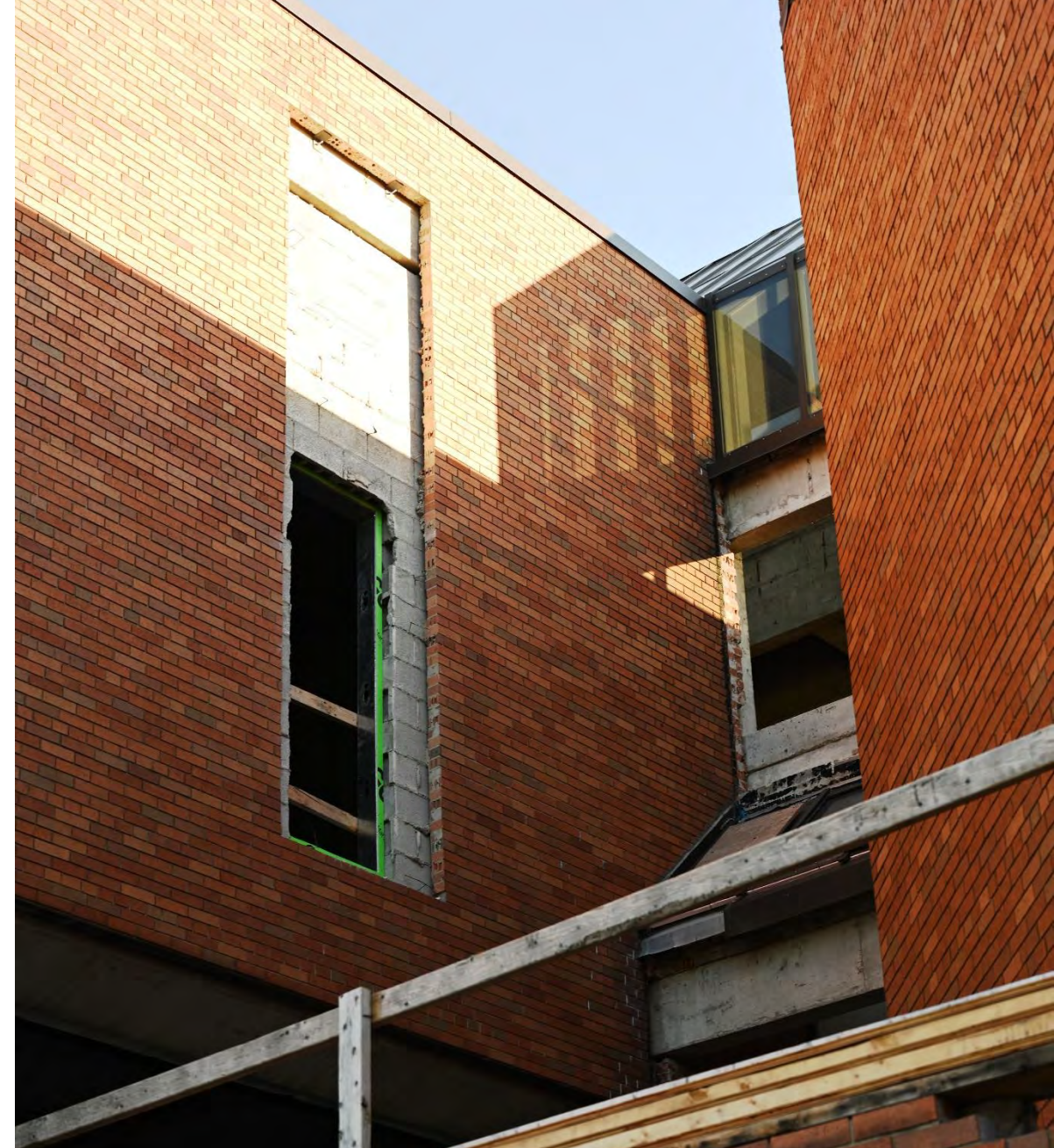
West Façade





West Façade





West Façade & Window to Class 2140





SOUTH-WEST APPROACH





SOUTH FACADE





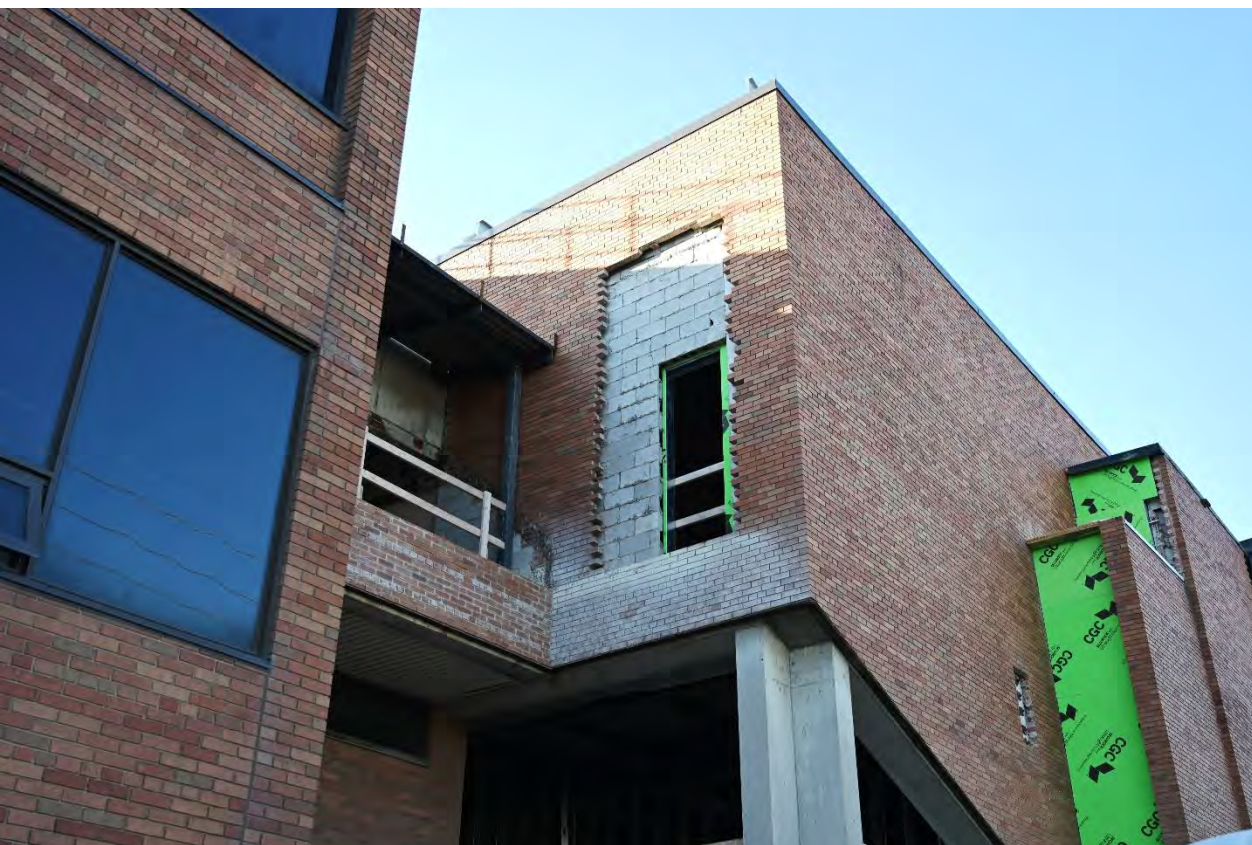
South Façade





View from South West





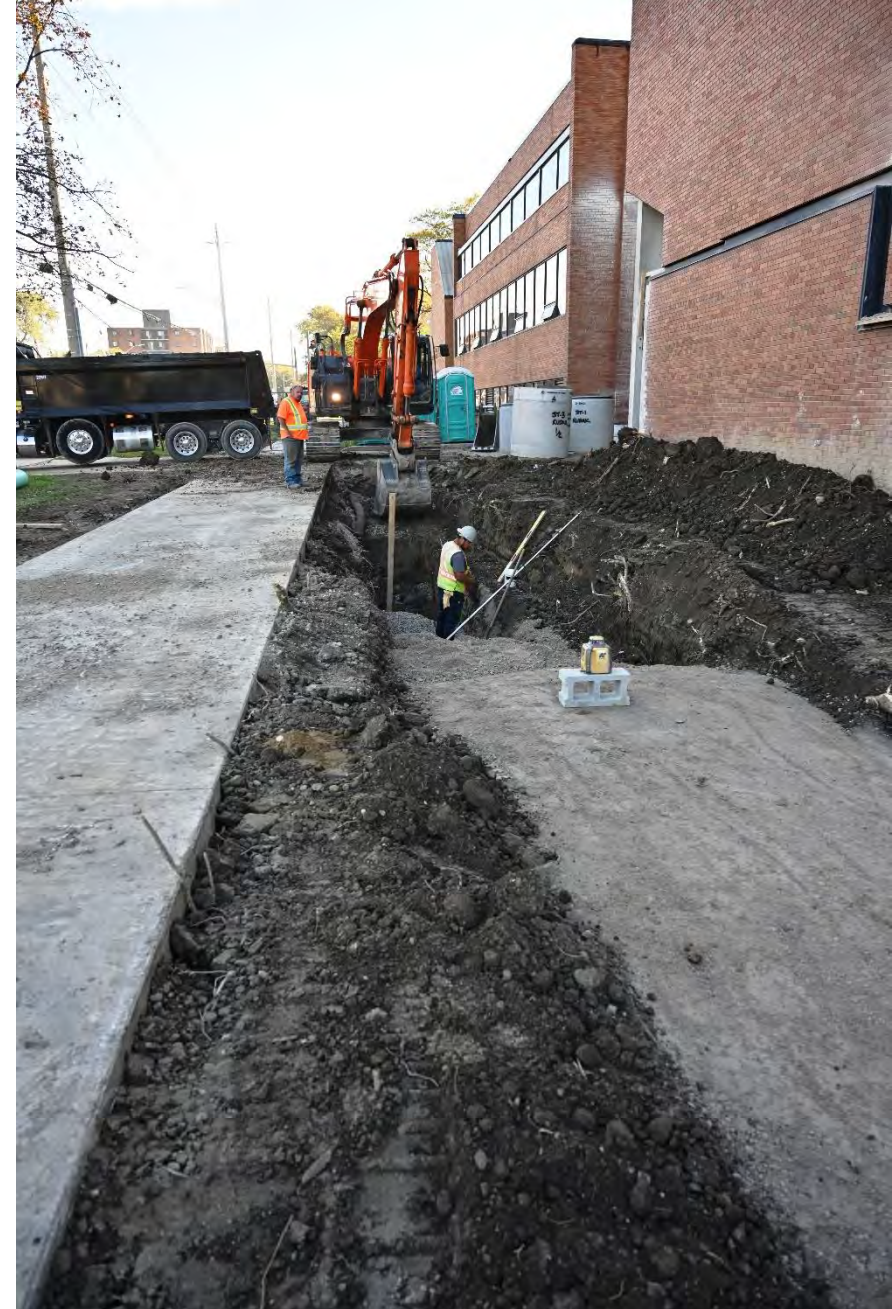
North Façade: New opening to  
Class 2160 & New Roof Structure to Lounge 2501





North Façade: Civil Excavation





North Façade: Civil Excavation





NORTH APPROACH





North Façade: New Entry & Moot Court Opening





NORTH-WEST APPROACH





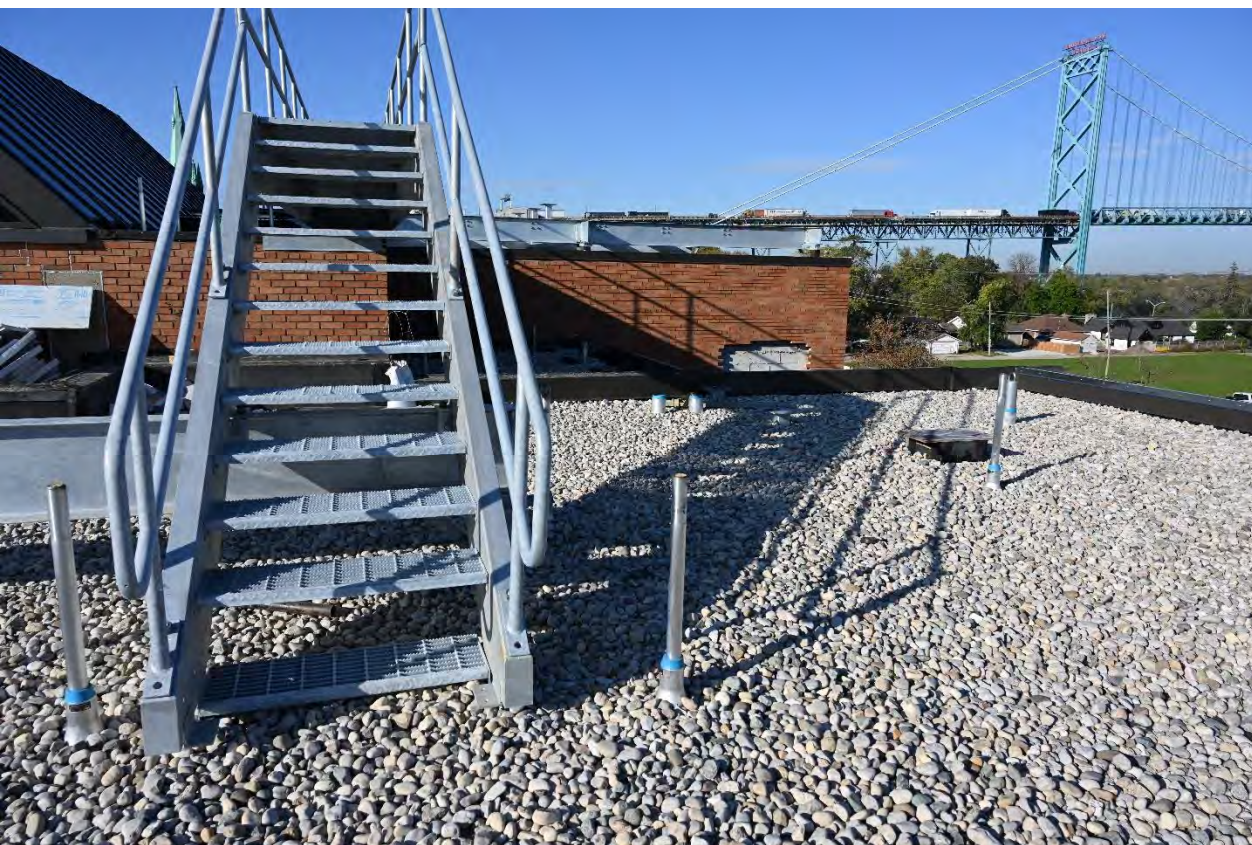
View from North West: Moot Court Openings





Roof Exterior



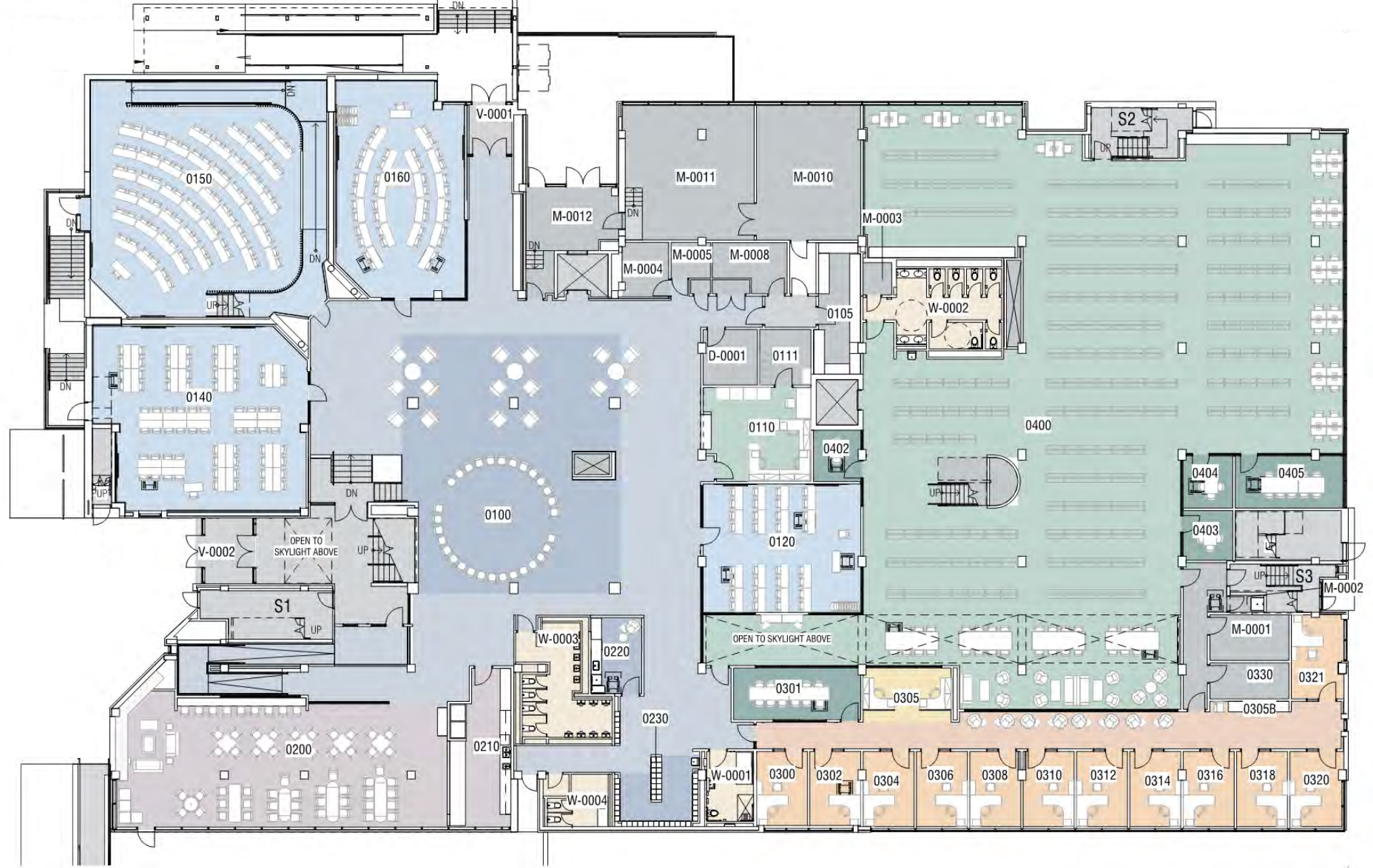


Roof Exterior



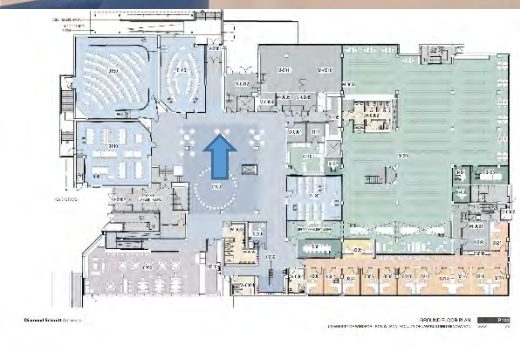
# Ground





GROUND LEVEL PLAN





GROUND: LOWER COMMONS NORTH ENTRANCE





Ground: North Entrance looking South





LEVEL G CLASSROOM 0150





LEVEL G CLASSROOM 0150





Ground: Class 0150





LEVEL G CLASSROOM 0140





Ground: Class 0140





Ground: Lower Commons looking East from arrival





Ground: Lower Commons looking East





Ground: Looking East from Classroom 0120





Ground: Library looking East





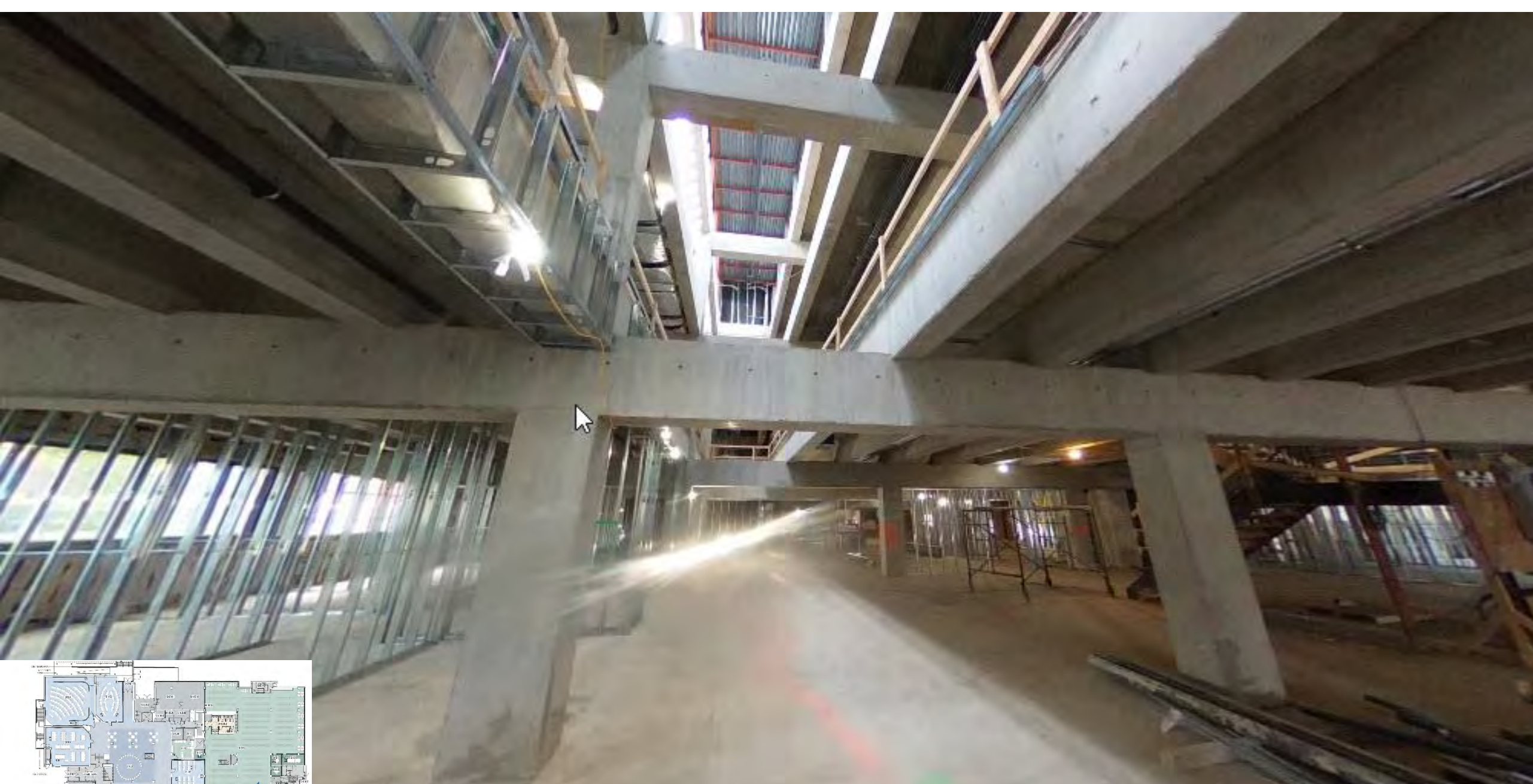
Ground: Library looking South





Ground: Library looking North





Ground: Library looking West





Ground: New Ramp from West Entry  
seen from Cafe





2021/10/21 15:18



Split  
Screen

13 days and 21 hours ago



Ground: New Ramp & Café looking East



# Level 1





## FIRST FLOOR PLAN





LEVEL 1 UPPER COMMONS





Level 1: Upper Commons





Level 1: Upper Commons





2021/10/21 16:05

13 days and 20 hours ago



Split  
Screen



Level 1: Seminar Room looking West





LEVEL 1 COMMONS





Level 1: Upper Commons





Level 1: Conference





Level 1: Conference & Dean Suite Electrical Rough-in





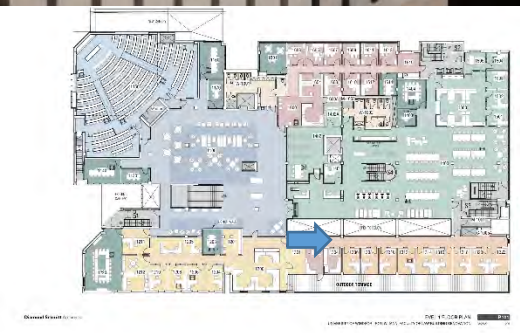
Level 1: Dean Suite Admin Hub





Level 1: General Office looking West





LEVEL 1 FACULTY CORRIDOR





Level 1: Faculty Office Corridor looking East





Level 1: Faculty Office looking North into Library





Level 1: Library looking North





Level 1: Library looking North





Level 1: Student Services Lounge looking West





Level 1: Student Services Meeting Room looking N-West





STUDENT SERVICES RECEPTION





Level 1: Student Services Reception looking West





Level 1: Moot Court rear looking South





MOOT COURT LOOKING WEST





Level 1: Moot Court rear looking West



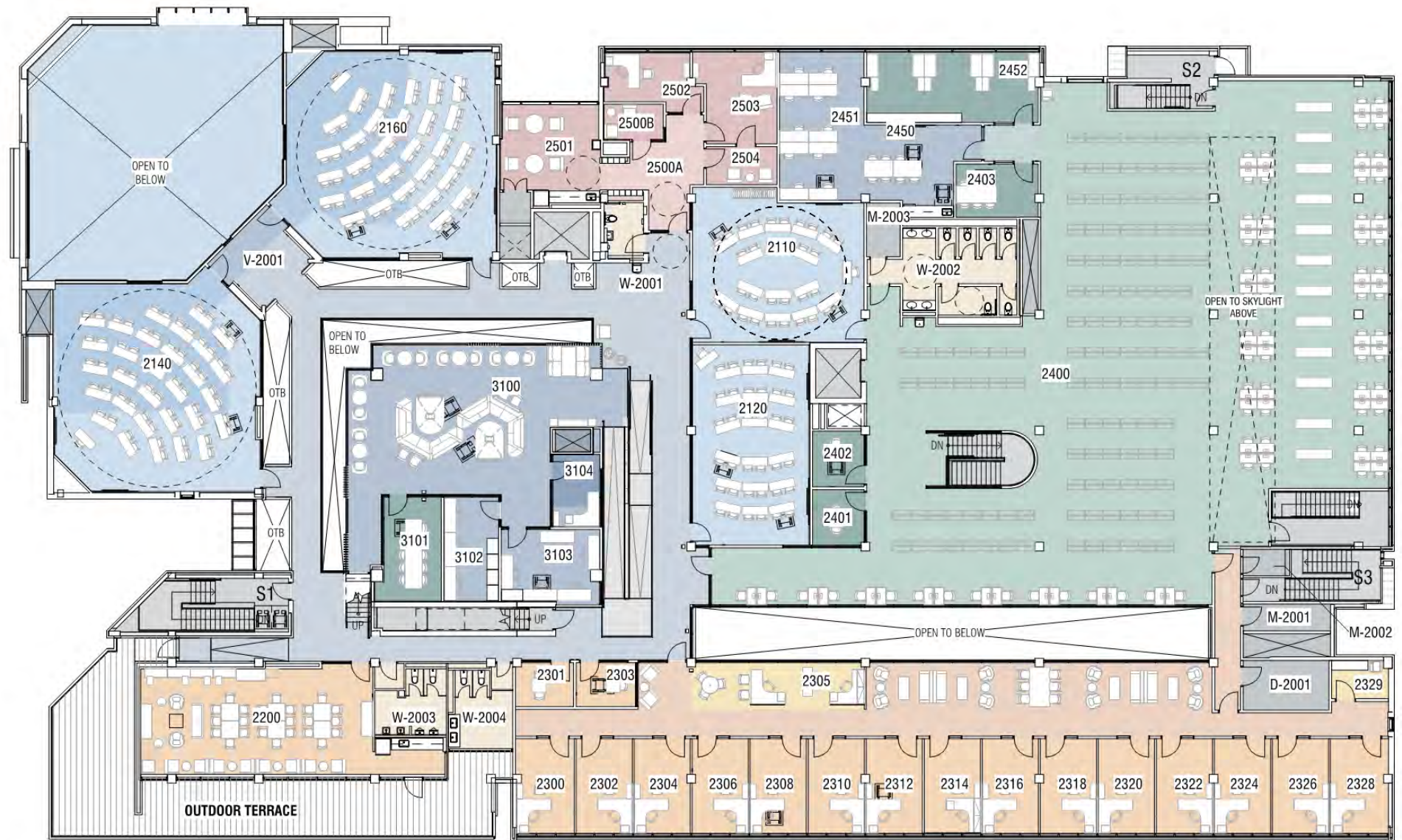


Level 1: Moot Court from front



# Level 2





SECOND FLOOR PLAN





LEVEL 2: ADMIN HUB





Level 2: Faculty Corridor looking West





## LEVEL 2: ADMIN HUB





Level 2: Faculty Corridor looking West





Level 2: Faculty Corridor looking West





Level 2: Faculty Office looking North





Level 2: Faculty Office Corridor looking North





Level 2: Library looking North





LEVEL 2 LIBRARY READING ROOM





Level 2: Library looking North





Level 2: Library looking South





LEVEL 2 CLASSROOM 2110





Level 2: Classroom 2110 looking West





LEVEL 2 CCEL







Level 2 CCEL





Level 2: Corridor from Elevator looking West





LEVEL 2 CLASSROOM 2160





Level 2: Classroom 2160 looking West





LEVEL 2 CCEL



2021/11/04 15:45

Split  
Screen

5 days and 7 hours ago



Level 2: Corridor looking to CCEL



# Transforming Windsor Law



Program requested		Existing	Proposed
3 seminar	8-15 seats	0	2 seminar 8-15 seats
2 classroom	30-40 seats	1 classroom 34 seats	0 30 seats
		1 classroom 40 seats	3 classroom 40 seats
2 classroom	60-70 seats	4 classrooms 54-58 seats	1 classroom 60 seats
		2 classrooms 72 seats	
2 classrooms	85 seats	0	3 classroom 85 seats
1 classroom	100 seats	1 classroom 113 seats	1 classroom 100 seats
1 classroom	250 seats	0	1 classroom 275 seats
Total	785 seats	Total 563 seats	Total 840 seats
Total 11 classrooms		Total 9 classrooms	Total 11 classrooms



GROUND FLOOR				
TYPE		LECTURE	DISCUSSION	GROUP WORK
LOCATION	0120 East Classroom	40	36	40
	0140 West Classroom	86	56	84
	0150 North-West Classroom	100	66	88
	0160 North Classroom	60	40	60
SECOND FLOOR				
TYPE		LECTURE	DISCUSSION	GROUP WORK
LOCATION	2110 East Classroom	40	24	30
	2120 East Classroom	44	36	44
	2140 West Classroom	86	58	84
	2160 North Classroom	86	58	84