



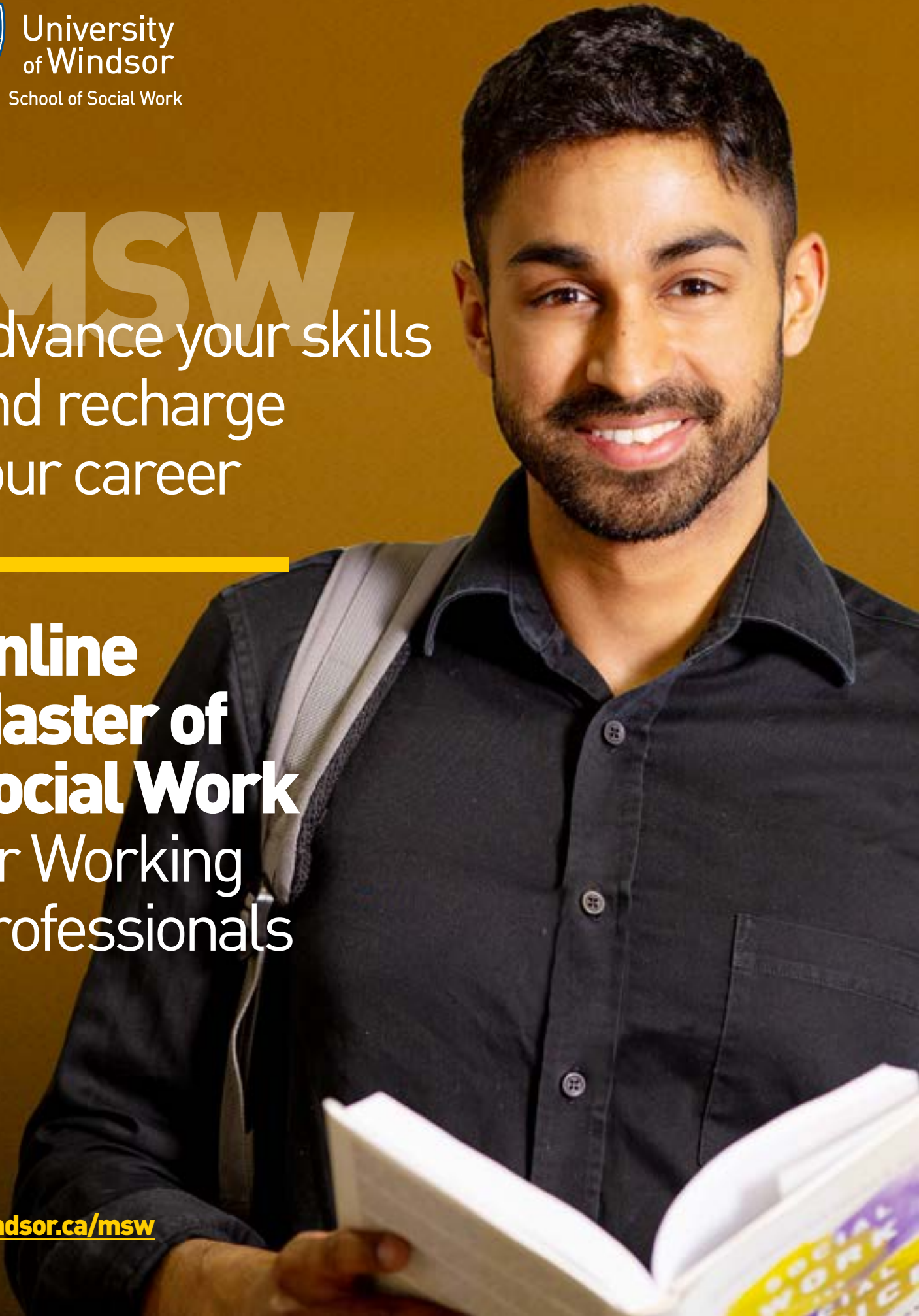
University
of Windsor
School of Social Work

MSW

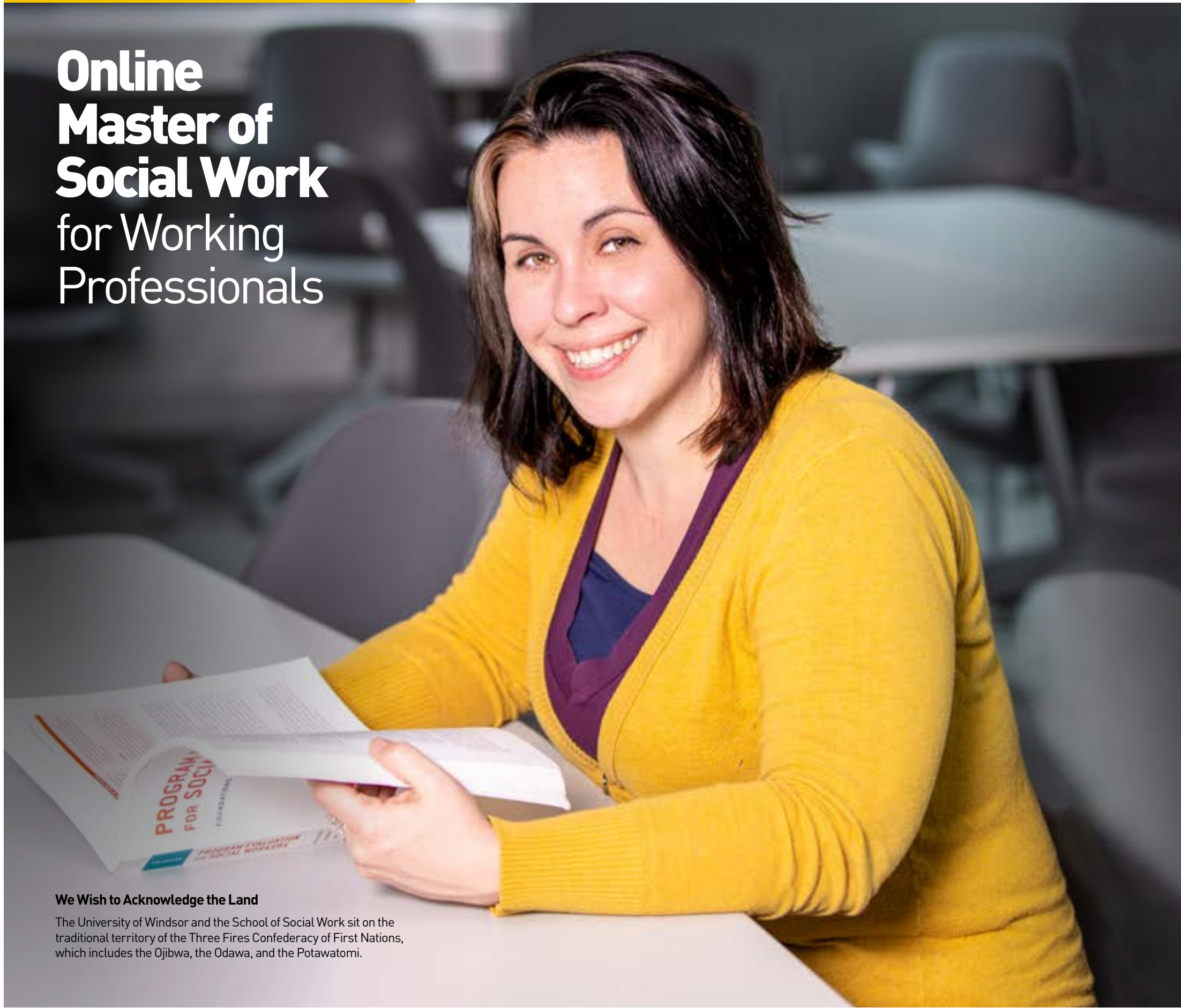
Advance your skills
and recharge
your career

**Online
Master of
Social Work**
for Working
Professionals

uwindsor.ca/msw



Online Master of Social Work for Working Professionals



We Wish to Acknowledge the Land

The University of Windsor and the School of Social Work sit on the traditional territory of the Three Fires Confederacy of First Nations, which includes the Ojibwa, the Odawa, and the Potawatomi.

Mission Statement of the Master of Social Work for Working Professionals Program

- To promote social justice through quality professional education, advocacy, community partnerships, and the development and dissemination of knowledge through inquiry.
- Our goal is to provide students the opportunity to enjoy a fulfilling educational experience where they will embrace a leadership role in social work education and research becoming the social work leaders of tomorrow.
- The MSW for Working Professionals is based on the principles of the ecological perspective in social work practice (microsystem, mesosystem, ecosystem, and macrosystem)

Quality Education

Courses are taught by faculty and instructors from the University of Windsor's School of Social Work – recognized for its research, community, engagement, and leadership in providing academic instructors. Faculty and experienced instructors are also selected from Schools of Social Work in your community and across North America.



Earn your MSW degree online while maintaining your full-time job.

#1

The only program offered in an online synchronous weekend format in Canada.



Fully accredited by the Canadian Association for Social Work Education.

Online Master of Social Work for Working Professionals

Advance your skills and recharge your career with the Online MSW for Working Professionals Program

A Master of Social Work (MSW) degree can provide employment opportunities to those who want to make strides in their career. This program will allow students to achieve their goals by providing them with the tools needed for success and enhancing their skills and knowledge in the social work field.

Our ecological perspective model prepares students for opportunities at all levels of practice in a variety of social welfare settings while allowing students to focus their assignments on their area of interest.

Our graduates are eligible for:

- Membership in the Ontario Association of Social Workers
- Membership in the Canadian Association of Social Workers
- Registration with the Ontario College of Social Workers and Social Service Workers



Weekend Classes



**Synchronous
Online Format**



Full-Time Program



Online Master of Social Work for Working Professionals

Program Objective

The objectives of the program are both consistent with the University of Windsor's School of Social Work mission and social justice statements and the current educational policies of the Canadian Association of Social Work Education (CASWE).

The primary objective of the program is to promote the development of practice skills and knowledge-producing graduates who can assume leadership roles in the provision of direct and indirect practice with vulnerable populations. Additionally, this program is intended to prepare you to:

- Develop expertise in the use of social work knowledge, values, and skills with vulnerable populations;
- Incorporate greater depth of knowledge in the application of critical thinking skills;
- Understand and apply the theoretical basis of ecological systems perspective;
- Employ techniques that incorporate social justice, empowerment, and cultural competency and which consider forms and mechanisms of oppression and discrimination;
- Advocate for social and economic change;
- Demonstrate differential use of self with individuals, families, groups, organizations, and communities;
- Evaluate intervention techniques and develop and implement research projects related to one's practice; and,
- Demonstrate leadership in direct practice and indirect practice, including community development; program development; policy creation, reform, and implementation; research development and implementation; and advocacy with all types of systems are emphasized.

Online Master of Social Work for Working Professionals



Program Overview

If you are a working professional and have conferred a Bachelor of Social Work (BSW) or a four-year honours degree from another discipline, the Online Master of Social Work for Working Professionals Program was designed with you in mind.

- The courses are completed sequentially in a modular format so students can focus on one course at a time
- Our online synchronous classes occur on alternating weekends [with some exceptions] during Fridays from 3:30 pm to 9 pm and Saturdays from 8:30 am to 4 pm
- Students will stay in the same cohort throughout the program and courses are exclusive to MSW students

Benefits of the MSW for Working Professionals

- Online synchronous weekend classes
- Maintain full-time employment while enrolled in the program
- Network with other professionals
- Excellent faculty and instructors
- Small class size
- Integrate new learning with professional practice
- University of Windsor's reputation for outstanding social work education
- Includes practicum opportunity provided in-person in Ontario

Online Master of Social Work for Working Professionals



**Weekend classes/
Full-time online program**

32 Regular Track
= 32 months

16 Advanced Standing
= 16 months

Field Education

An integral part of any social work program is the field education component. The field-learning environment provides a unique opportunity for you to develop as an advanced social worker, applying learned principles, theories, and evaluation methods to professional practice.

Each placement must:

- Be in-person within Ontario
- Be completed in the designated term as a block placement:
13 consecutive weeks in length
- Provide new learning at the graduate level

Regular Track Program (2 practicums required)

1. Foundation Field Practicum (FFP) - a minimum of 450 hours completed (5 days per week/35 hours per week) to be completed in Term 4 over 13 weeks
2. Advanced Practice Internship (API) - a minimum of 450 hours completed (5 days per week/35 hours per week) to be completed in Term 8 over 13 weeks

Advanced Program (1 practicum required)

1. Advanced Practice Internship (API) - a minimum of 450 hours completed (5 days per week/35 hours per week) to be completed in Term 4 over 13 weeks

The field learning specialist will navigate the process for students to coordinate and review potential placement opportunities to ensure it will meet individual goals while satisfying the field requirements for the program. The School of Social Work contacts agencies on behalf of the students.

Students can choose one of three placement options:

- **Internal Rotation:** The student may remain within their agency of employment to complete their placement in a new role, under new supervision.
- **Secondment:** The student's current employer may accommodate an opportunity to complete the placement with a partnering agency. This works well within organizations that collaborate on community initiatives.
- **Leave of Absence:** The student may take a leave of absence from their current agency of employment to complete the placement at another organization.

Please Note: In any case, you will be expected to take leave from your current role for the duration of the 13-week field placement.



University of Windsor

School of Social Work

Apply Today





- Go to uwindsor.ca/msw/how-to-apply
- Click 'Apply Now'
- Follow our step-by-step instructions

Contact Us

Toll free from Canada: 1.866.609.4430

Email: msw@uwindsor.ca

Internet: uwindsor.ca/msw

-  University of Windsor MSWwp On-line
-  University of Windsor MSWwp Program
-  mswwp_uwindsor
-  MSWwp Online Program University of Windsor

School of Social Work

Windsor Hall
167 Ferry Street, Room 204
Windsor, Ontario, Canada
N9A 0C5

Admission Requirements

Enrolment is limited. Possession of the minimum requirements does not ensure admission. Requirements are subject to change.

School of Social Work Cohorts Available

Our Regular Track program is 32 months in length and is for applicants with a four-year honour's degree (other than a BSW).

Our Advanced Standing program is 16 months in length and is for applicants with a Bachelor of Social Work from an accredited program.

1. Candidates for admission into the MSWwp Regular Track program require a 4-year honours undergraduate degree (other than a Bachelor of Social Work)
2. Candidates for admission into the MSWwp Advanced Standing program require a Bachelor of Social Work from an accredited program
3. Both programs require a GPA of 73% (B average) or above, based on the last 2 years of the qualifying degree
4. Proof of completion of one undergraduate course in statistics and one undergraduate course in research methods (these must be completed before starting the graduate program)
5. Three letters of Reference (current supervisor, helping professional, and an academic or additional supervisor)
6. Minimum of 2500 hours of experience in a helping profession or social service setting

Please see our website for copies of all application documents: uwindsor.ca/msw/how-apply

