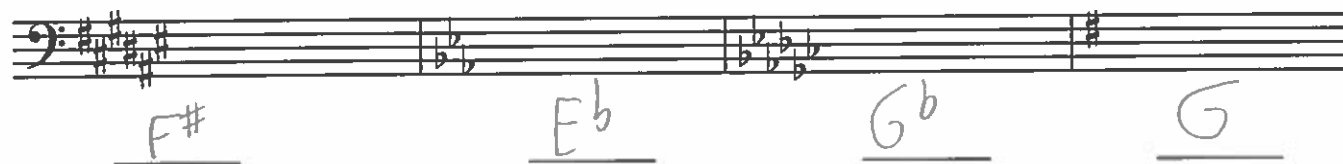
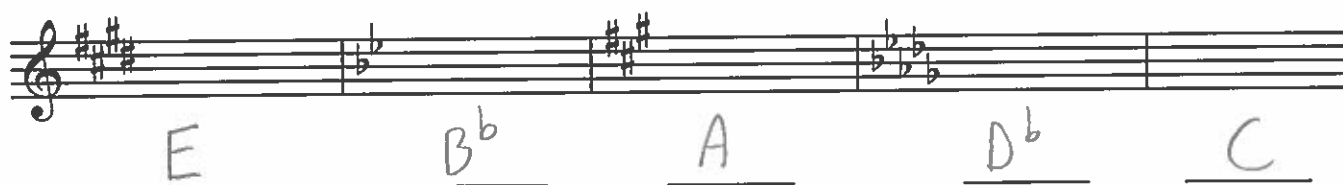
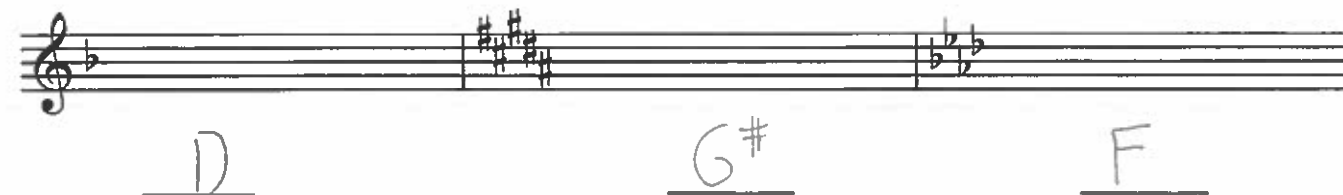
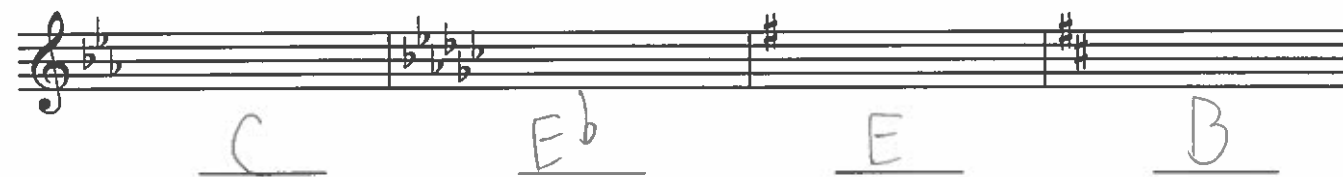
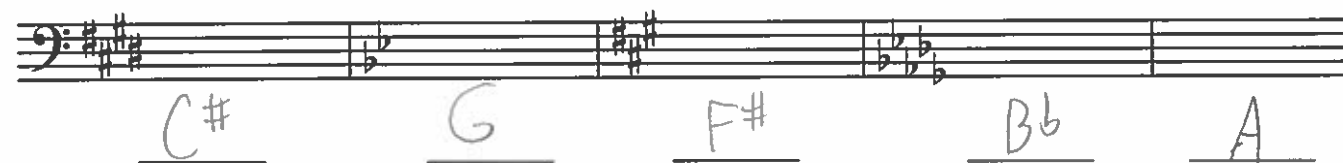


Mastery of core music theory concepts is essential for success in music courses at the University of Windsor. If a student encounters difficulty completing the following exercises accurately, or if completing the exercises takes longer than hour, they will likely have difficulty in core academic music courses at the University of Windsor. Summer music theory rudiments and piano study are essential for students entering SoCA's Music programs.

Name the following major key signatures:



Name the following minor key signatures



Write the following Key Signatures.




F major G major Bb major A major B major E major



Bb minor D minor F minor F# minor E minor



F# major Ab major C# major D major



B minor C minor A minor C# minor



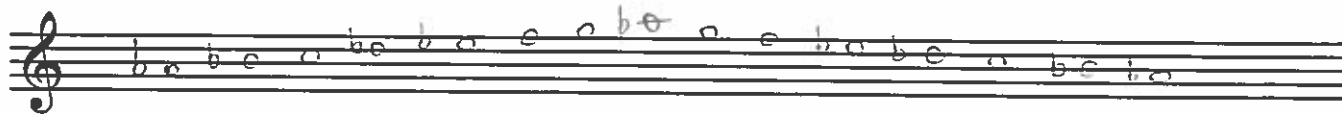
Db major C major Eb major Gb major D major



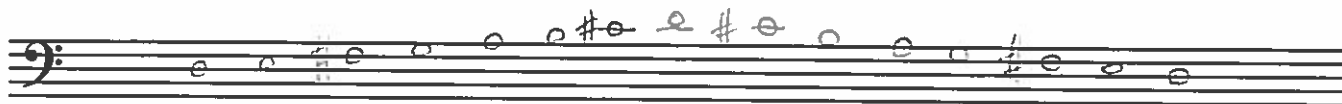
G minor G# minor D# minor Eb minor

Write the following major scales (ascending & descending) without a key signature.

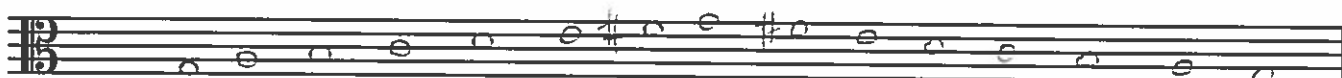
Ab Major



D Major



G Major



Write the following melodic minor scales (ascending & descending) with a key signature.

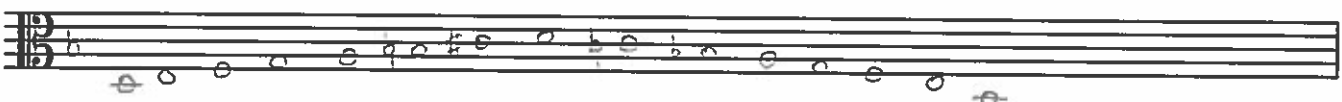
E melodic minor



F melodic minor

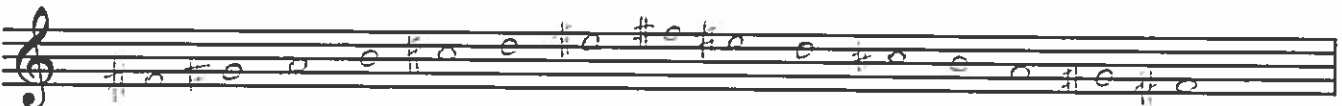


D melodic minor

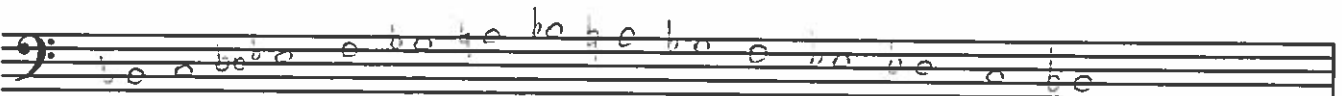


Write the following harmonic minor scales (ascending & descending) without a key signature.

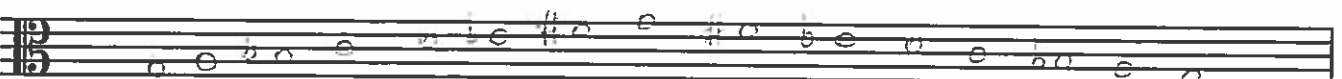
F# harmonic minor



Bb harmonic minor



G harmonic minor



Analyze the following intervals. Use + for major intervals, - for minor intervals, **dim** for diminished intervals, **P** for perfect intervals, and **aug** for augmented intervals. The first one is completed for you as an example.



aug 2nd dim 5 - 3 - 3 P 5 P 8



+ 2 - 3 - 6 - 2 + 2 - 7



- 3 + 3 P 2 aug 4 P 4

Write the indicated intervals **ABOVE** the given note (Do not add accidentals to the given note).

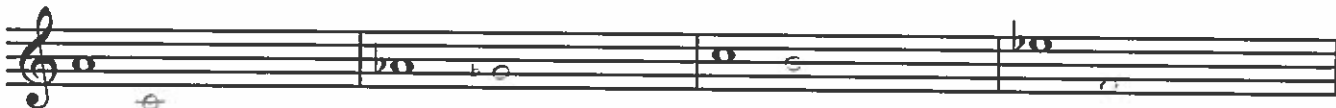


Perfect 4th Major 3rd Perfect 5th Dim. 5th



Major 7th Aug. 5th Minor 3rd Minor 6th

Write the indicated intervals **BELOW** the given note (Do not add accidentals to the given note).



Major 6th Major 2nd Minor 2nd Minor 7th



Major 3rd Perfect 5th Minor 2nd Minor 3rd

Analyze the following triads. The first one has been completed for you as an example.
Triads will be either major, minor, augmented, or diminished.



Ab Major

F minor

E dim.

B^b major

G major



E^b aug

F aug.

C minor

B minor



D minor

B dim.

E major

B^b minor



F[#] minor

D^b aug.

G dim.

C major

Write the indicated triads.



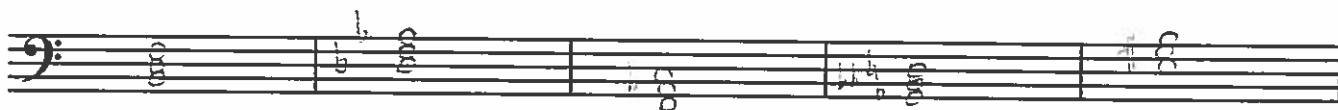
A major

F augmented

D minor

Ab minor

E diminished



B diminished

Db major

F minor

Gb minor

E major



D major

G minor

C[#] diminished

F augmented

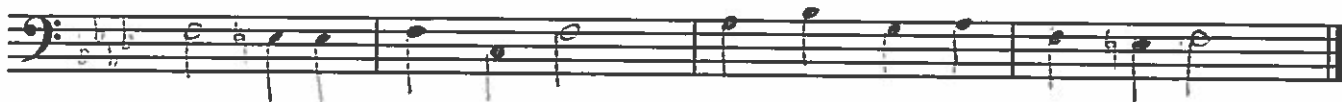
Ab major

Transposition



In what key is this short musical example? G minor

Rewrite the musical example in bass clef and using F as a tonal center.
Be sure use the appropriate key signature and usage of appropriate accidentals.



Identify the correct time signature for the following two-measure rhythmic examples.



Chord Analysis: Open Voiced Triads and Inversions

For each chord below indicate the root of the chord, the quality of the chord (major, minor, diminished, or augmented), and the inversion of the chord (root position, 1st inversion, or 2nd inversion) based upon the lowest note in the triad. The first chord has been completed for you as an example.

Root:	E ^b	<u>B</u>	<u>C</u>	<u>F[#]</u>	<u>E^b</u>
Quality:	Major	<u>dim</u>	<u>maj.</u>	<u>min.</u>	<u>aug.</u>
Inversion:	1st Inversion	<u>1st</u>	<u>2nd</u>	<u>Root</u>	<u>Root</u>

Root:	<u>G</u>	<u>D^b</u>	<u>D</u>	<u>B^b</u>
Quality:	<u>min</u>	<u>maj</u>	<u>aug.</u>	<u>maj.</u>
Inversion:	<u>Root</u>	<u>1st</u>	<u>Root</u>	<u>Root</u>

Root:	<u>C[#]</u>	<u>F</u>	<u>F[#]</u>	<u>B^b</u>
Quality:	<u>dim</u>	<u>maj.</u>	<u>maj.</u>	<u>dim</u>
Inversion:	<u>1st</u>	<u>2nd</u>	<u>1st</u>	<u>Root</u>