



— Transitions Welcome Day!

June 11th, 2026



Your Future. | **Ready for More.**



LAND ACKNOWLEDGEMENT

The University of Windsor is located on the traditional territory of the Three Fires Confederacy of First Nations, including the Ojibwa, the Odawa, and the Potawatomi.

By making this land acknowledgement, we recognize our responsibility to continue addressing systemic and historic injustices.



Your Future. | **Ready for More.**



Agenda

- **Opening Remarks & Introductions**
- **Student Accessibility Services (SAS)**
- **Academic Advising**
- **Clinical Placement & Pre-Clearance Information**
- **Clinical Learning Centre & Sim Lab Tours**

Scan for resources
after today's event



Your Future. | **Ready for More.**



Dean's Welcome



Dr. Debbie Sheppard-LeMoine, PhD, RN



Your Future. | **Ready for More.**



Welcome to the University of Windsor!

Faculty & Staff Introductions



Your Future. | **Ready for More.**



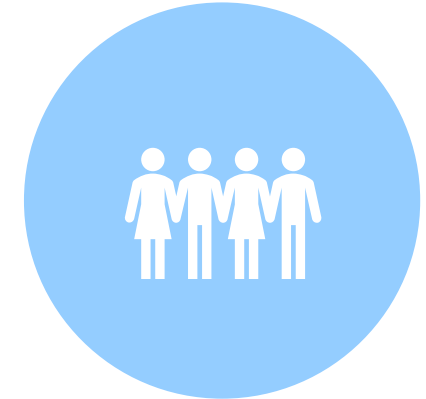
Professor Natalie Bownes



**CLINICAL PRACTICE
LEARNING SPECIALIST
FOR YEAR 1 & 3**



**GUIDE, MENTOR, AND
PROVIDE EDUCATION TO THE
CLINICAL INSTRUCTORS
WHO TEACH YOU IN THE
CLINICAL PLACEMENTS**



**SUPPORT STUDENTS WHO
REQUIRE
ASSISTANCE WITH
CLINICAL**



Your Future. | **Ready for More.**

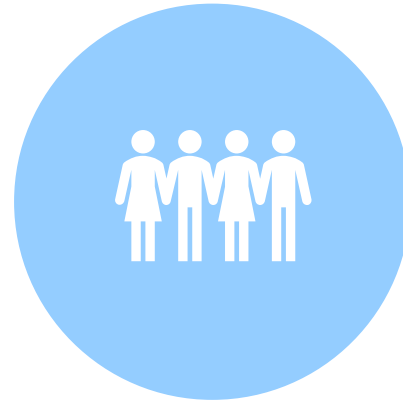
Professor Susan Dennison



**CLINICAL PRACTICE
LEARNING
SPECIALIST FOR
YEARS 2 & 4**



**GUIDE, MENTOR, AND
PROVIDE EDUCATION TO THE
CLINICAL INSTRUCTORS
WHO TEACH YOU IN THE
CLINICAL PLACEMENTS**



**SUPPORT STUDENTS WHO
REQUIRE ASSISTANCE WITH
CLINICAL**



Your Future. | **Ready for More.**

Upcoming Important Dates for Fall 2026

Mandatory Transitions Orientation

Thursday September 3rd, 2026

9:30am-12:00pm

Live Virtual – Microsoft Teams

Mandatory Year 3 Lab and Clinical Orientation

Tuesday September 8th 2026

1:00-5:00pm

Live Virtual – Microsoft Teams



Your Future. | **Ready for More.**



**I am committed to
excellence.**

**I change lives and
advance healthcare.**

**I am the future
of nursing.**

I am a Sigma nurse.

Sigma Theta Tau International
Honor Society of Nursing



**DEVELOPING
NURSE
LEADERS IS
WHAT WE DO.**

Join us in changing lives and
advancing healthcare.

Eligibility:

1. have completed 1/2 (one half) of the nursing curriculum (3rd year)
2. rank in the highest 35 percent of the graduating class
3. meet the expectation of academic integrity

To request an application please contact: Felicia Varacalli
varacalf@uwindsor.ca

Other inquiries: sttitaupsilon@hotmail.com



<https://www.facebook.com/sigmatauupsilon>



<https://twitter.com/tauupsilon>



https://www.instagram.com/sigma_tauupsilon/

Follow us:

Student Accessibility Services

Joyceln Lorito

Accessibility Advisor and Learning Strategist

What we do

- Academic Accommodations
- Testing Accommodations
- Learning Strategies
- Assistive Technology
- Executive Functioning Support

Did you have Accommodations at your previous institution?

1. Fill out an intake form at www.uwindsor.ca/sas
2. An advisor will be assigned to you and reach out to make an appointment
3. Gather your medical information from your previous institution to be accommodated here at the University of Windsor



What if I don't have Medical Documentation?

- Fill out an intake form www.uwindsor.ca/sas
- An advisor will meet with you and help you to get medical documentation filled out



Other Supports Offered

- Executive Functioning supports through the **Learning Strategist**
- Free Learning Strategies from the **Learning Strategist** by appointment **ONLY**
- **Assistive Technologist** support by appointment **ONLY**
- **"How to"** group sessions
- Find out more when you speak with your **Accessibility Advisor**

Myths - debunked

"If I am accommodated, my employer will know and I won't be hired."

- Your employer does not need to know that you received academic accommodations

"When I graduate it will say that I had accommodations during my degree process."

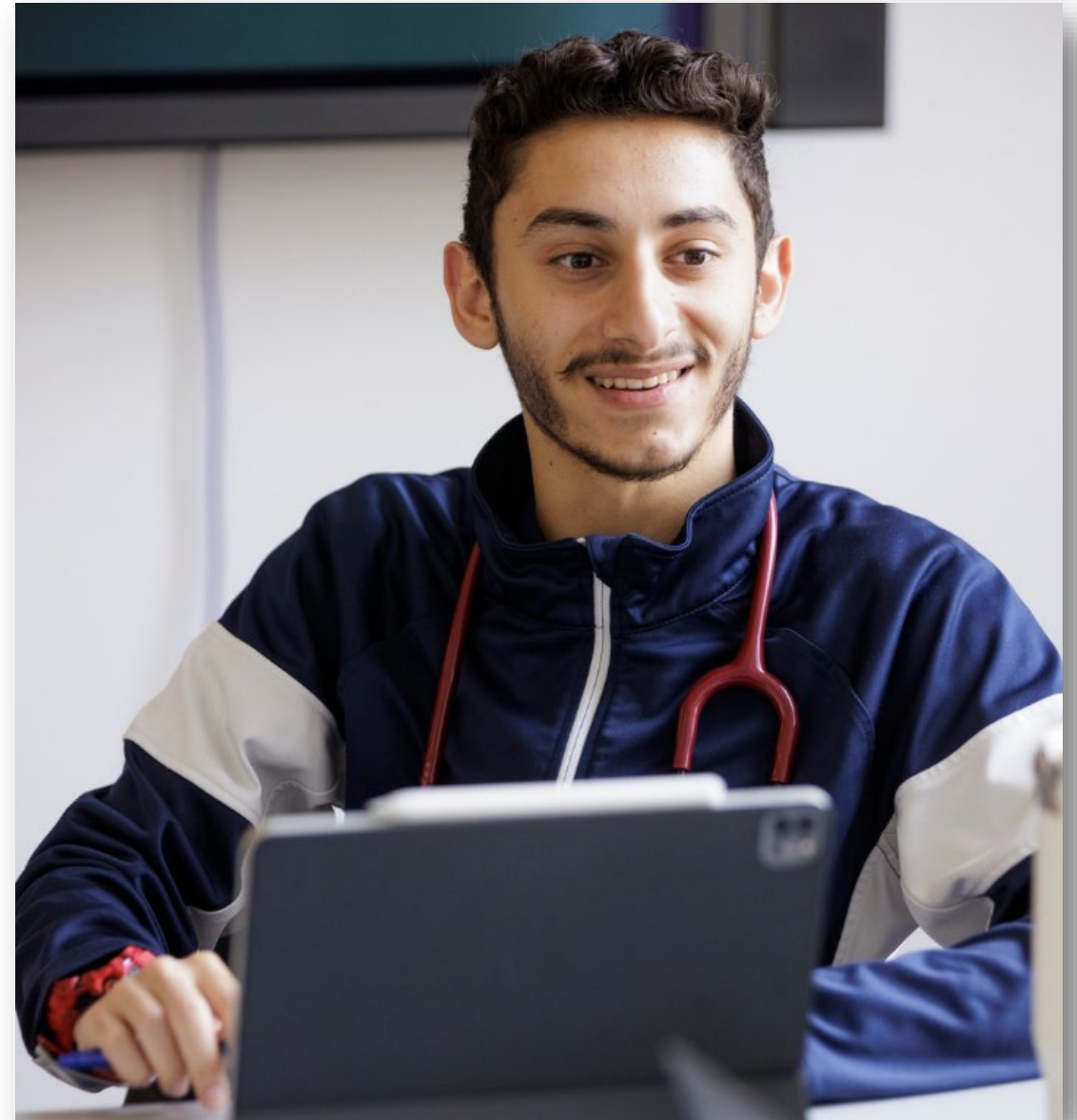
- Your degree will look the same as everyone else's. There is no mention of being registered with SAS on your degree



Academic Advising & Student Success

**Prof. Fran Meloche, MScN RN, PN
Student Success Coordinator
Sessional Instructor**

Email: fmeloche@uwindSOR.ca



Your Future. | **Ready for More.**



Nursing Student Support Centre

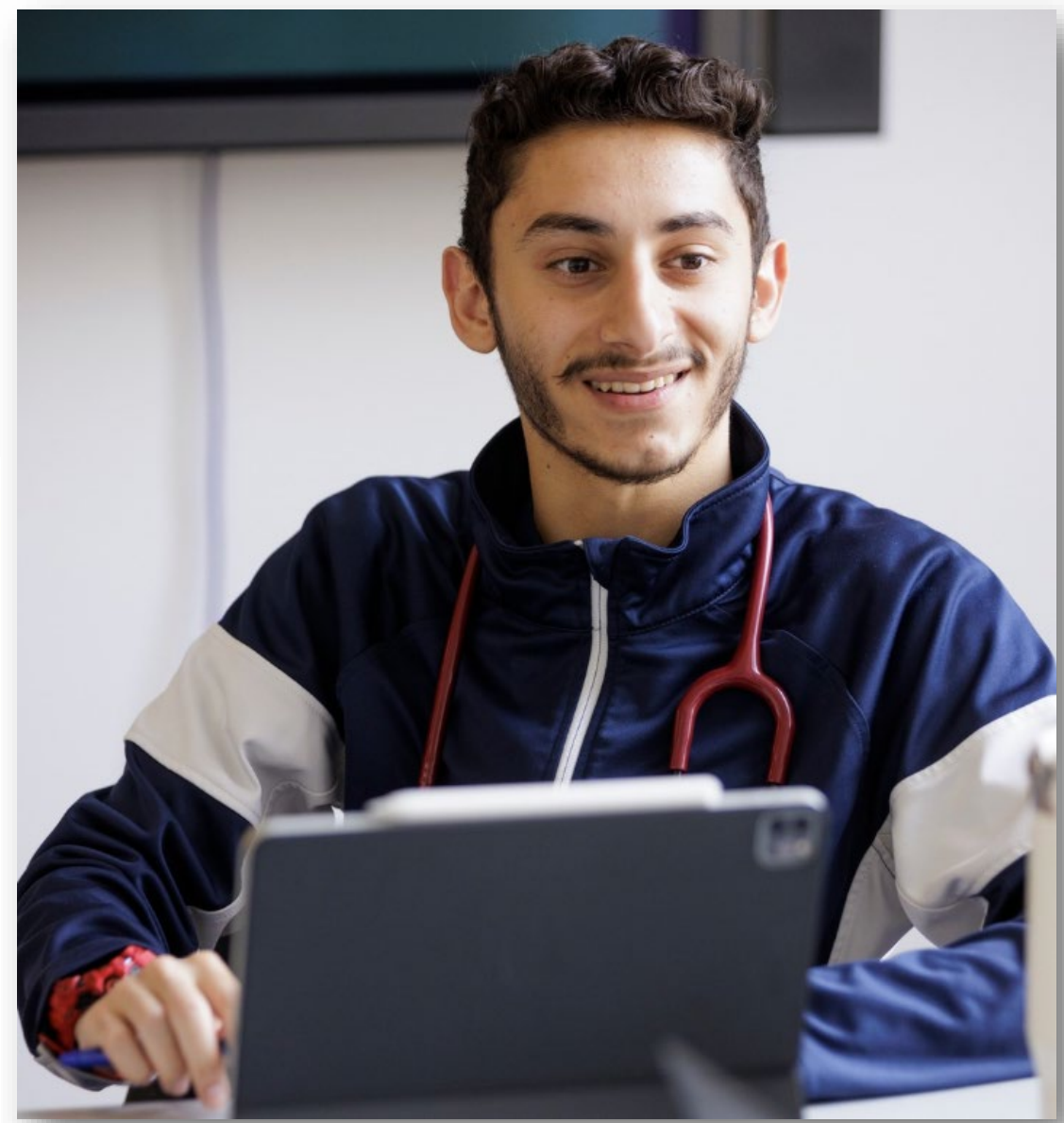
Brightspace



Nursing Student Support Centre
NSSC_26



Nursing Career Exploration & Professional Development
NCF_26



Your Future. | **Ready for More.**



Academic Advising

- Academic planning, course overload requests, advanced standing
- Transcript, degree requirements or progress report questions
- Struggling with a course
- Referrals for support services (on campus & with nursing)
- Program Regulations*
- Course Appeals
- Career pathway advising
- LEAD program / volunteer information

Student Success Programs:

- Early Intervention
- Tutor-Match
- Returning Student Program

To book an advising appointment (virtual or in-person):

- Online Booking; E-mail fmeloche@uwindSOR.ca or nurse@uwindSOR.ca

Academic Advising
Booking Link



Your Future. | **Ready for More.**



Support Services.. We are all here to help YOU!

- **Student Success Programs**
- **Peer Mentor Program**
- **Course Professors, GAs, TAs, and Staff**
- **Clinical & Lab Instructors**
- **Clinical Therapist for Counselling**
- **Nursing Society, UWNS, & other nursing clubs**
- **Campus supports**



Visit: Lots of Support Services on Campus

Link for Support Services:

<https://www.uwindsor.ca/156/lots-student-support-services>

University of Windsor > Current Students > Student Support Services

Student Support Services

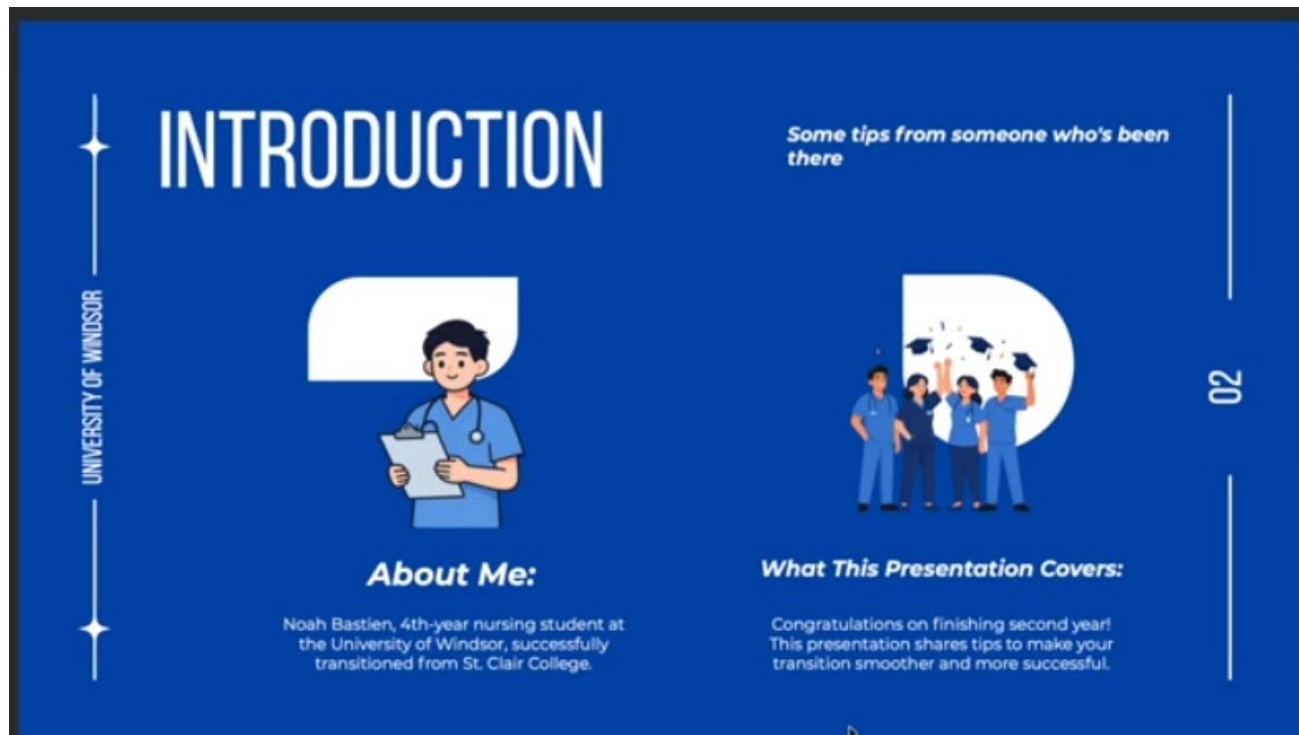
- > Academic Support
- > Career Development, Experiential Learning, Volunteering
- > Enrolment Services
- > Health & Wellness
- > Living Support
- > Orientation & Transition
- > Social/Cultural Support
- > Other Services



Your Future. | Ready for More.

Tips to Transition Successfully!

- Noah Bastien, Year 4 Nursing Student
(Click on image to access Video)



Your Future. | Ready for More.



Getting Organized!

Resources for Current Students



Your Future. | **Ready for More.**

Important Dates: Sync your Calendar!

<http://www.uwindsor.ca/registrar/events-listing>



University
of Windsor

FUTURE STUDENTS

ask.UWindsor

GIVE TO UWINDSOR



MENU



Office of the Registrar

Home

Contact Us

General Information

Timetable Information

UWinsite Student

Request a Transcript

Registration Information

Grade Processing

Service Fees

Transfer Students (Undergraduate)

Academic Calendars

[UWindsor Home](#) > [Office of the Registrar](#)

Important Academic Dates

Jun 9th, 2026	GRAD: Post-defence Deposit deadline for Phase II ...
Jun 9th, 2026	REVISED: Financial Drop Date - Full Summer 2026 (12-week)...
Jun 13th, 2026 to Jun 21st, 2026	Reading Week for Full Summer 2026 (12 week) courses: Jun 13 - 21
Jun 15th, 2026	Last Day of Inter-Session 2026 (6 week) Classes
Jun 15th, 2026	Make up date for Victoria Day Holiday Classes...
Jun 16th, 2026 to Jun 17th, 2026	Pre-examination study Day (Jun 16 - 17) - Intersession 6-wk
Jun 18th, 2026 to Jun 20th, 2026	Final Exams for Inter-Session 2026 (6 week): June 18 - 20
Jun 22nd, 2026	First Day of Classes: Summer 2026 Session (6 week)

UPCOMING EVENTS

GRAD: Post-defence Deposit deadline for Phase II ... Tue, 06/09/2026
REVISED: Financial Drop Date - Full Summer 2026 (12-week) ... Tue, 06/09/2026
Reading Week for Full Summer 2026 (12 week) courses: Jun 13 - 21 Sat, 06/13/2026
Last Day of Inter-Session 2026 (6 week) Classes Mon, 06/15/2026
Make up date for Victoria Day Holiday Classes ... Mon, 06/15/2026

[VIEW EVENT CALENDAR](#)



Your Future. | Ready for More.



UWinsite Student Account Set-up

- **Receive Student Number & PIN**
- Activate UWinsite Student Account & Extend UWIN Account
- Plan Courses (Validation) – add to shopping cart
- **Enroll/Register in Courses**
- **Check Fall 2026 Student Schedule**
- **Verify grades are accurate on transcript (end of Sept)**



Grades & Transfer Credits

Additional Requirements

Overall Requirement Not Satisfied: Additional Requirements [RQ 20256]

Statistics Requirement

Satisfied: Complete one of the following: [LN 10]

- **Units:** 3.00 required, 3.00 used

Courses Used

Term	Subject	Catalog Nbr	Course Title	Grade	Units	Type
F2022	SOSC	2500	Basic Quantitative Methods	T	3.00	TR

Other Requirements

Satisfied: Complete the following: [LN 20]

- **Units:** 9.00 required, 9.00 used

Courses Used

Term	Subject	Catalog Nbr	Course Title	Grade	Units	Type
F2022	BIOM	1073	Intro to Medical Microbiology	T	3.00	TR
F2022	PSYC	3390	Health Psychology	T	3.00	TR
W2025	NURS	4999	Nursing Specialty Option(T)	89	3.00	EN

NURS 4999 has been directed to this line.

Plan Level Exception: Course Directive

Exception to allow NURS 4999, Indigenous Health, in lieu of PHIL 1350

RG 11029, RQ 20256, LN 20

Jan 28, 2025 ch #15142



Your Future. | Ready for More.



Chatham Opportunities:

- Clinical Placements
- Exam writing
- Experiential Lab and Sim



An email was sent to have you request this option if you started your nursing at St. Clair Chatham



Your Future. | **Ready for More.**



Fall 2026 Registration – How to Register

- NURS 3542 Clinical Practicum IV (UW Staff)
- NURS 3551 Experiential learning lab V
- NURS 3830 Adult health and Health Alterations III
- NURS 3940 Nursing Care of Children and Youth
- NURS 3950 Nursing Research
- NURS 3960 Community Health Nursing



Need Help?

- [ask.UWindsor](#): step-by-step knowledge-based articles & reach out for help!
- [Registrar's: Admission & Records Officer](#)
- **General Inquiries:**
nurse@uwindsor.ca
- **Academic / Program Advising:**
fmeloche@uwindsor.ca

University
of Windsor

ask.UWindsor



Find an answer



Ask a question



Request info

Find articles for

all students

all topics

how to re

Published 07/03/2018 12:36 PM | Updated 06/05/2024 11:45 AM

How do I register for classes?

First-Year Students

You may start to **register** in late May for Fall semester as long as UWindsor has received your confirmation of our Offer of Admission.

You'll need to log in to [UWinsite Student](#) with your yourUWinID@uwindsor.ca and UWin Account password to start **registering** for **classes**.

You can find the steps to **register** for your **classes** at: [How do I register for classes?](#) The [Plan Your Program](#) site also lists courses available to first-year students, provides a guide to most first-year course selections and outlines options or recommendations for other courses.

Note: It is important to **register** early to get a better chance of getting into the courses that you want to take. You may make changes to your courses, up to the tenth day of **classes** as long as there is space.



Your Future. | Ready for More.

Winter 2027 Courses

- NURS 3130- Professional Nursing III:
Leadership and Management in Nursing
- NURS 3552 Clinical Practicum V
- NURS 3561 Experiential Learning Lab VI
- NURS 3840 Adult Health and Health
Alterations IV
- NURS 3970 Health issues in Gerontology
- NURS 4XXX Indigenous Health
- NURS 3632 Consolidated Practicum III

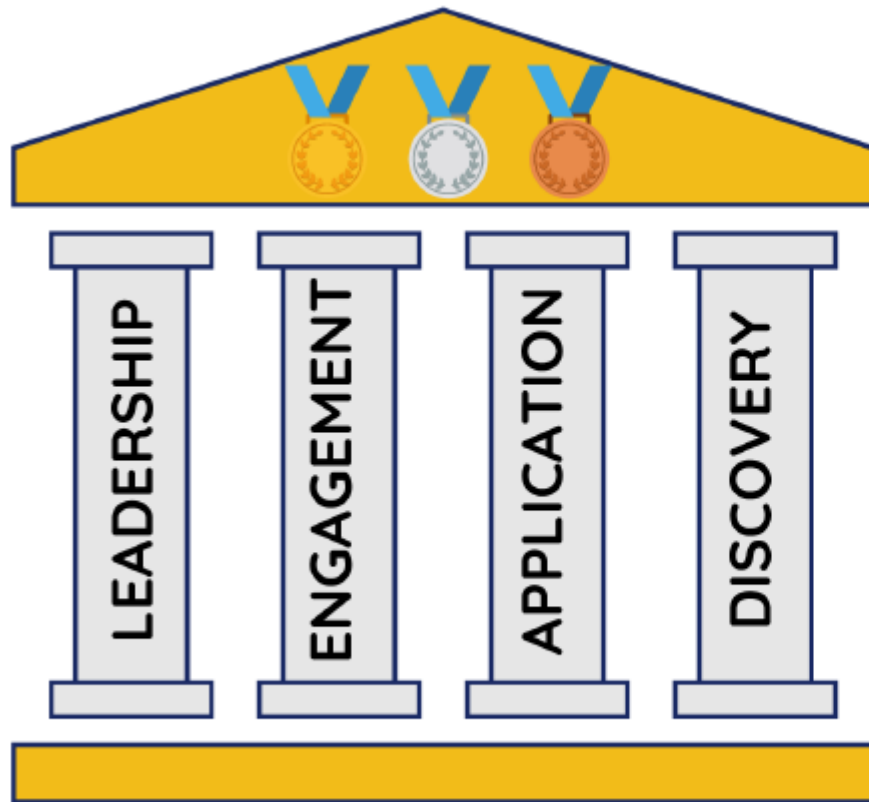


*BScN Course
Sequence Guide*



Your Future. | **Ready for More.**

LEAD Medallion Program



The Program

The LEAD Medallion Scholars Program exists in a select few faculties at the University of Windsor. It recognizes the extracurricular and co-curricular achievements of students. The Nursing LEAD Medallion Scholars Program honours graduating students for their excellence in Leadership, Engagement, Application, and Discovery. Based on their achievements, students can earn a bronze, silver, or gold medallion, awarded before convocation to wear as they cross the stage.



Welcome to UWindsor! #lancerproud



Dr. Kathy Pfaff

**Associate Dean, Graduate
Programs and Research**

kpfafe@uwindsor.ca



Your Future. | **Ready for More.**

We are Nursing



The Nursing Research Collaborative

WHAT WE DO...

We advance health through excellence and innovation in nursing research and scholarship. We equip our people as scholars who create and translate evidence that *strengthens communities, transforms healthcare, and shapes the future of nursing practice and education* locally, nationally and around the globe.

HOW TO JOIN US:

- Create a statement of interest
- Get a letter of support from a faculty member
- Upload to the application site



...GET INVOLVED

...BECAUSE

Nursing research and scholarship improves people's health and drives decisions that improve health care for all.



Your Future. | Ready for More.

International Exchange Opportunities

- Sweden- Fall of 4th Year
- Please contact Prof. Natalie Bownes for information: nbownes@uwindsor.ca
- You can also visit:
•<https://www.uwindsor.ca/studentexchange/302/student-exchange-program>



Your Future. | Ready for More.



Work & Volunteer

- Ignite Work Study & VIP Community Service-Learning Experiences; Living Well Lancers; Connecting4Success
- Nursing Society – number of positions available
- UWNS – University of Windsor Welcomes Nursing Students (Club)
- Mental Health & Wellness Outreach Team
- Canadian Black Nurses Alliance (CBNA) – Windsor Chapter
- Nursing Students in Pediatrics
- Student Medical Response Services - SMRS
- IHI Open School Workshops and Professional Development
- WESpark – Research Collaboration in Windsor-Essex County
- UNE positions – WRH had interviews at the University last fall, may do something similar this year.
- Faculty of Nursing Job Fair – 25+ Nursing Employers – end of Nov.
- Watch Brightspace Announcements – Nursing Student Support Centre & Employer Information for new opportunities



Student Health, Counselling & Wellness

Laura Little, MSW, RSW
Clinical Therapist, Faculty of Nursing

Nursing Student Support Centre
Room 201-A
Toldo Health Education Building



Your Future. | **Ready for More.**



It is **normal** to need support when facing a challenge or experiencing painful emotions.



Asking for help is **always strong** and brave, it is never weakness.



By reaching out for support, you are taking **care** of yourself and working to find a way through the challenge. This is **resilience** in action.



At UWindsor, we want you to tell us if you are struggling so we can **support** you. There are **safe**, caring professionals who are here to help. You are not alone.



When should I seek professional help for my mental health?

“I’m struggling... but I’m not sure if I need counselling”

You could benefit from student health, counselling & wellness services if:

- You are having difficulty with your daily living routine (trouble sleeping, eating, attending classes, feeling isolated etc.)
- You are having a hard time coping or adjusting to changes
- You are struggling with difficult or upsetting thoughts or feelings; or there is a troubling situation you are dealing with.

Students make appointments for many different reasons:

- *Excessive stress*
- *Panic and/or Anxiety*
- *Depression*
- *Relationship issues (family, roommates, significant others)*
- *Processing difficult events*
- *Boundaries*
- *Substance use*
- *Disordered Eating*
- *Abuse (verbal, emotional, physical, sexual)*
- *Trauma*
- *Grief*
- *Suicidal thoughts*





How do I access services?

The Student Counselling Centre offers single session (one-off) appointments, groups and short-term therapy. If you would like to access any of these options, follow the 3 easy steps below.

1. Contact the [Student Counselling Centre](#) by email, phone or in person:
 - 519.253.3000 ext. 4616
 - scc@uwindsor.ca
 - CAW Student Centre 2nd floor, room 293 (Mon-Fri 8:30am-4:30pm)
2. Our office administrators will give you confidentiality & informed consent documents to complete. Services are offered in-person, via secure videoconference, or by telephone (*groups are in person or online)
3. After the forms are completed, our admin team will schedule you in!

Our services are confidential and offered at no additional cost to students currently enrolled at the University of Windsor



Your Future. | **Ready for More.**

You Deserve Support - We're Here for You!

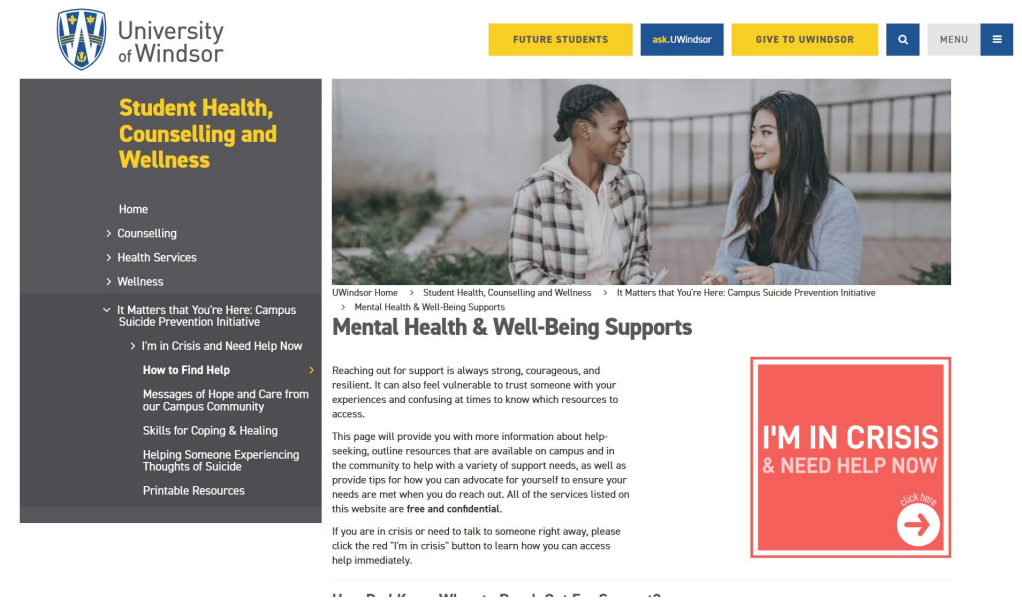
The University of Windsor has many mental health & wellness resources available to you.

Visit the Student Health, Counselling & Wellness website at this link:

<https://www.uwindsor.ca/wellness/node/340/resources>

for more resources including:

- On & off campus resources
- 24/7 Crisis & Urgent supports
- Online self-help modules



University of Windsor

FUTURE STUDENTS ask.UWindsor GIVE TO UWINDSOR MENU

Student Health, Counselling and Wellness

- Home
- > Counselling
- > Health Services
- > Wellness
- > It Matters that You're Here: Campus Suicide Prevention Initiative
 - > I'm in Crisis and Need Help Now

How to Find Help

- Messages of Hope and Care from our Campus Community
- Skills for Coping & Healing
- Helping Someone Experiencing Thoughts of Suicide
- Printable Resources

Mental Health & Well-Being Supports

Reaching out for support is always strong, courageous, and resilient. It can also feel vulnerable to trust someone with your experiences and confusing at times to know which resources to access.

This page will provide you with more information about help-seeking, outline resources that are available on campus and in the community to help with a variety of support needs, as well as provide tips for how you can advocate for yourself to ensure your needs are met when you do reach out. All of the services listed on this website are **free and confidential**.

If you are in crisis or need to talk to someone right away, please click the red "I'm in crisis" button to learn how you can access help immediately.

I'M IN CRISIS & NEED HELP NOW

click here



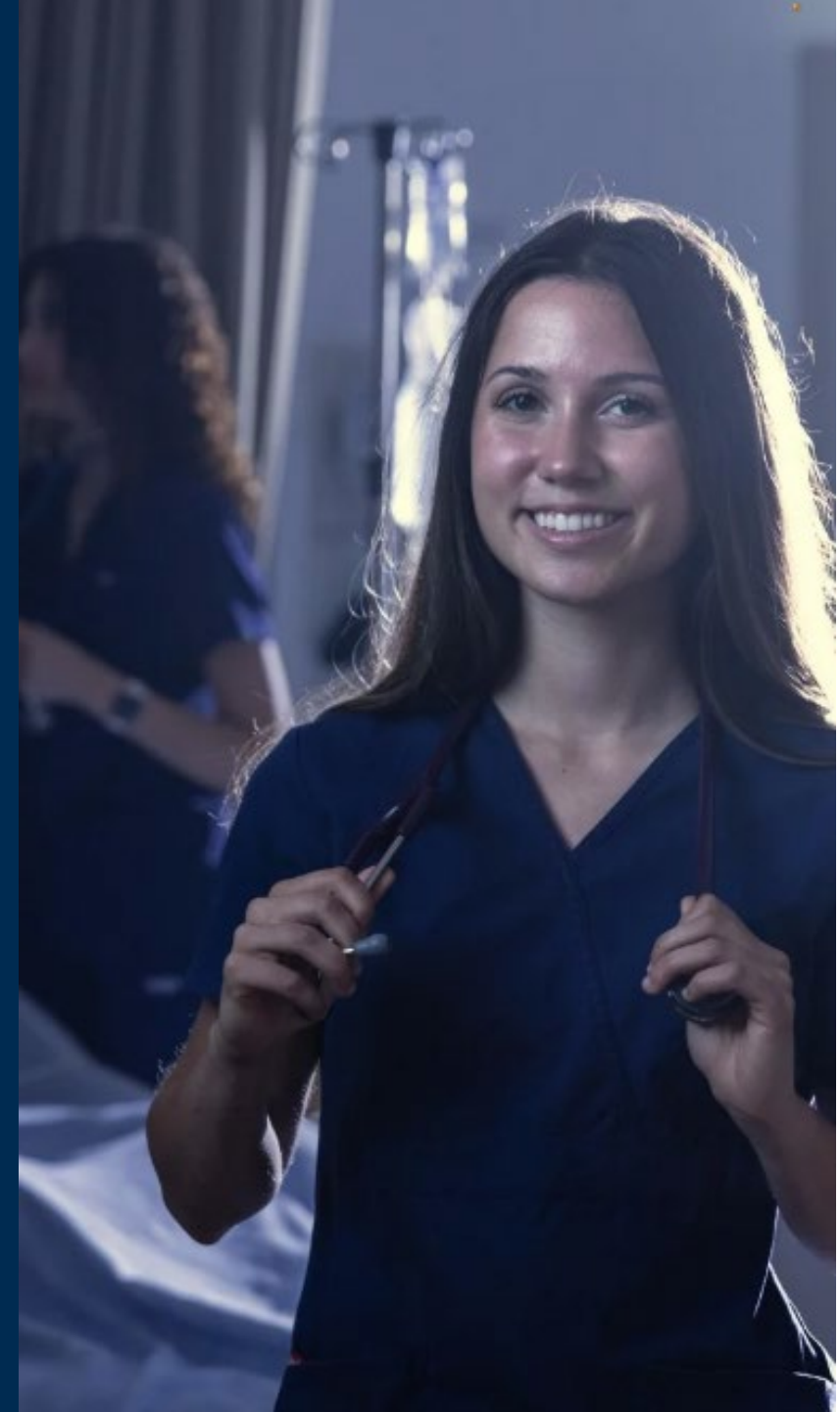
Your Future. | Ready for More.

Year 3 Clinical Placements

- Types of Clinical & floors/units available
- Clinical placement process



Your Future. | **Ready for More.**





Clinical Opportunities

- Medical-Surgical
- Cardiology
- Neurology/ Neurosurgery
- Mental Health
- Long-Term Care
- Palliative
- Complex Care
- Oncology
- Maternal Newborn
- Pediatrics OR School Health



Your Future. | **Ready for More.**

Clinical Placement Policy

- Students are expected to complete clinical placements in Windsor, Essex County, or Chatham-Kent County.
- Students are responsible to arrange their own transportation to and from placements (e.g. vehicle, public transit, car-pool, car share, etc.) and for any costs of travel and accommodation (if required).





Conflict of Interest Policy

- Please contact the Clinical Placement Coordinator as soon as possible if you think you have identified a conflict in your clinical placement setting.
- You cannot work as an RPN or as a UNE on the floor where you are completing clinical.
- If you are working at a local hospital, please contact Susan Rotondi-Moore srotond@uwindSOR.ca to let her know where you are working.
- A conflict of interest may occur if a family member or someone you have a close personal relationship with:
 - Is part of your clinical group
 - Is employed on the unit where you are placed
 - Is your clinical instructor
 - Is the supervisor or manager on the unit
- More information can be found on our Faculty of Nursing website. (See Undergraduate Student Handbook).



Pre-Clearance Clinical Requirements



Up to date pre-clearance clinical information is found at this website:

<http://www.uwindsor.ca/nursing/375/pre-clearance-information-and-forms>

Due date: August 19th 2026



Your Future. | **Ready for More.**

Clinical Pre-Clearance Overview

- Hospitals and community agencies mandate that students meet specific medical and non-medical requirements.
- Students need to be cleared annually- University of Windsor is now using **Verified Synergy Gateway** to complete the screening process.
- Flexible appointment scheduling.
- Confidentiality and privacy maintained.
- Fees for screening available on the **Synergy ERV forms** found on the Pre- Clearance information link found on the main University of Windsor Nursing page.



Verified Synergy Account Setup



- **Activate and extend your uwindsor.ca email**
 - This must be completed before your **University of Windsor Synergy** account can be created.
- **Set up your Verified Synergy account**
 - You will receive an email from **Verified Synergy Gateway** with instructions on how to activate your **University of Windsor Synergy** account.
Important: The activation link is only valid for **48 hours**
If the link expires, contact srotond@uwindsor.ca to request a new activation email.
- **Save your login information**
 - Keep your username and password in a secure place for future access to your **University of Windsor Synergy** account.



Your Future. | **Ready for More.**

Medical Requirements

- Medical requirements are listed on the Year 2-4 ERV found at this link: [Pre-Clearance Information and Forms | Faculty of Nursing](#)
- Be sure you are using your **University of Windsor Synergy account**. We **do not** have access to your St Clair accounts.
- Carefully review the ERV so you have **all** the requirements prior to booking your Synergy appointment.



PRE-PLACEMENT REQUIREMENTS CHECKLIST	
MEDICAL REQUIREMENTS	Where to Upload in Verified
To avoid failing your clearance, please ensure your requirements are valid until the end of your consolidation placement!	
Tetanus/Diphtheria Documented proof of vaccination in the last 10 years.	Permit Form/Medical Documents
Pertussis - Documented proof of vaccination.	Permit Form/Medical Documents
Measles, Mumps, Rubella (MMR) - Documented proof of two vaccinations OR blood work results (within 5 years) showing immunity.	Permit Form/Medical Documents
Varicella - Documented proof of two vaccinations OR blood work results (within 5 years) showing immunity.	Permit Form/Medical Documents
Hepatitis B Blood work results (within 5 years) showing immunity is mandatory. If blood work results show you are not immune, then proof of 2 doses of a primary series and one dose of a secondary series is required to obtain a conditional pass. Synergy will send you instructions on how to remove the condition. If you have not started your primary series, a minimum of 2 doses will be required to receive a conditional pass. Synergy will send you instructions on how to remove the condition.	Permit Form/Medical Documents
Tuberculosis (Mantoux) – 1 Step TB Skin Test Documented proof of a baseline 1-step TB Skin Test (TST). A medical follow-up to obtain a chest x-ray is required if a person has EVER had a documented positive TB Skin Test. Chest Xray valid for 2 years.	Permit Form/Medical Documents

Non-Medical Requirements

- The non-medical forms are posted here: [Pre-Clearance Information and Forms | Faculty of Nursing](#)
- Please note how long the requirements are valid.
- Ensure all requirements are completed before you schedule your Synergy clearance appointment

NON-MEDICAL REQUIREMENTS	
<i>* Students with certifications/requirements expiring during the placement period must renew (before expiry) and provide updated documentation to Verified by Synergy Gateway Inc. to continue to be eligible for placement. This will require another ERV Review and there will be a charge for this Review.</i>	
Vulnerable Sector Search (VSS) Your local police department can provide a VSS. Valid for 1 year	VSS
Attestation of Notification of Change in Criminal Record Status - Required Valid for 1 Year	VSS
Mask Fit Testing Valid for 2 years. Students must be fit for one of the following N95 models: 1860s, 1860, 1870+, 8210.	Mask Fit Test Certificate
Canadian CPR Level BLS or HCP – IN PERSON (Theory portion can be taken on-line / practical portion must be in person) Valid for 1 year (regardless of expiry date on the card)	CPR Certificate
UNIVERSITY OF WINDSOR Refresher Non-Violent Health Care Crisis Intervention and Physical Techniques Training bundle course from the Safe Management Group (SMG) – Must be the University of Windsor SMG. No substitutions. Both courses must be completed within 30 days of each other. Valid for 1 Year (https://windsoruniversity-safemanagement.talentlms.com/catalog/index)	Health & Safety Certificates Must upload both certificates
WSIB Student Declaration Ministry of Training, Colleges & Universities Work Safety Insurance Board (WSIB) coverage policy document; student signature required. Available on the Undergraduate Student Information site under “Pre-clearance Information and Forms” ERVs https://www.uwindsor.ca/nursing/375/pre-clearance-information-and-forms - Valid for 1 Year. **Both pages must be uploaded to Synergy	Consent Form
Student/Instructor Verification of Health Status **Be sure to tick the box indicating whether you have a Latex allergy. Required – Valid for 1 Year	Consent Form



Important Pre-Clearance Information :

- **Synergy Due Date: August 19, 2026**
 - Applies to all Year 2 & 3 students completing clinical placements at any point during the **2026–2027 academic year**
- **School Year-Based Clearance:**
 - You will only pass your synergy clearance if **ALL** clearance documents do not expire prior to the **LAST** day of your Year 3 consolidation date which is **May 5th 2027**.
- **Vulnerable Sector Screening (VSS):**
 - Apply early as processing can take **8–10 weeks**.
- **Annual CPR-** Must be a Canadian **BLS or Health Care Provider** level course, **in person or hybrid** (theory online and practical portion in person)
- **Annual SMG Health Care Crisis Intervention Training and Online Physical Techniques**
 - You must take the **University of Windsor** training courses, certificates from any other agency or hospital are no longer accepted.
 - SMG has stated that these courses are required to be taken **no more than 30 days apart** to be valid.
 - <https://windsoruniversity-safemanagement.talentlms.com/catalog/index>
- **Synergy review timeline:**
 - Review results are returned within approximately **48 hours**



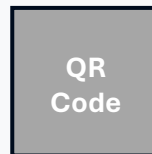
Synergy Results

- Please check the results from your Synergy appointment.
- If you have **PASS** congratulations!
- If you have a **FAIL** or **PENDING** status, please carefully review the email you were sent outlining what you will need to submit to obtain your **PASS**.

Student Information

Full Name ██████████
Student ID ██████
School Name University of Windsor
Program ██████████
Term ██████

Compliance Status Pass
Valid Until Jan 2, 2027





Mandatory Orientations

Mandatory Transitions Orientation

Thursday September 3rd, 2026

9:30am-12:00pm

Live Virtual – Microsoft Teams

Mandatory Year 3 Lab and Clinical Orientation

Tuesday September 8th 2026

1:00-5:00pm

Live Virtual – Microsoft Teams



Your Future. | **Ready for More.**

What is the Clinical Learning Centre (CLC)?

- Lab space on campus and virtually
- Resource for students, faculty, and staff
- Provides learning opportunities through appointments with peer mentors (in person and virtual) and open lab practice.
- A safe, judgement free atmosphere to ask questions about skills, clinical assignments, and much more.
- The CLC consists of the General (GEN) nursing lab and the Simulation (SIM) nursing lab.





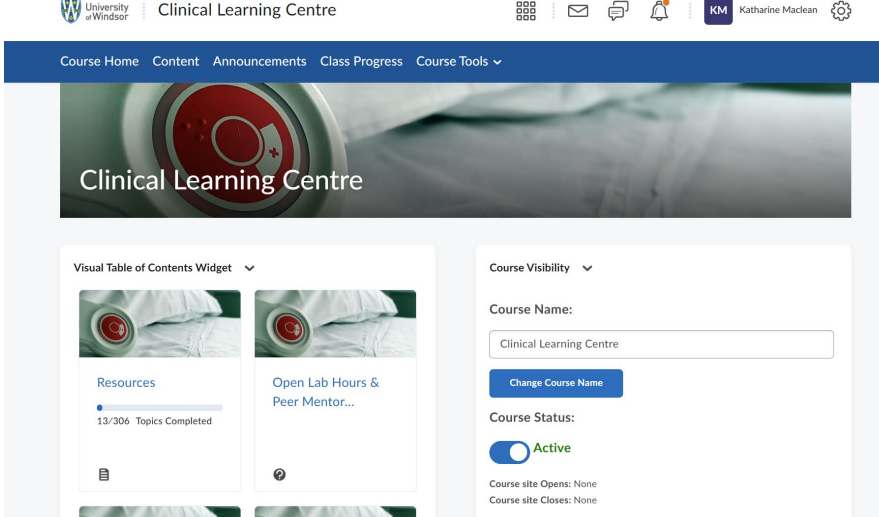
General Nursing Lab

- The general lab is located in Toldo & the Medical Education Building (MEB). These two buildings are attached.
- The general lab consists of:
 - Main Office (Toldo 210)
 - 6-bed practice lab with new mid-fidelity manikin (Toldo 212)
 - 6-bed nursing skills lab including a medication room with a PYXIS machine (Toldo 214)
 - 4-bed practice lab (Toldo 209A)
 - 2-bed practice lab (Toldo 209B)
 - 7-bed practice lab (MEB 2128)
 - 8-bed experiential learning lab (MEB 3129)
- 2 primary care rooms with viewing station (next to MEB 3129)



General lab information

- The general lab is open for a variety of hours to meet nursing students' needs.
- We book peer mentor appointments so you can have one on one time with a peer mentor.
- We offer virtual appointments.
- The general lab provides support, education, and expertise to assist nursing students to be successful with hands on skills at their clinical settings.
- Information is posted on the CLC Brightspace site.



The screenshot displays the Brightspace user interface for the Clinical Learning Centre. At the top, the University of Windsor logo and 'Clinical Learning Centre' are visible. The navigation bar includes 'Course Home', 'Content', 'Announcements', 'Class Progress', and 'Course Tools'. The main content area features a 'Visual Table of Contents Widget' with two cards: 'Resources' (showing 13/306 Topics Completed) and 'Open Lab Hours & Peer Mentor...'. To the right, the 'Course Visibility' settings are shown, including a 'Course Name' field (Clinical Learning Centre), a 'Change Course Name' button, and a 'Course Status' toggle set to 'Active'. Below the status, it indicates 'Course site Opens: None' and 'Course site Closes: None'.





General Lab Members

Clinical Lab Coordinator:
Lacey Rivest MN RN BScN
CHPCN graduated from the
University of Windsor BScN
program in 2007 and
University of Windsor Master
of Nursing program in 2023.

Peer Mentors: 3rd and 4th year
nursing students hired to work
in the general lab. They help
the students with hands on
skills, answer questions, and
support the nursing students
in all levels.





Resources

- Clinical Lab Coordinator and Peer Mentors through virtual & in-person appointments and email.
- Open lab for practice
- Brightspace site: Clinical Learning Centre
- CLC Brightspace site has online resources, skills videos, announcements regarding hours and appointments, lab expectations, and much more information.
- Instagram page: **uwinclc**
- *Add an email signature to your uwin email
 - with your name
 - year of study
 - other important information you would like.



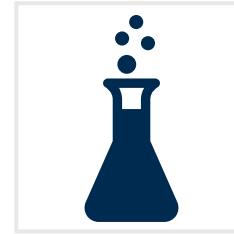
Experiential Lab Guidelines



No food or drinks in any lab rooms



Respect the equipment and property in the rooms



No pens around any simulation equipment or lab models



Lab guidelines posted on the CLC site



Your Future. | **Ready for More.**



Simulation Lab

- Students in all levels participate in a SIM experience each year.
- SIM is an amazing experience where you will learn and collaborate with your team to care for your patients.
- It builds confidence and competence for future clinical practice.



Simulation Lab

- The SIM lab consists of:
 - 1-bed palliative care room with viewing room (MEB 3117)
 - 4-bed simulation lab with viewing room and debriefing area (MEB 3127)
 - 1-bed simulation lab (MEB 3134)
 - 3 faculty offices





Simulation Lab Members

AAS II - Learning Specialist,
Simulation Learning: **Amanda
McEwen** RN, MScN, BSc (Bio.),
CCSNE graduated from the
University of Windsor BScN
program in 2007 and University of
Windsor Master of Nursing Thesis
program in 2018.

Peer Mentors: Third- and fourth-
year nursing students employed in
the simulation lab. Peer mentors
receive specialized training to
support the delivery of simulation-
based learning experiences and to
guide students throughout the
process.

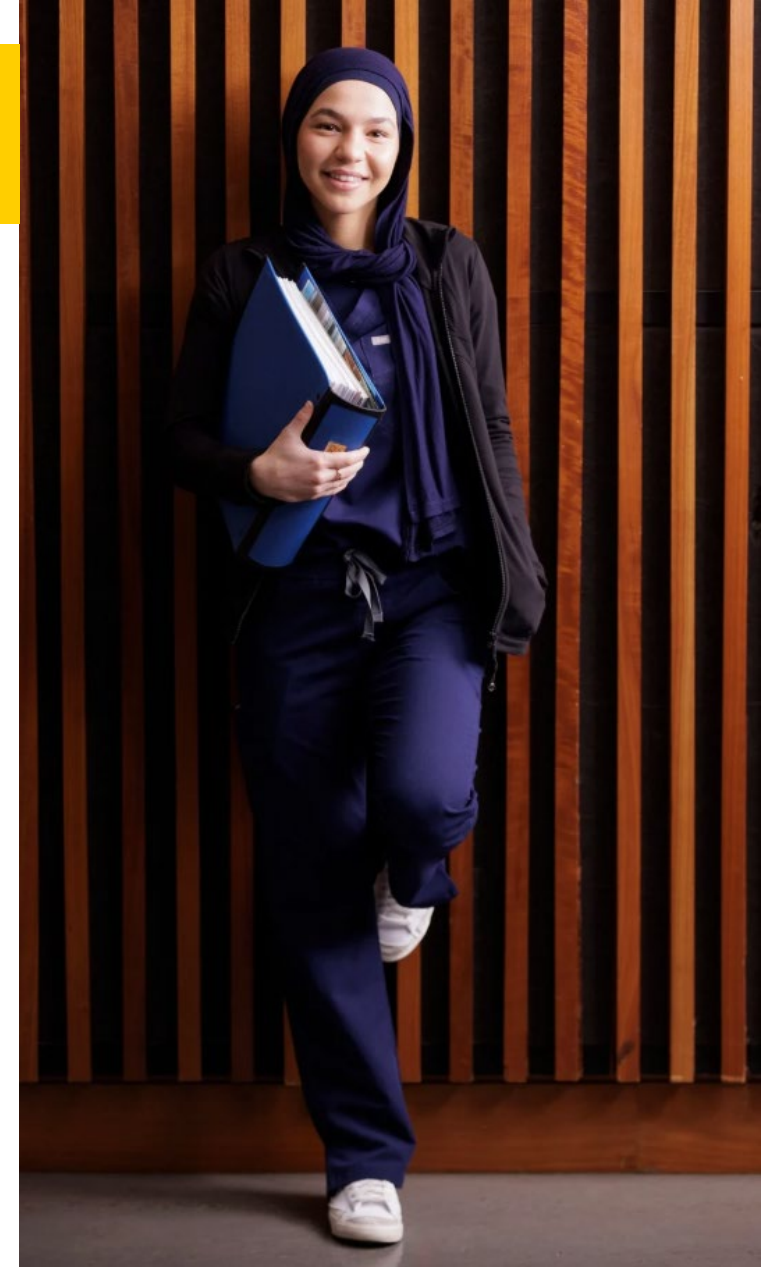


Peer Mentor Program

- 3rd and 4th year nursing students
- Hired into the lab to be a resource to students
- Work in either the General Lab or Simulation Lab

Duties:

- Assist with skill practice through virtual and in-person appointments
- Answer questions
- Observe and give feedback on technique
- Assist with organization of lab equipment and supplies
- Assist with lab setup for scheduled labs



Contact Us!



Brightspace site: Clinical Learning Centre

Email:
genlab@uwindSOR.ca

Office: Toldo Room 210

Instagram: [uwinclc](https://www.instagram.com/uwinclc)



Your Future. | **Ready for More.**

Canada
Centre



Toldo 210 (Lacey & Peer Mentor Office)



Your Future. | Ready for More.



Toldo 212: Practice Lab



Your Future. | **Ready for More.**



**Toldo 214:
Skills lab with
medication
room**



Your Future. | **Ready for More.**



Toldo 209A: Practice Lab



Your Future. | Ready for More.



Toldo 209B: Practice lab



Your Future. | **Ready for More.**



MEB 3134: Practice Lab



Your Future. | **Ready for More.**



MEB 3129: Experiential Learning Lab



Your Future. | Ready for More.



MEB: Primary Care Rooms



Your Future. | Ready for More.



MEB 3127: Large Simulation Suite



Your Future. | Ready for More.



MEB 3127: Simulation Debrief Room




Your Future. | Ready for More.



MEB 3117: Palliative Simulation Suite



Your Future. | Ready for More.

A photograph of a hospital simulation suite. A patient is lying in a hospital bed, covered with a white blanket. The room is equipped with various medical devices, including a monitor on a stand, a desk with a computer monitor, and a blue cart with a sink and various supplies. The room has white cabinets and a window with curtains. The text "MEB 3134: Simulation suite" is overlaid on the right side of the image.

MEB 3134: Simulation suite



Your Future. | Ready for More.



Mandatory Orientations

Mandatory Transitions Orientation

Thursday September 3rd, 2026

9:30am-12:00pm

Live Virtual – Microsoft Teams

Mandatory Year 3 Lab and Clinical Orientation

Tuesday September 8th 2026

1:00-5:00pm

Live Virtual – Microsoft Teams



Your Future. | **Ready for More.**



QUESTIONS?





**Thank you and
stay connected!**

**STAY
UPDATED**
FOLLOW US ON SOCIAL MEDIA

<https://www.uwindsor.ca/nursing/social-follow>



Your Future. | **Ready for More.**