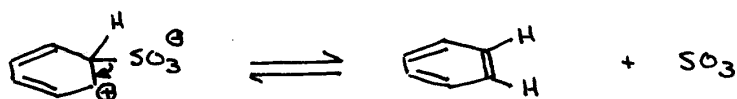
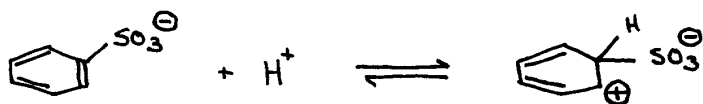
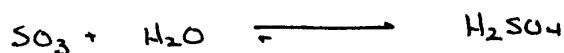




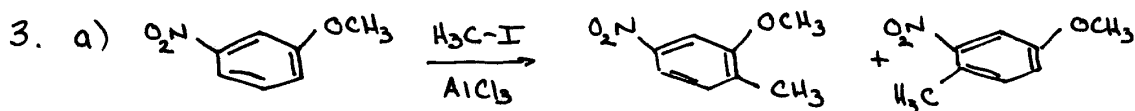
HIGHLY DISSOCIATED IN H₂O ∴ MUCH OF THIS



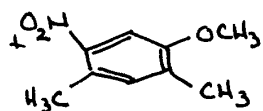
GROUP DEPARTING IS NEUTRAL ∴ GOOD EQUILIBRIUM



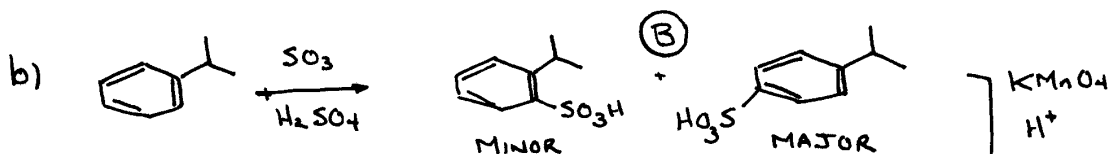
S₂ IS DESTROYED ∴ PULLS EQUILIBRIUM TO 'PRODUCT' SIDE BY LE CHATELIER'S PRINCIPLE



(A)

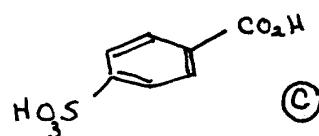


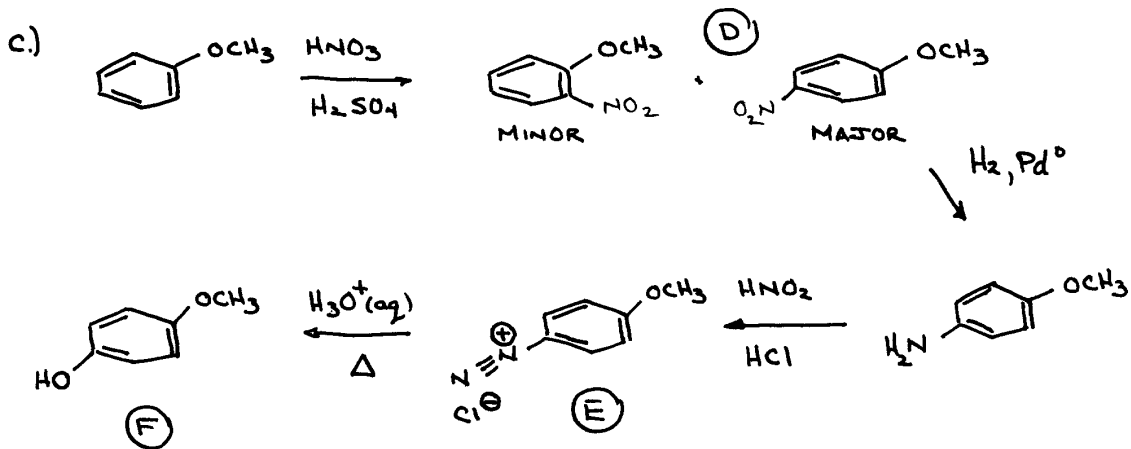
- OR SOME EVIDENCE THAT YOU RECOGNIZED POLYALKYLATION WOULD OCCUR



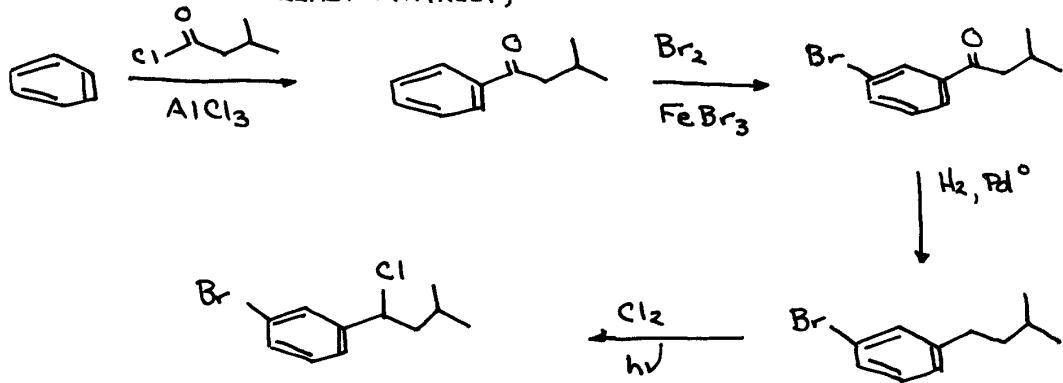
MINOR

MAJOR





4 a) GROUPS HAVE META RELATIONSHIP \therefore FIRST GROUP THAT GOES IN MUST BE A EWG (AT LEAST INITIALLY)



b) GROUPS HAVE PARA RELATIONSHIP \therefore 1ST MUST BE EDG

- BUT AMINO GROUPS DON'T WORK IN FRIEDEL-CRAFTS RXNS DUE TO HIGHLY BASIC LONE PAIR ON N - MUST 'PROTECT' AS AMIDE

