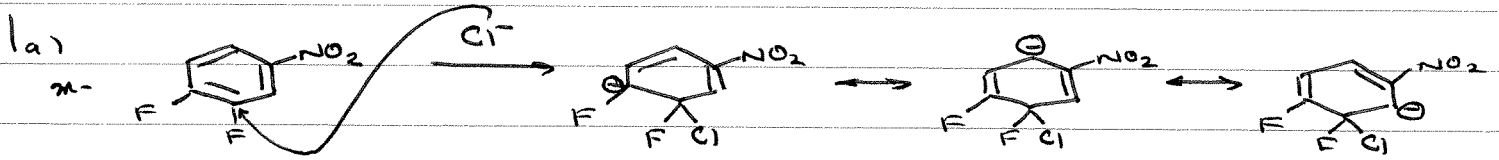
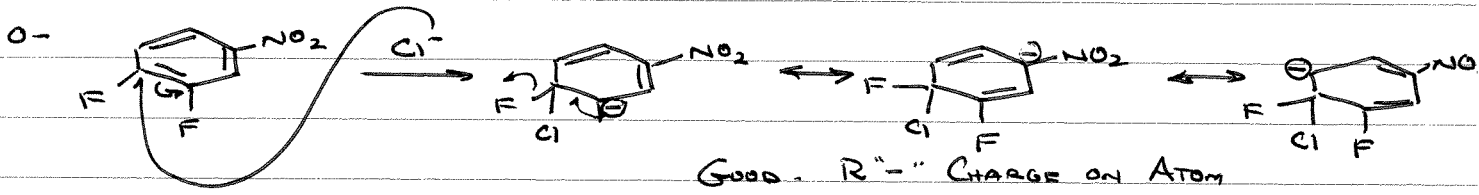


59-235
TEST # 2
SUGGESTED SOLUTIONS

W 2012

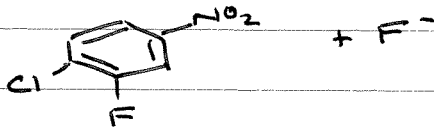


"-" CHARGE NEVER ON CARBON BEARING EWG - \therefore NOT FAVOURED

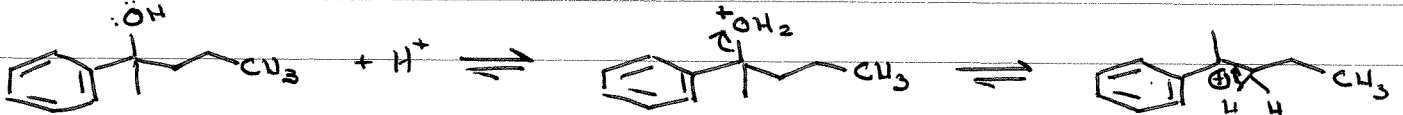


GOOD - "R" CHARGE ON ATOM

EWG - FAVOURED

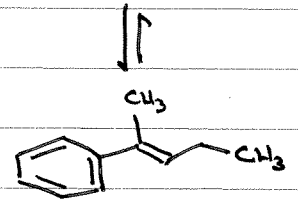


b)

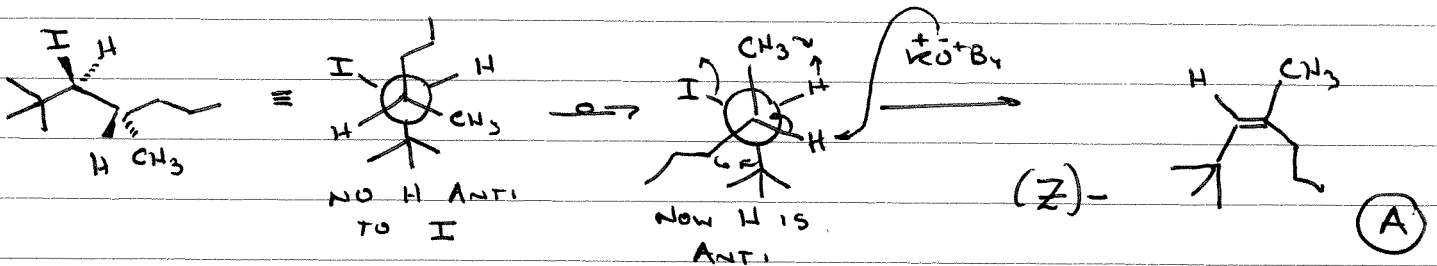


E1 REACTION

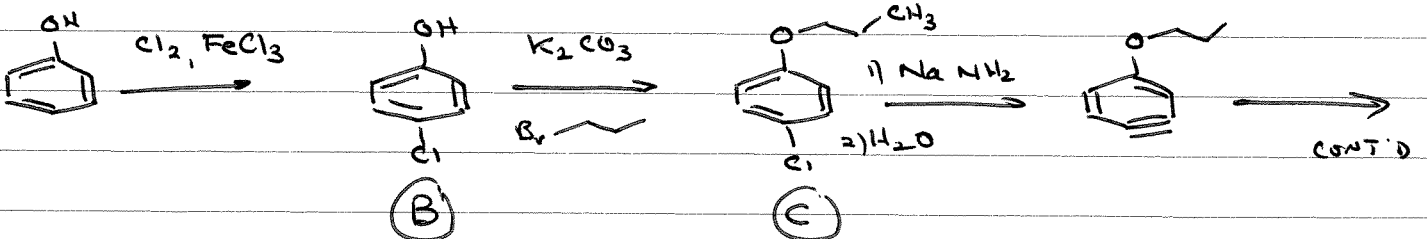
(E) - ISOMER
NORMALLY

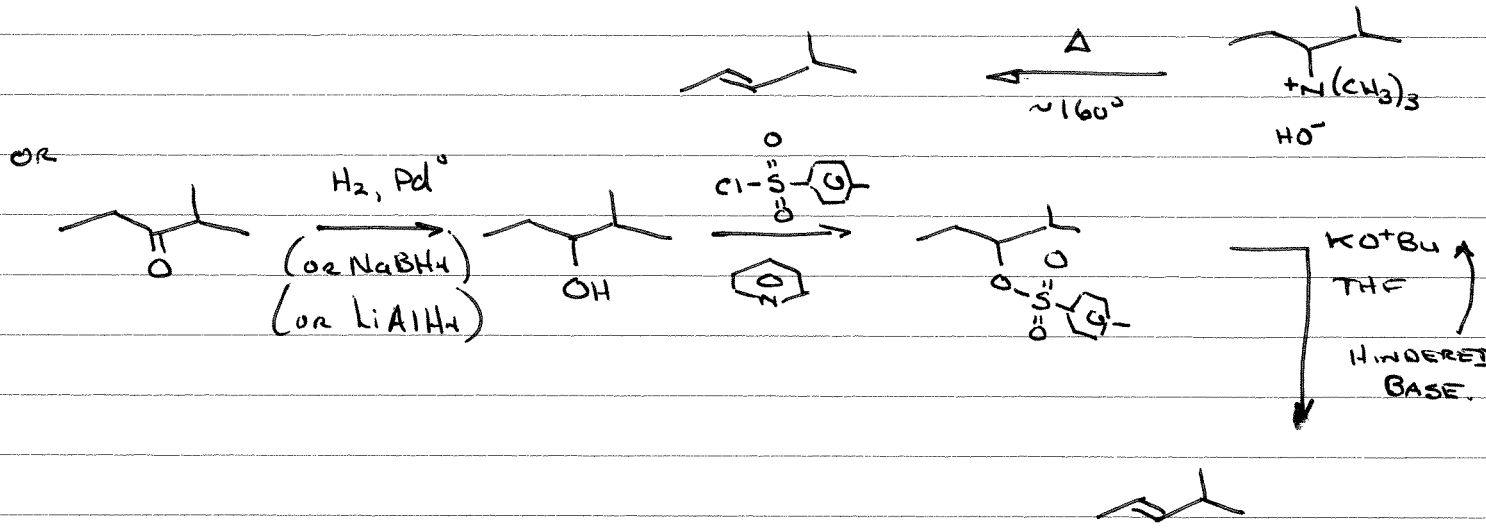
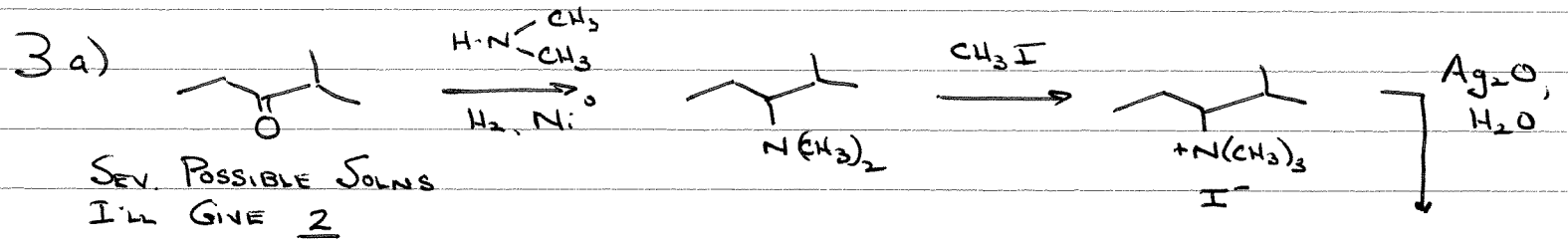
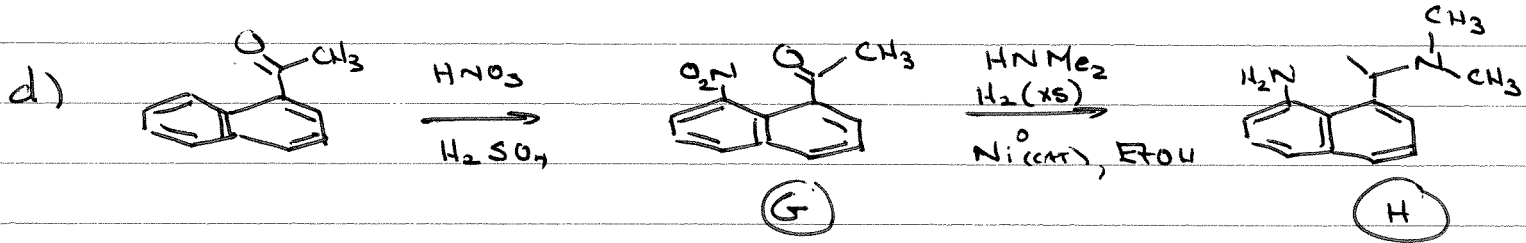
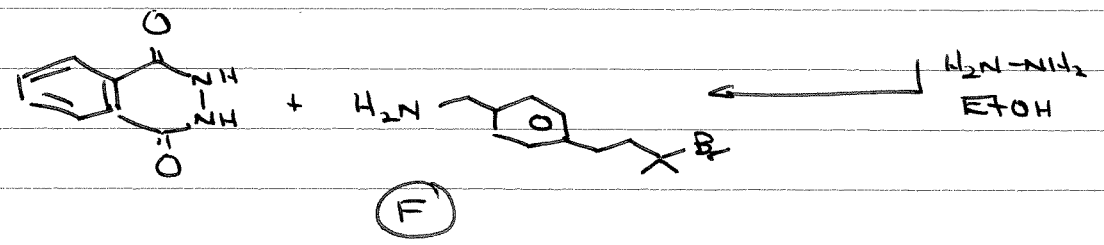
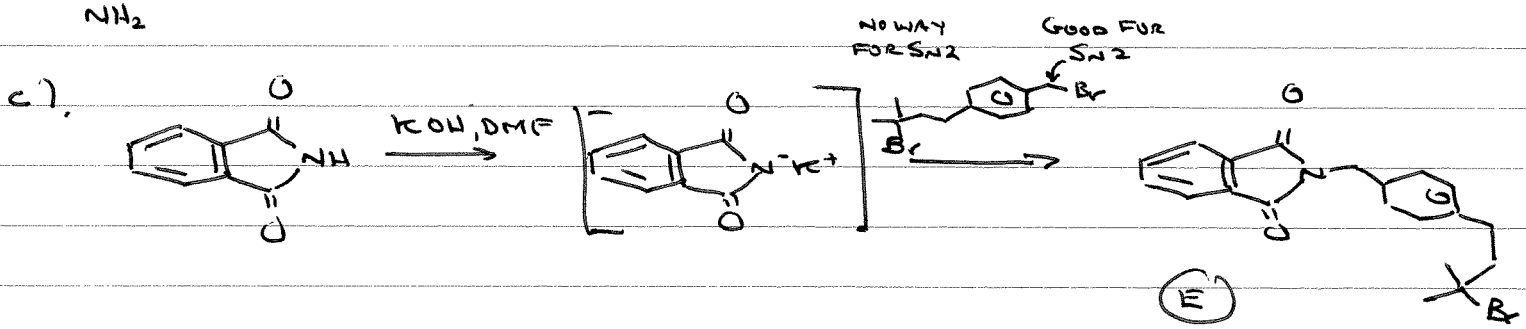
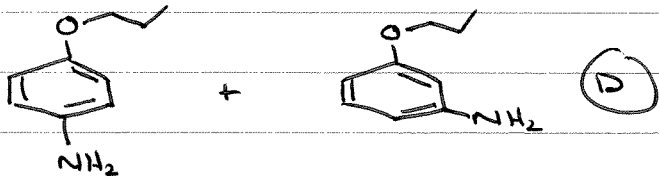


2.a)

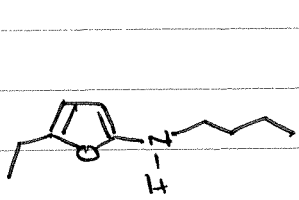
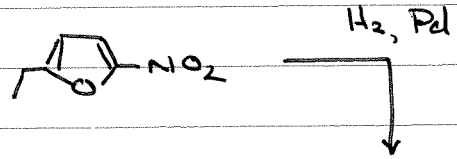
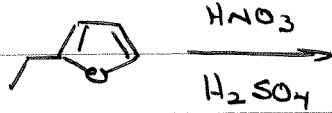
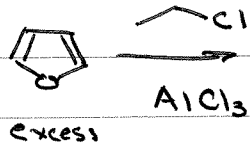


b)



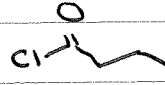
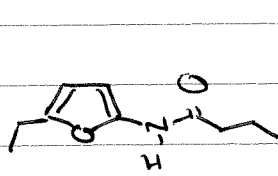


b)



1) LiAlH_4

2) H_2O



OR
1) $\text{Br-CH}_2\text{CH}_2\text{CH}_2\text{CH}_3$
as long as you use excess amino furan
2) $\text{HO}^- (\text{aq})$

