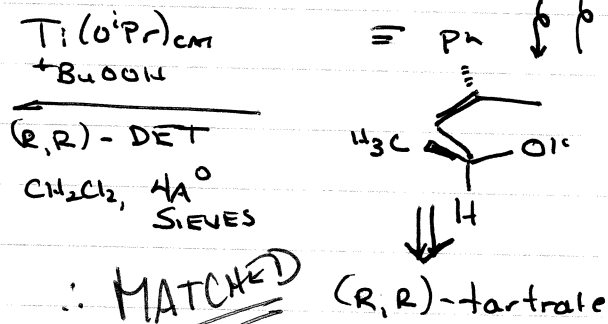
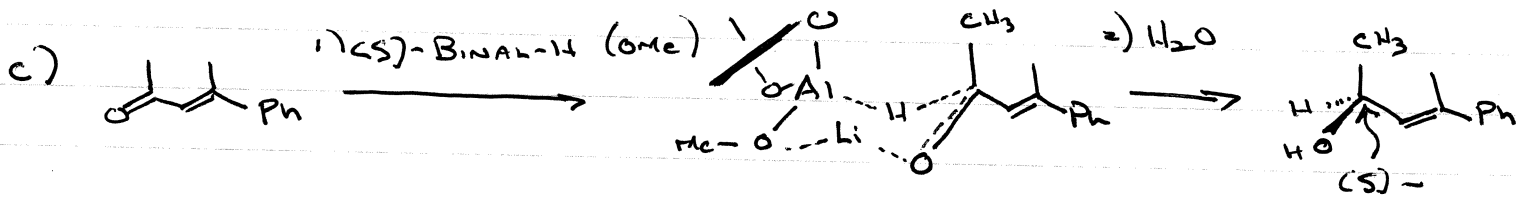
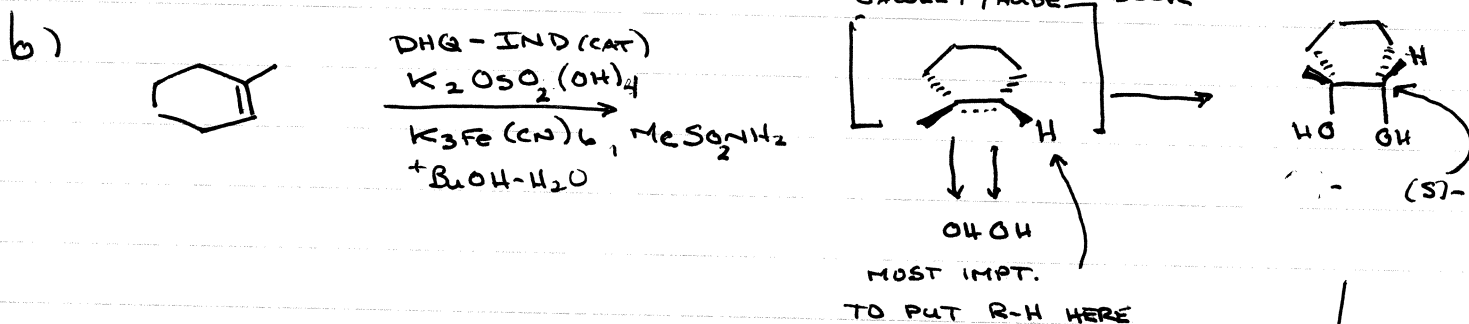
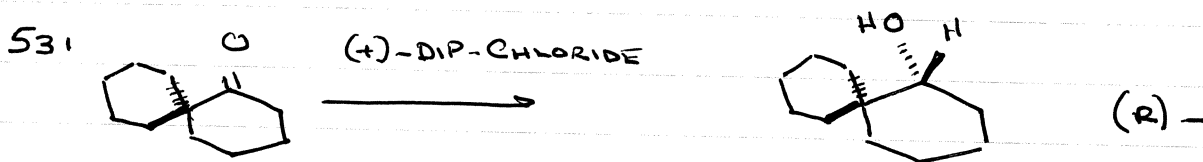
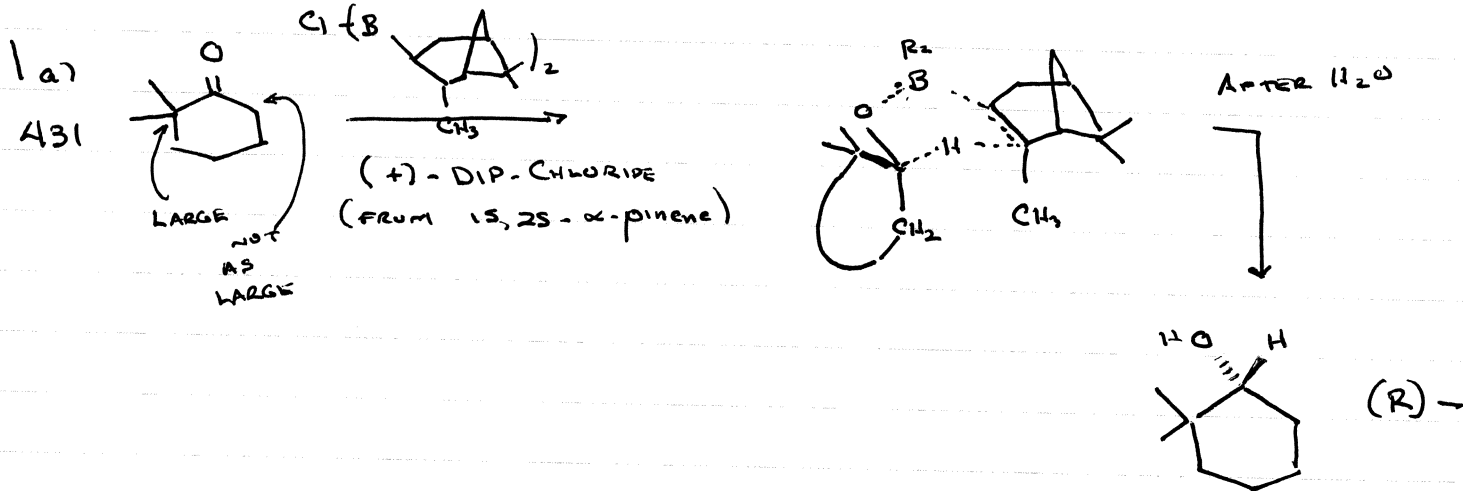
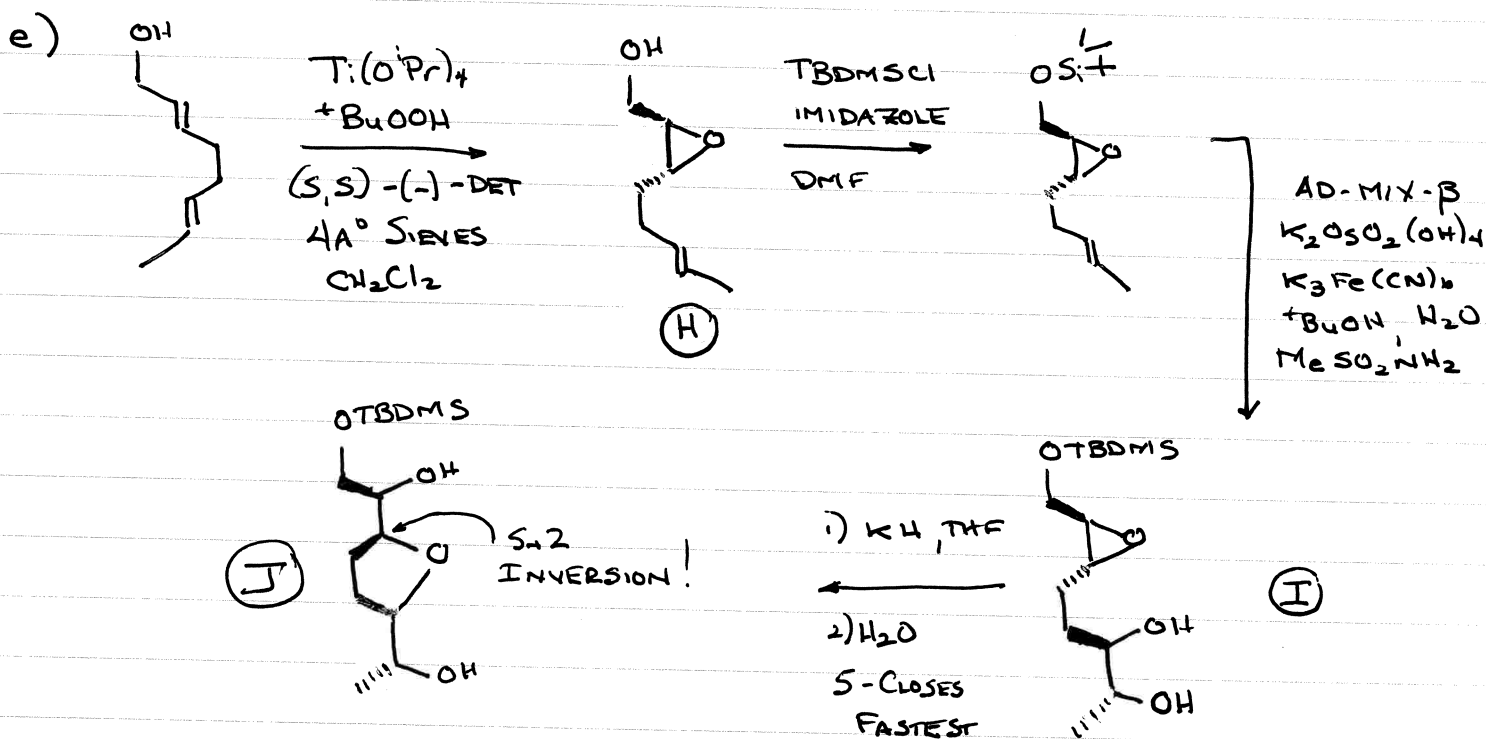
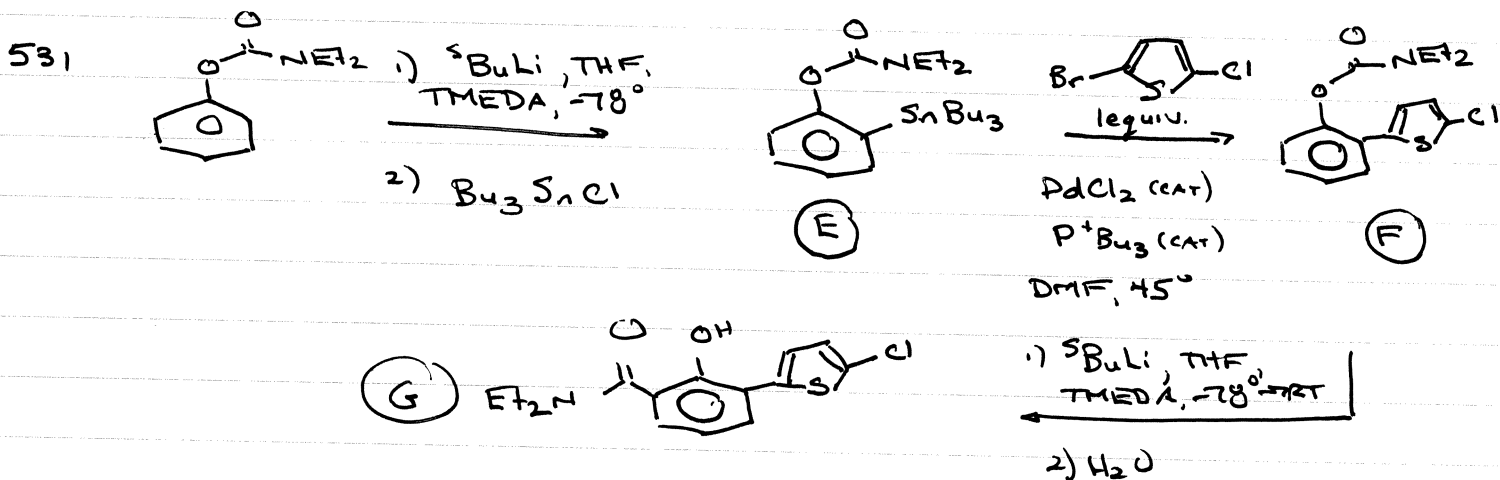
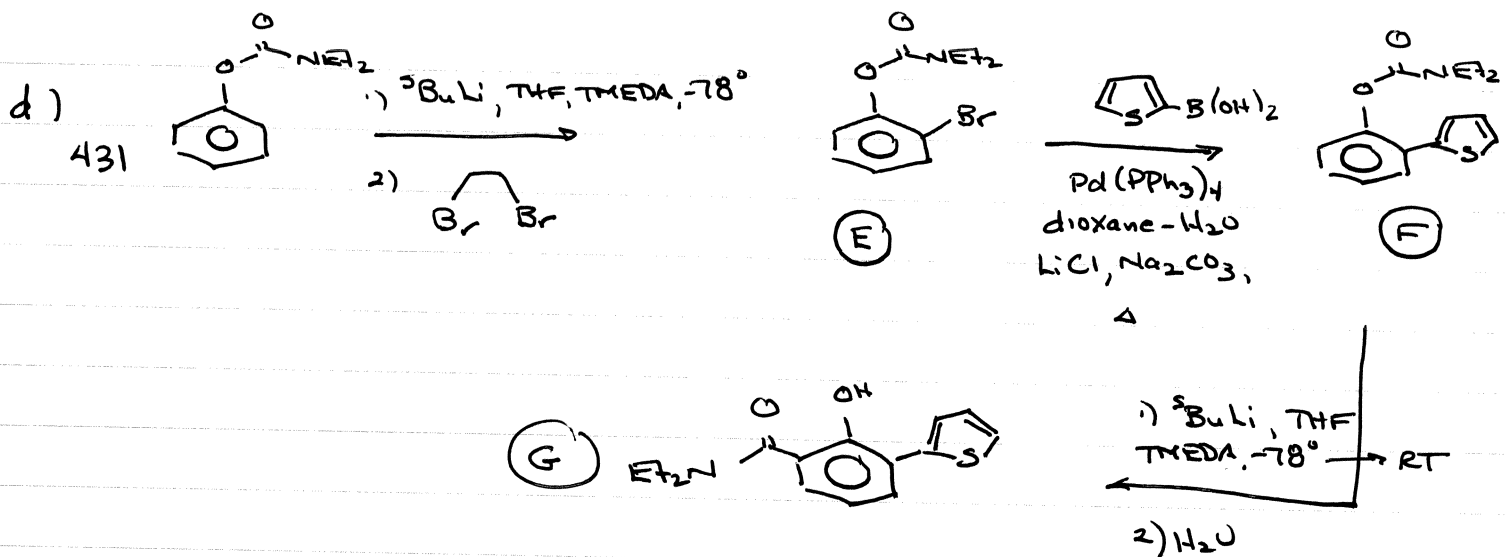


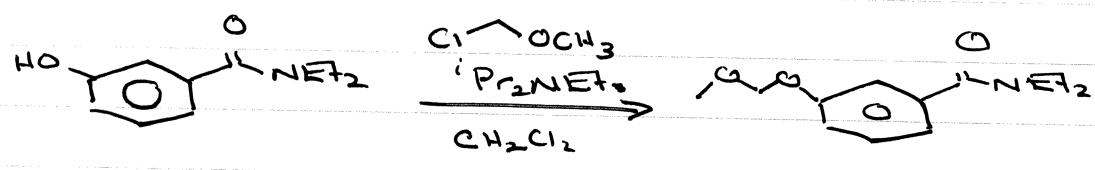
59-431/531
SUGGESTED SOLUTIONS
ASSIGNMENT #2

F'2013

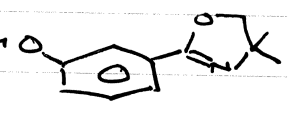




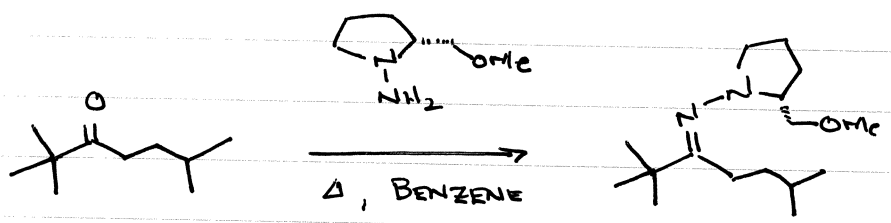
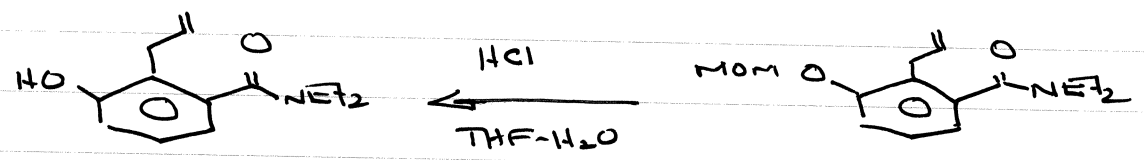
2a)
431



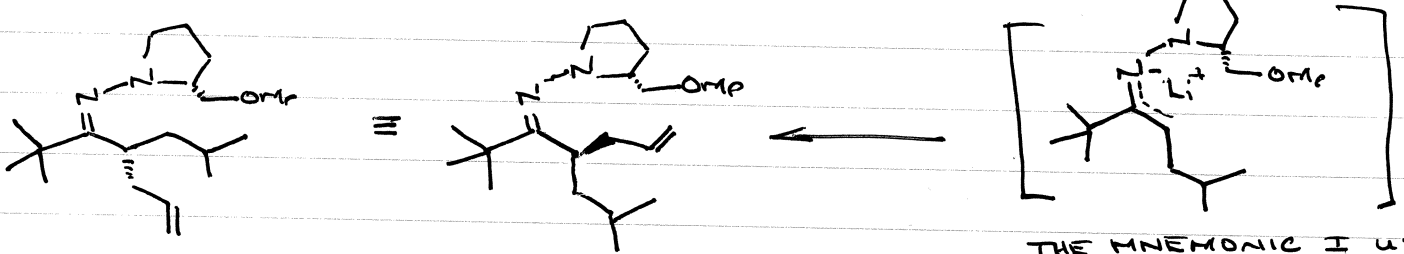
531 EXACTLY ANALOGOUS MOM USING



1) $t\text{BuLi}$,
 TMEDA
 $\text{Et}_2\text{O}, -78^\circ$
 2) $\text{CH}_2=\text{CHBr}$

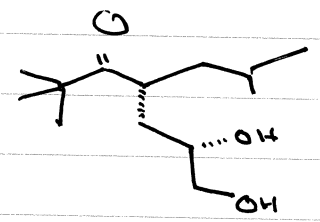
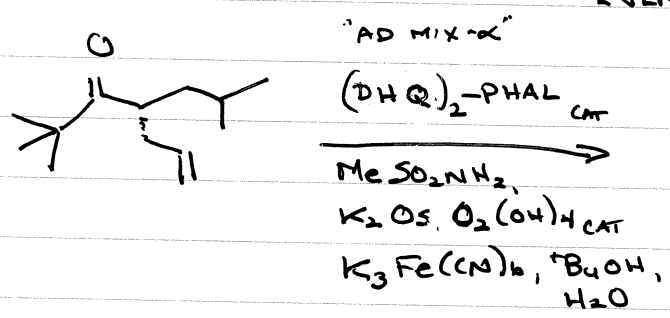


1) LDA, THF, 0°
 2) -78° ; $\text{BrCH}_2\text{CH}=\text{CH}_2$

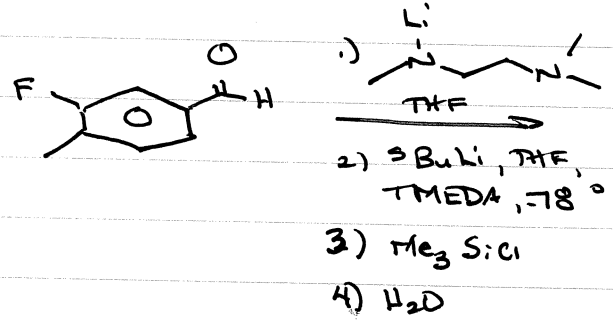


THE MNEMONIC I USE
EVEN THOUGH IT'S NOT
STRICTLY TRUE

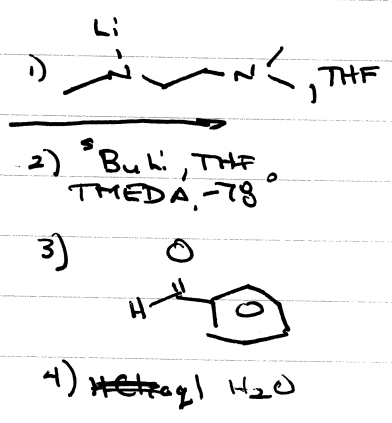
1) MeI
 2) 4M HCl
 1,2,0-pentane

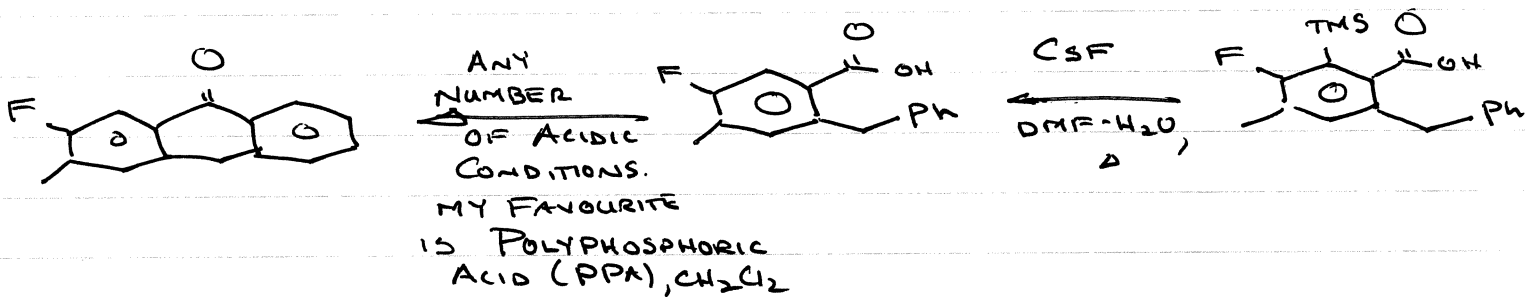
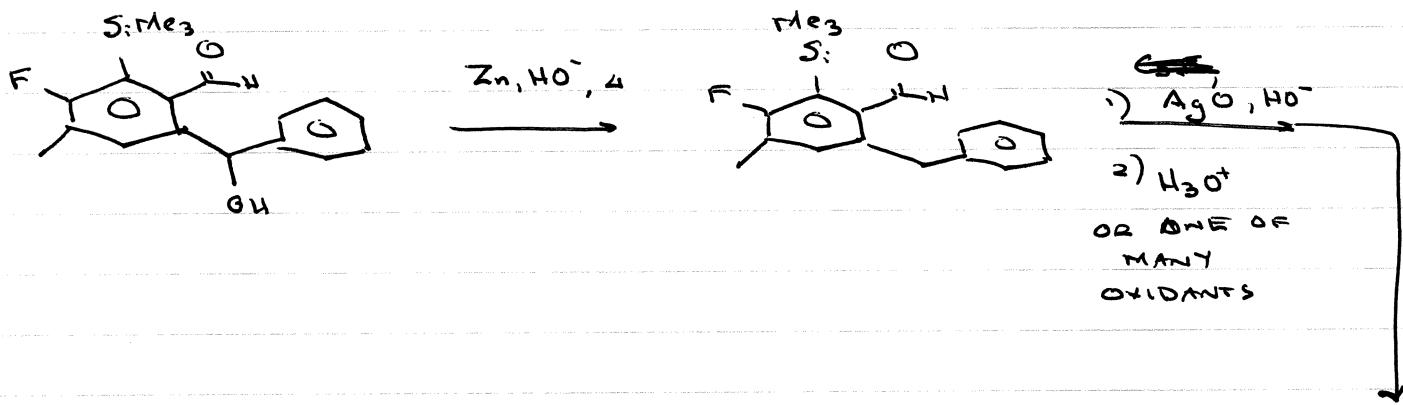


c)
431



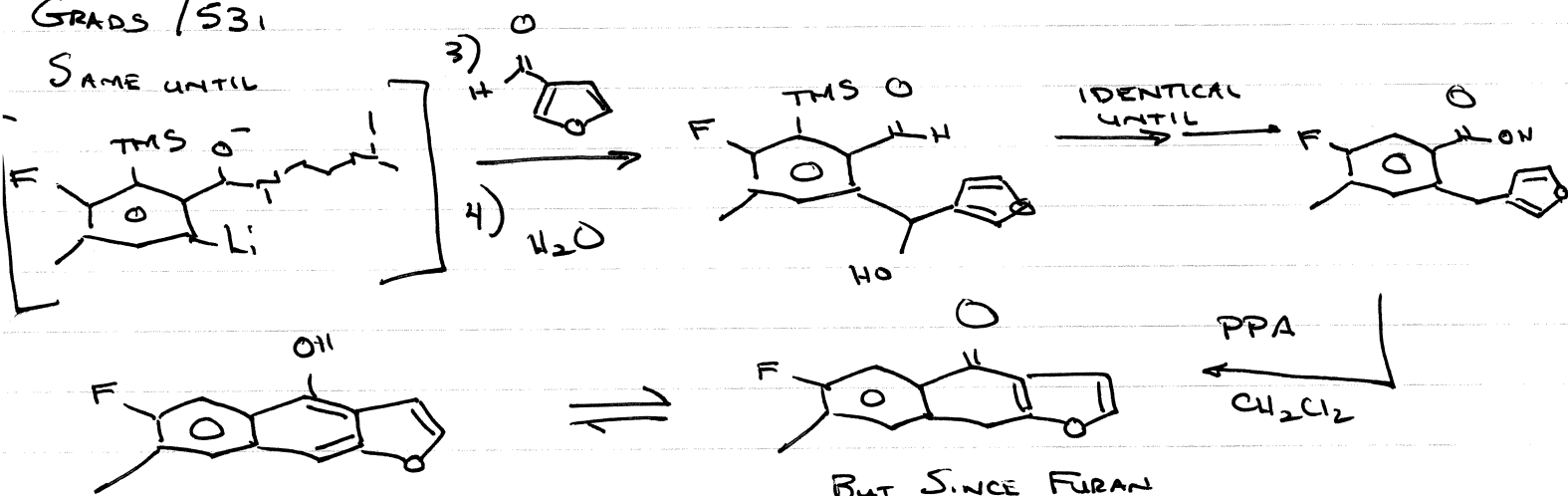
SUCH A WEAK
 GROUP WON'T
 GIVE BENZYLIC
 Li, ACCORDING TO
 A RULE I JUST
 MADE UP





GRADS / S31

SAME UNTIL



BUT SINCE FURAN ISN'T V. AROMATIC