

**University of Windsor  
Senate**

5.10: **Report of the Vice-President, Research and Innovation**

Item for: **Information**

Forwarded by: **Chris Houser**

Research, scholarship, and creative activity are critical to the reputation of the University of Windsor and have a significant influence on our ability to recruit and retain undergraduate and graduate students.

**CANADA RESEARCH CHAIR (CRC) SEARCHES AND NEW STRATEGIC ALLOCATION MODEL**

As previously announced, a new CRC allocation strategy and institutional competition was implemented in Fall 2022. Proposals were due to the OVPRI by December with approval of the Dean of the respective Faculty or Faculties for joint proposals. A total of 29 proposals were received and are being reviewed by the Deans and Executive Leadership.

<b>Title of Proposal</b>	<b>Submitting Faculty</b>
Advanced Protected Agricultural Systems	Engineering
Aquatic Microbial Ecology	Science
Automobility Cybersecurity	Engineering
Black Canada and the Law	Law
Black Health Disparities	FAHSS
Blackness, Criminalization, and Employment	Business
Causal Inference and Data Science	Science
Digital Security and Forensics in Smart Communities	Science
Education, the Public Good and Democracies	Education
Environmental/One Health Genomics	Science
Explainable and Secure Applied Artificial Intelligence	Science
Health Biostatistics	HK
Human Factors in Ergonomics	Engineering
Law Innovation and Society	Law
Local Governance for Healthy	Law
Low-net-carbon Energy Carriers	Engineering

Microelectromechanical Systems and Smart Sensors	Engineering
Movement Ecology and Environmental Health	Science
Neutron Applications in Soft Materials and Health Sciences	Science
Privacy Preserving Machine Learning	Science
Quantum Science and Technology	Science
Radiation Oncology/Radiotherapy	Science
Smart Faculty-Tolerant & Cyber-Resilient Grids for Sustainable Communities	Engineering
Smart Materials for Human-centric Wearable Electronics	Science
Social Implications of Public Health and Clinical Care Integration	FAHSS
Soft Electronic and Energy Materials	Science
Sustainable and Affordable Cities	Engineering
Translational Cancer Research	Science
Trauma-Informed Mentally Healthy Schools & Communities	Education

**REMINDER: PLANNING FOR NEXT CFI ALLOCATION**

The Innovation Fund from the Canada Foundation for Innovation (CFI) is an opportunity for the institution to invest in infrastructure from fundamental research to applied research and technology development. **Deans have been asked to work directly with their Associate Deans of Research and to consult with faculty and aligned research centres and institutes to develop 1-page high-level proposals for use of the future CFI envelope.** In your proposal consider how an invest in new research infrastructure will: 1) enhance research and reputation, 2) support the largest number of faculty across campus, 3) potential to include collaborations and contributions from other institutions (do not contact other institutions at this time), and 4) supports the Windsor-Essex region, Ontario, and Canada. Faculties can submit multiple proposals and cross-Faculty proposals are encouraged. Given that opportunities, inspirations, and needs evolve, proposals and ideas that develop after that deadline will still be accepted on a rolling basis. Please note that the Innovation Fund is different from the CFI-JELF allocation.

**Canada First Research Excellence Fund (CFREF)**

Unfortunately, the University of Windsor was not selected to move forward in the CFREF competition to establish a national centre devoted to automobility and automotive engineering entitled FuturE🍁Car. While it was not successful, the proposal has generated new industry and academic collaborations/partnerships, will provide a strong foundation for new institutional proposals, and we will be contributing to other proposals that were selected to move forward.

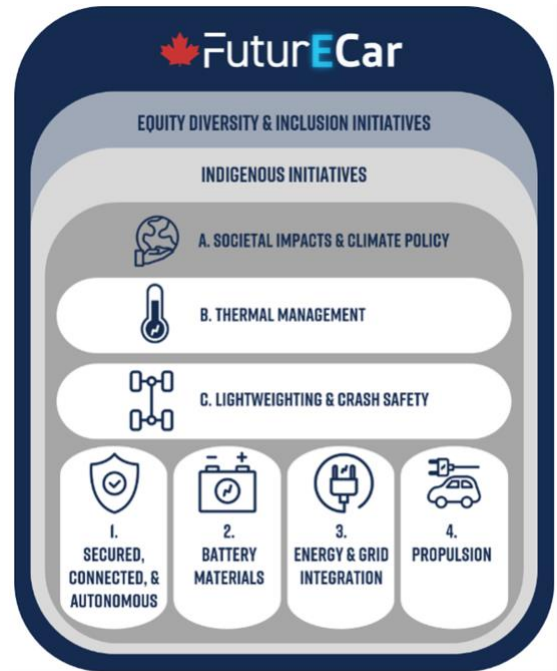


Figure 5: FuturECar program