



BEFORE YOU START

STUDENTS MAY ONLY PRINT IF THEY HAVE PRE-PAID OR HAVE COURSE CREDIT

- ☛ Place receipts in purchase binder
- ☛ Make note of paper quantity & type in purchase binder
- ☛ Ensure computer monitor has been on for at least 30 minutes

PRINTING WITH CS5:

1. Check Size, Margins and Resolution

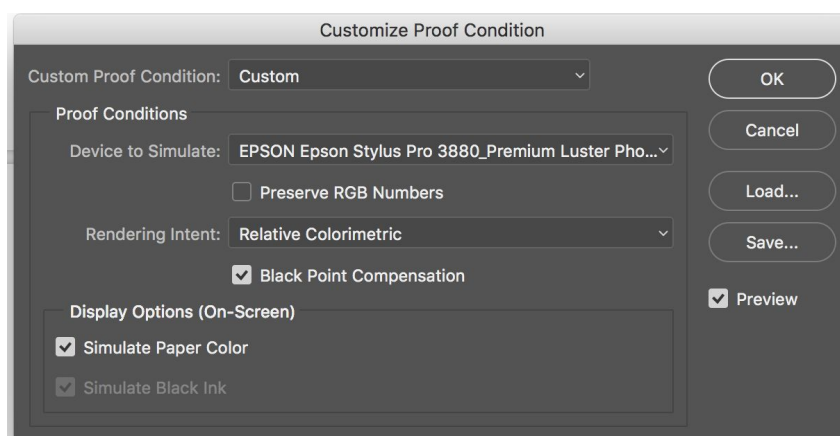
- a. Open Image(s) with Photoshop
- b. If prompted: ALWAYS choose embedded color space
- c. Go to **Image > Image Size**
- d. Check that image size fits on paper size.

2. Choose & Load paper in Printer

- a. Review what papers and sizes are available in the lab
- b. Choose paper type and size
- c. Handle paper with gloves & care – do not dent paper
- d. Write remaining number of sheets on box inventory
- e. Insert paper in printer carefully either in **Manual-Rear** or **Sheet Feeder**

3. Soft-proof Image

- a. Go to **View > Proof Setup** & choose **Custom**
- b. In **Device to Simulate** choose profile depending on paper type:



- Ultra Premium Luster Photo Paper: **Epson_3880_Premium Luster Photo Paper**
- Velvet Fine Art Paper: **Epson_3880_Velvet Fine Art Paper**
- Ultra Premium Presentation Paper Matte: **Epson_3880_Enhanced Paper Matte**

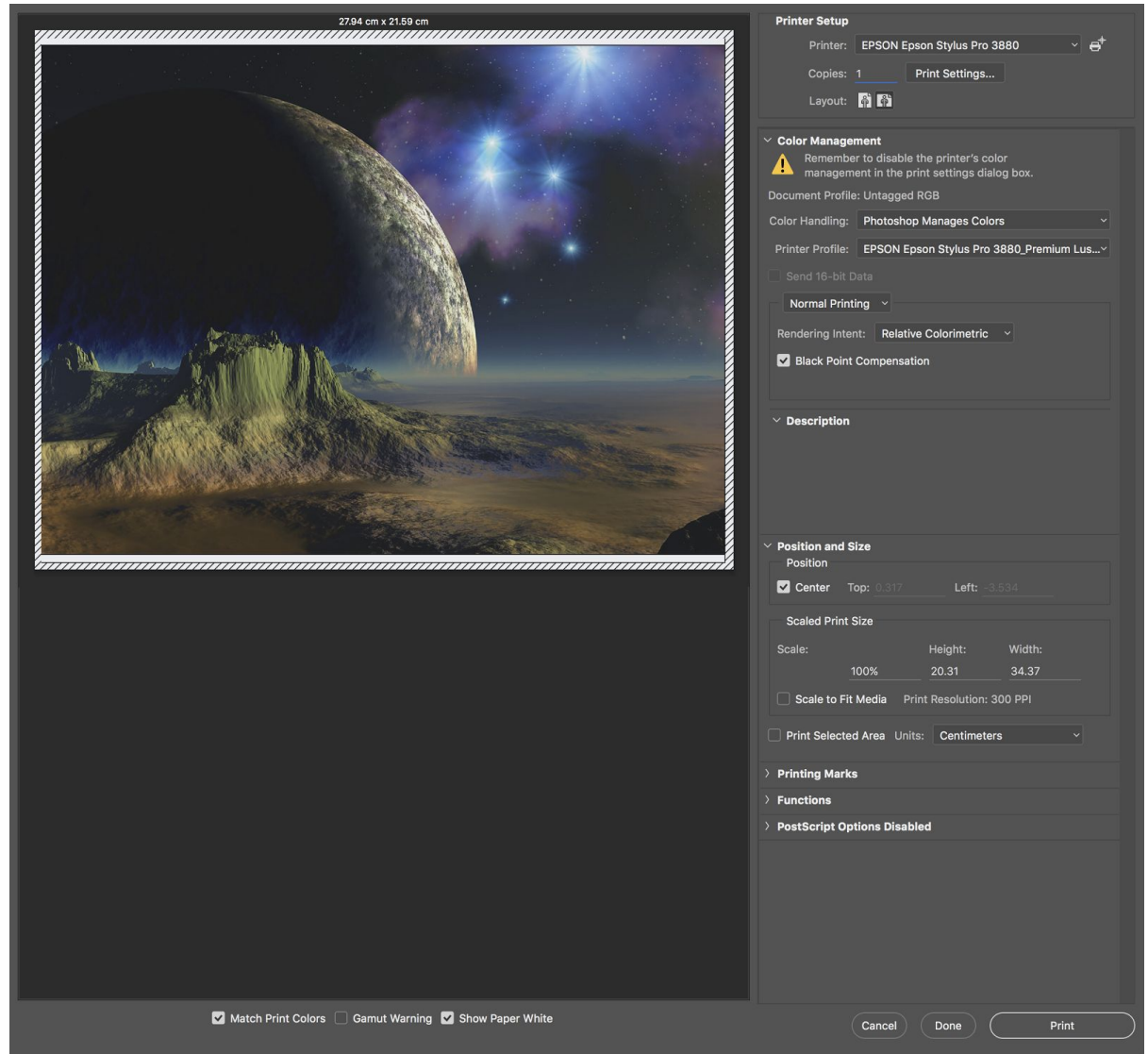
- c. Toggle between **Perceptual** & **Relative Colorimetric** (prefer relative)



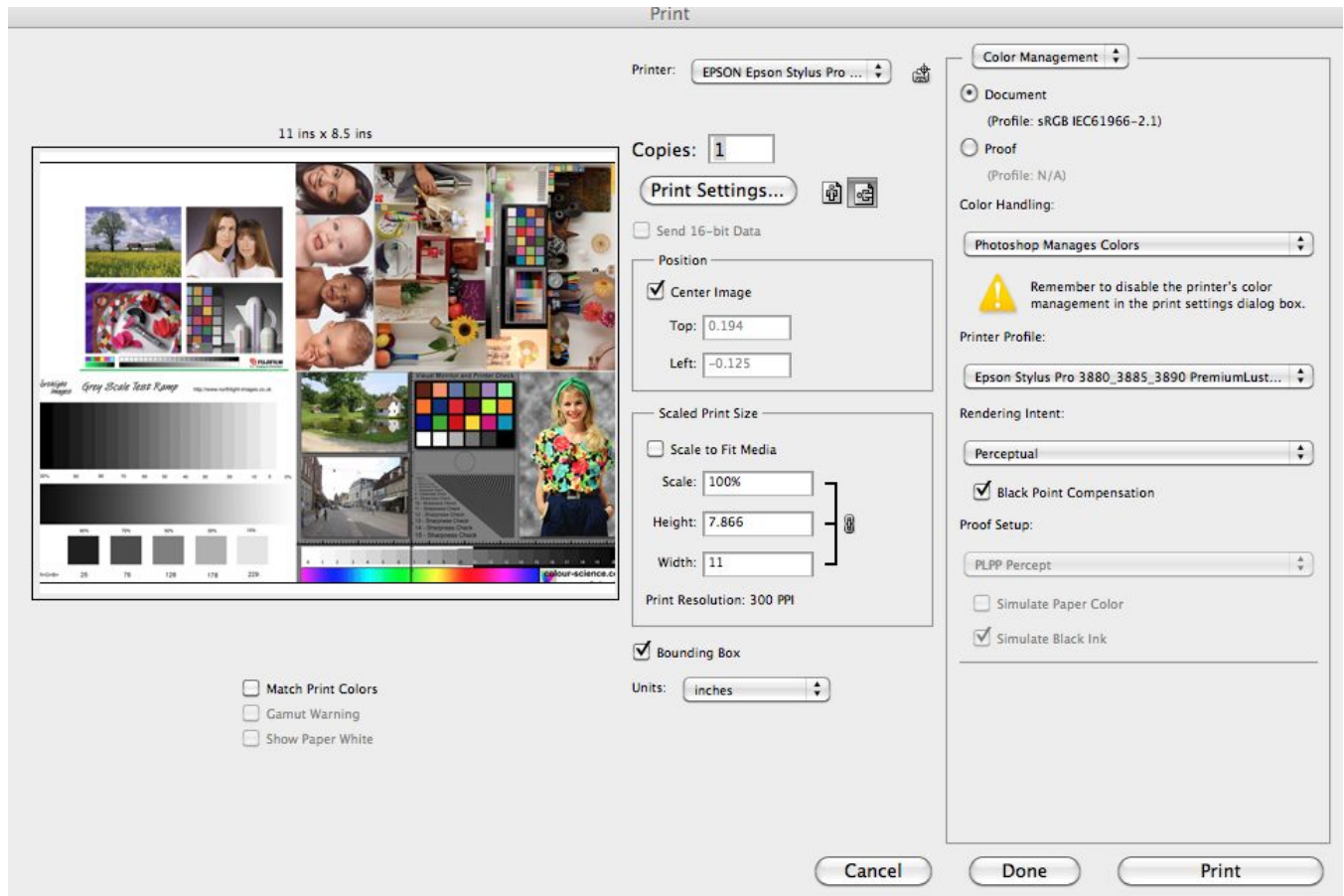
4. **Print Menu: Paper & Printer Settings**

a. Go to **File > Print**

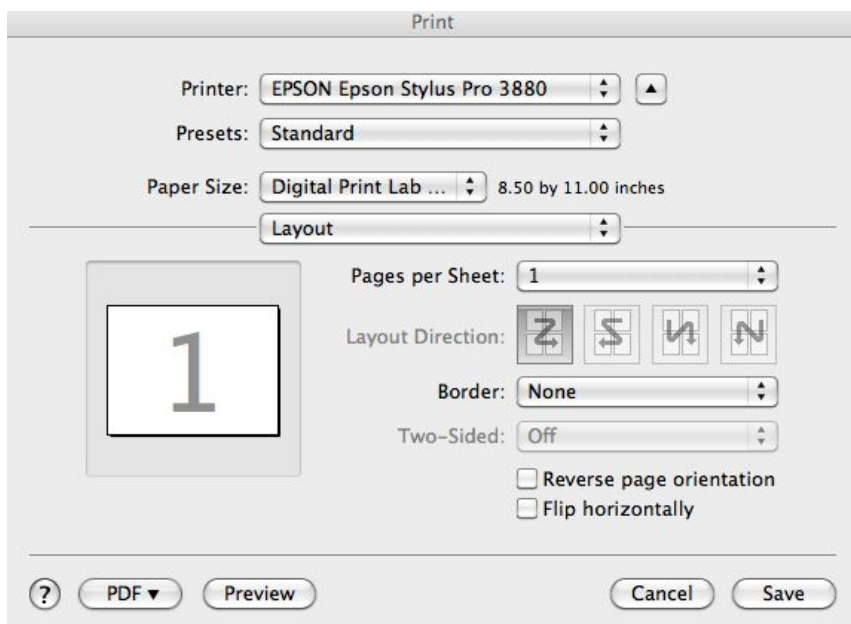
b. Choose Epson 3880 as the printer



c. Click on **Print Settings**

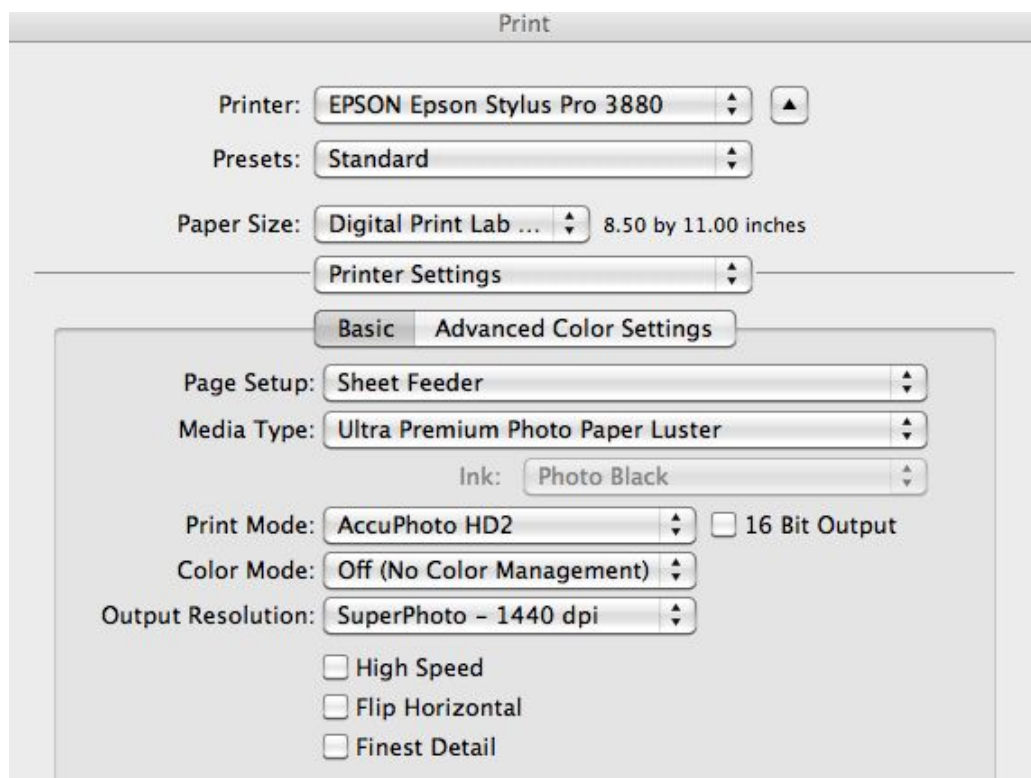


- d. Go to **Paper Size** to set the paper size and choose one of the Digital Print Lab custom sizes – ie. Digital Print Lab 8.5" x 11", etc.
- e. Create custom paper sizes if desired size is not available – set all four margins to 0".



f. Go to **Layout > Printer Settings**

Note: This is basically the second print menu that is on the other computer using CS4





- g. In **Page Setup**: Choose either **Sheet Feeder** or **Manual - Rear**
 - use "**Manual - Rear**" for best results and for printing flat
- h. In **Media Type**: Choose paper type, ie:
 - Ultra Premium Photo Paper Luster
 - Ultra Premium Presentation Paper Matte
 - Velvet Fine Art
- i. In **Color Mode**: Choose **Off (No Color Management)**
- j. Click **16 Bit Output** only if you're printing a 16 Bit image
- k. Choose **SuperPhoto – 1440 dpi**
- l. Deselect **High Speed** for Ultra Premium Photo Paper Luster
- m. When done click **Save**

5. **Print Menu: Color Management**

Back in **Print Menu**:

- a. In **Color Handling** choose "**Photoshop Manages Colors**" **NOT** Printer Manages Colors

The screenshot shows the 'Print' dialog box for an 'EPSON Epson Stylus Pro ...' printer. The 'Color Management' tab is selected. On the left, there are settings for 'Copies' (1), 'Print Settings...', 'Send 16-bit Data' (unchecked), 'Position' (Center Image checked, Top: -0.729, Left: 2.215), 'Scaled Print Size' (Scale to Fit Media unchecked, Scale: 100%, Height: 17.736, Width: 6.999, Print Resolution: 300 PPI), 'Bounding Box' (checked), and 'Units' (inches). On the right, the 'Color Management' section shows 'Document' selected with profile 'sRGB IEC61966-2.1', 'Proof' with profile 'N/A', and 'Color Handling' set to 'Photoshop Manages Colors'. A warning icon states: 'Remember to disable the printer's color management in the print settings dialog box.' Below this, 'Printer Profile' is set to 'Epson Stylus Pro 3880_3885_3890 PremiumLust...', 'Rendering Intent' is 'Perceptual', 'Black Point Compensation' is unchecked, and 'Proof Setup' is 'PLPP Percept' with 'Simulate Paper Color' unchecked and 'Simulate Black Ink' checked. At the bottom are 'Cancel', 'Done', and 'Print' buttons.



- b. In **Printer Profile**: Choose appropriate Epson profile by paper type:
- Ultra Premium Luster Photo Paper: **Epson_3880_Premium Luster Photo Paper**
 - Velvet Fine Art Paper: **Epson_3880_Velvet Fine Art Paper**
 - Ultra Premium Presentation Paper Matte: **Epson_3880_Enhanced Paper Matte**
- c. In **Rendering Intent**: Choose either “**Relative Colorimetric**” or “**Perceptual**” according to soft proofing.

Clicking **Print** will start printer.

6. **Check settings...when Ready**, Click **Print**

Note: Exhibition paper uses the same printer settings as PLPP